



City of Clayton
10 N. Bemiston
Clayton, MO 63105

Public Works Department

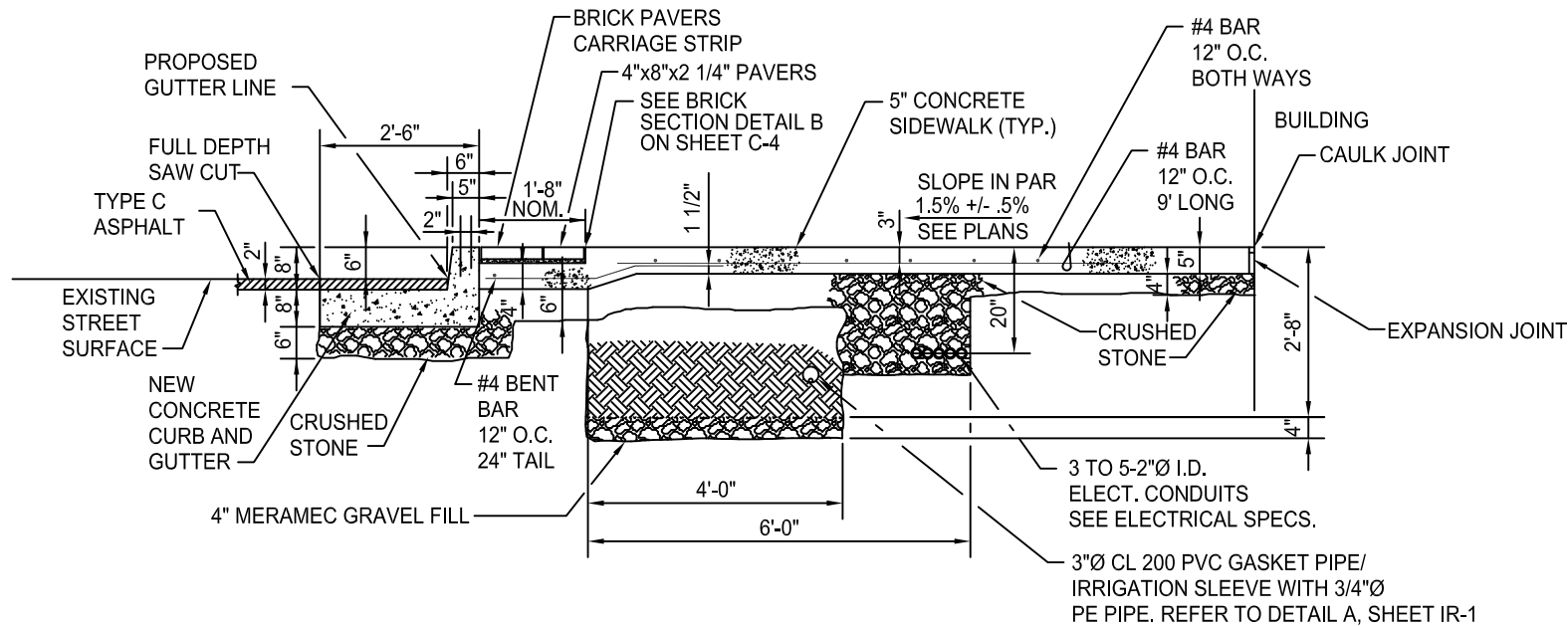
Streetscape
Standard Details

July 2012

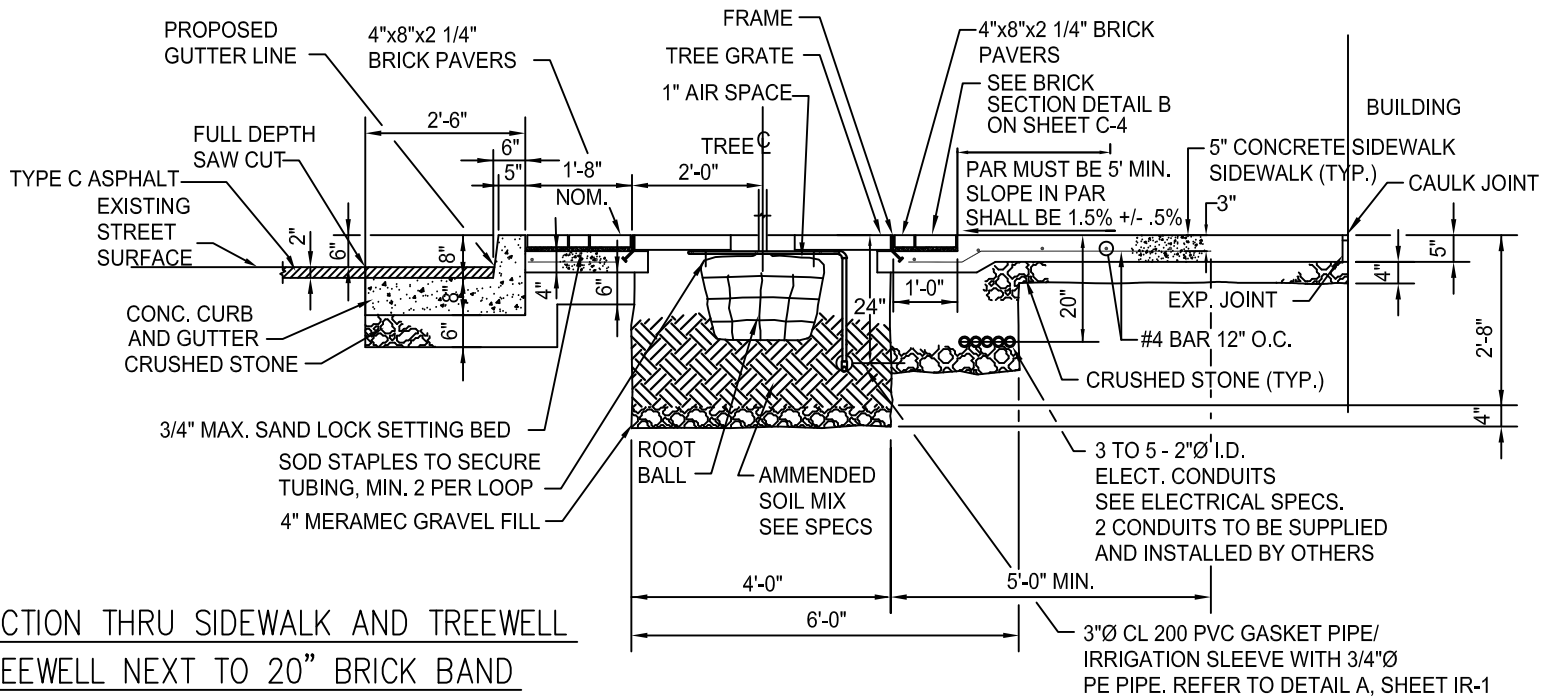
Streetscape Drawing List

- C-1** Section Thru Sidewalk @ Carriage Strip and Tree Trench w/ Pavers – Typ.
Section Thru Sidewalk and Treewell next to 20” Brick Band
- C-2** Section Thru Sidewalk @ Carriage Strip without Tree Trench – Typ.
Section Thru Sidewalk and Treewell in 20” Brick Band
- C-3** Section Thru Sidewalk and Treewell at Curb Pullout
Plan View of Reinforcing Steel at Tree Grates
- C-4** Plan View of Tree Grate Frame
Concrete Tree Grate
Typical Brick Stop Detail
Manhole Isolation Pad
- C-5** Typical Street Section
Plan View of Typical Approach & Alley Entrance
- C-6** Cross Section of Typical Sidewalk @ Approach & Alley Entrance
Typical Approach & Alley Entrance Section
- C-7** ADA Accessible Curb Ramp – Typ.
Truncated Dome Detail
- C-8** Section of ADA Accessible Curb Ramp
- C-9** Sidewalk Detail – 3’x3’, Treewell in 20” Brick Band
- C-10** Sidewalk Detail – 2’x4’, Treewell next to 20” Brick Band
- C-11** Sidewalk Detail – 3’x3’, Treewell next to 20” Brick Band
- C-12** Sidewalk Detail – 2’x4’, Treewell in 20” Brick Band
- C-13** Typical Treewell Detail at Curb Pullout
- C-14** Sidewalk Detail for Trees that Remain
- C-15** 3’x3’ Sidewalk Pattern at Light Base 44” from Back of Curb
2’x4’ Sidewalk Pattern at Light Base 44” from Back of Curb
- C-16** 3’x3’ Sidewalk Pattern at Light Base 24” from Back of Curb
2’x4’ Sidewalk Pattern at Light Base 24” from Back of Curb
- C-17** ADA Sidewalk Detail for Potential A-Frame/Signage Locations
- E-1** Typical Wiring Diagram (Use for Ground Wire “Ground Rod not at Panel”)
Typical Wiring Diagram (Use for no Ground Wire “Ground Rod at Panel”)
- E-2** Cross Section of Light Pole Foundation (Ground Rod at Street Lights)
Cross Section of Light Pole Foundation (Ground Rod is at Panel)
Street Light Foundation Section A
Street Light Foundation Section B
- E-3** Modified Concrete and Steel Street Light Foundation
- E-4** Street Light Pole Base Detail
- E-5** Quad Street Light Plan & Elevation View
Quad Street Light Specifications
- E-6** Twin Street Light Plan & Elevation View
Twin Street Light Specifications
- E-7** Single Street Light Plan & Elevation View
Single Street Light Fixture Specifications
- IR-1** Plan View Drip Irrigation Details @ Treewell
- IR-2** Irrigation Conduit Street Crossing
Lighting Conduit Street Crossing
Electrical Junction Box
- IR-3** Automatic Valve in Conc. Box
Flush Valve in Conc. Box

CENTRAL BUSINESS DISTRICT
STREETSCAPE DETAILS



SECTION THRU SIDEWALK @ CARRIAGE STRIP AND TREE TRENCH W/ PAVERS - TYP.



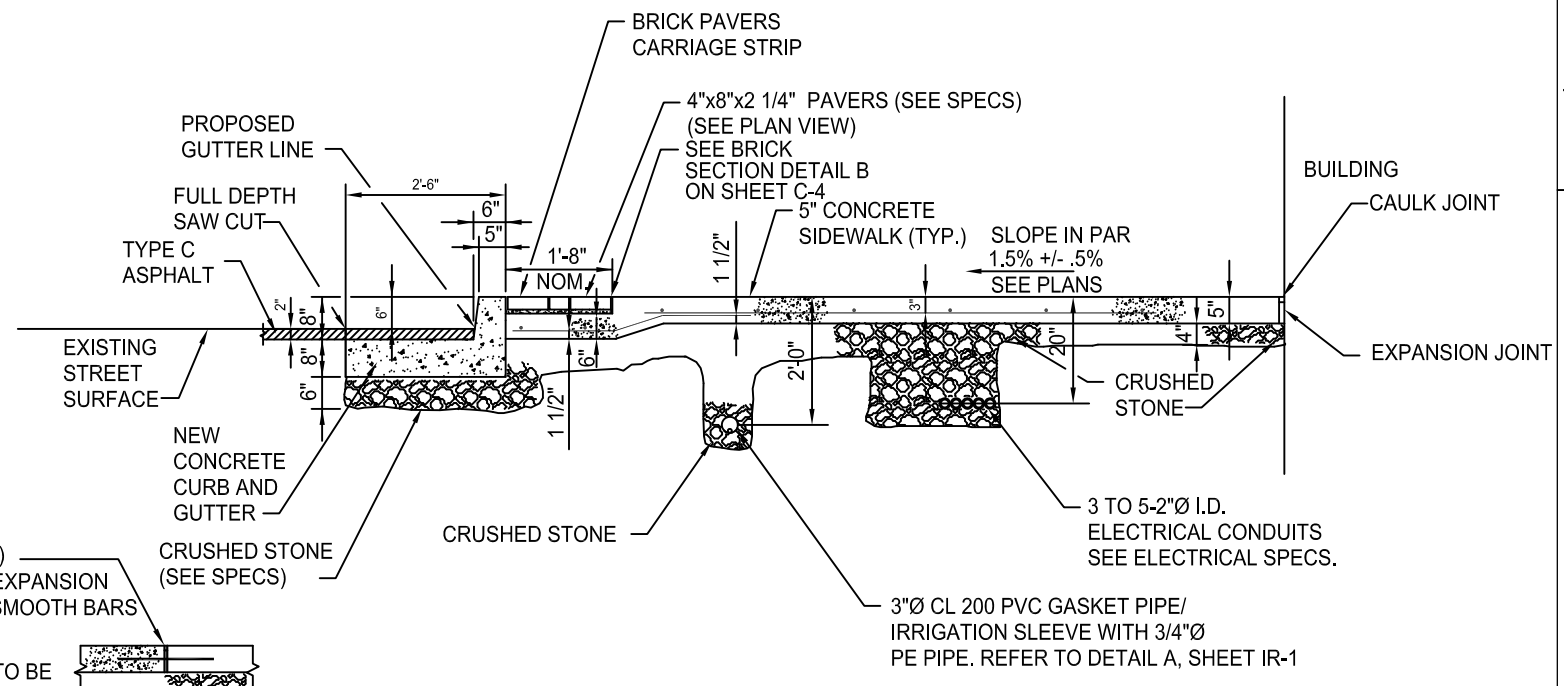
SECTION THRU SIDEWALK AND TREEWELL
TREEWELL NEXT TO 20" BRICK BAND

Revisions	Date	Name
	12/14/2009	STREETSCAPE DRAWINGS
	05/06/2010	STREETSCAPE DRAWINGS
	07/01/2010	STREETSCAPE DRAWINGS
	11/10/2010	STREETSCAPE DRAWING UPDATE
	12/22/2010	STREETSCAPE DRAWING UPDATE
	09/19/2011	STREETSCAPE DRAWING UPDATE
	07/24/2012	STREETSCAPE DRAWING UPDATE

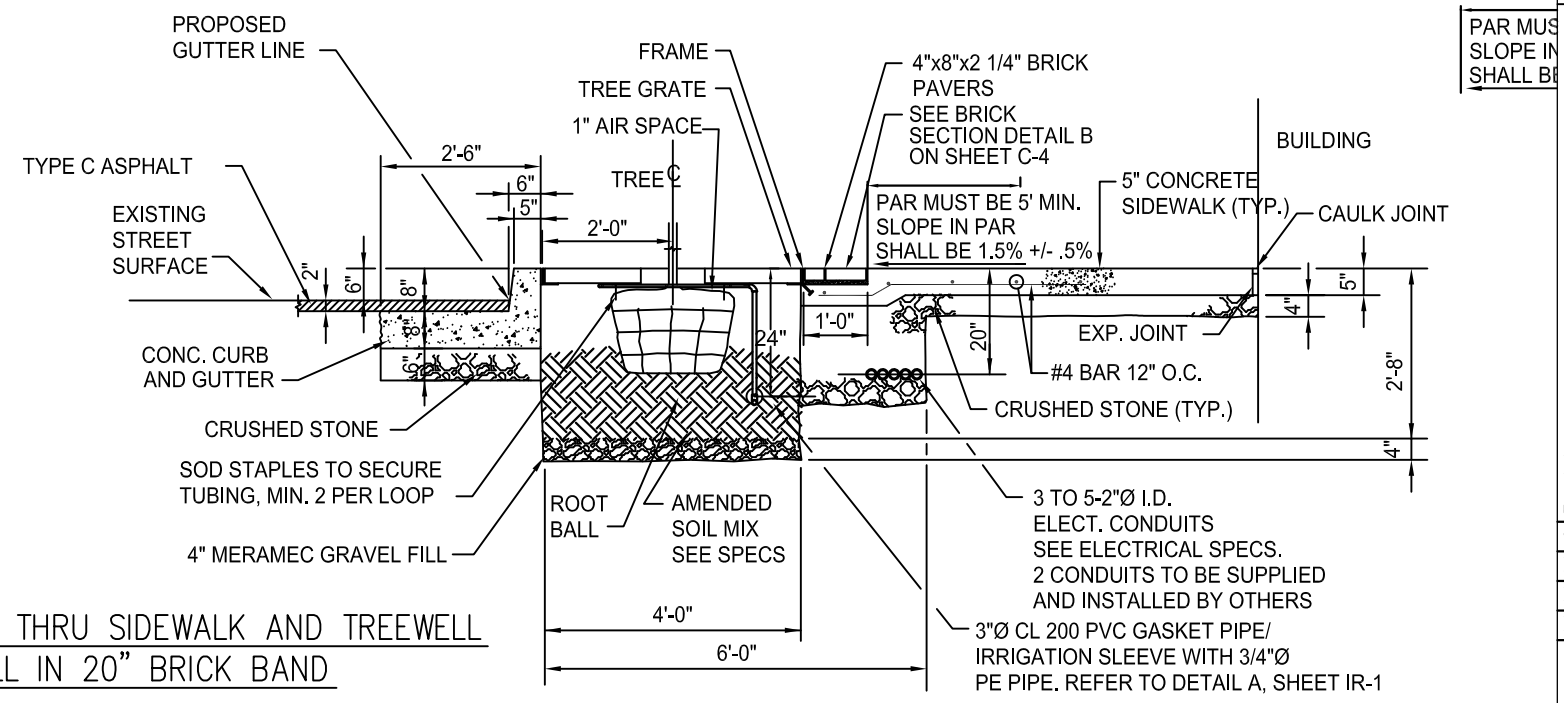
Checked By: JW
 Drawn By: CAK
 Drawing Scale: 1"=3'
 Drawing Number:



CENTRAL BUSINESS DISTRICT
STREETSCAPE DETAILS



SECTION THRU SIDEWALK @ CARRIAGE STRIP WITHOUT TREE TRENCH - TYP.



SECTION THRU SIDEWALK AND TREEWELL
TREEWELL IN 20" BRICK BAND

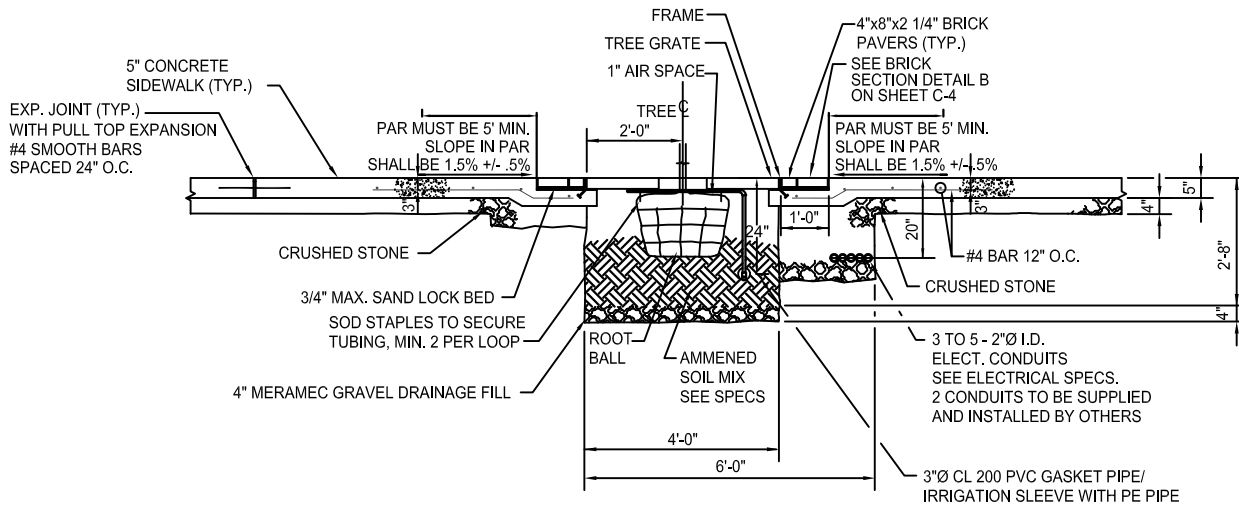
PAR MUST BE 5' MIN. SLOPE IN PAR SHALL BE 1.5% +/- .5%

Revisions	Date	Name
	12/14/2009	STREETSCAPE DRAWINGS
	05/06/2010	STREETSCAPE DRAWINGS
	07/01/2010	STREETSCAPE DRAWINGS
	11/10/2010	STREETSCAPE DRAWING UPDATE
	12/22/2010	STREETSCAPE DRAWING UPDATE
	09/19/2011	STREETSCAPE DRAWING UPDATE
	07/24/2012	STREETSCAPE DRAWING UPDATE

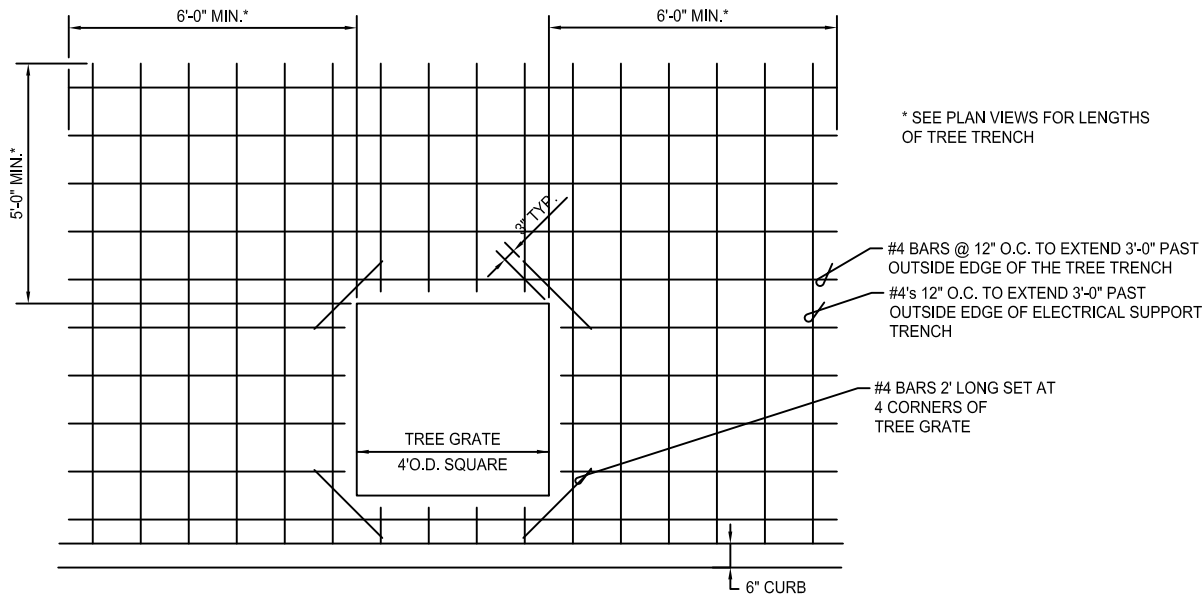
Checked By: JW
 Drawn By: CAK
 Drawing Scale: 1"=3'
 Drawing Number:

C-2

CENTRAL BUSINESS DISTRICT
STREETSCAPE DETAILS



SECTION THRU SIDEWALK AND TREETWELL AT CURB PULLOUT



PLAN VIEW OF REINFORCING STEEL AT TREE GRATES

Revisions	Date	Name
	12/14/2009	STREETSCAPE DRAWINGS
	05/06/2010	STREETSCAPE DRAWINGS
	07/01/2010	STREETSCAPE DRAWINGS
	11/10/2010	STREETSCAPE DRAWING UPDATE
	12/22/2010	STREETSCAPE DRAWING UPDATE
	09/19/2011	STREETSCAPE DRAWING UPDATE
	07/24/2012	STREETSCAPE DRAWING UPDATE

Checked By: JW

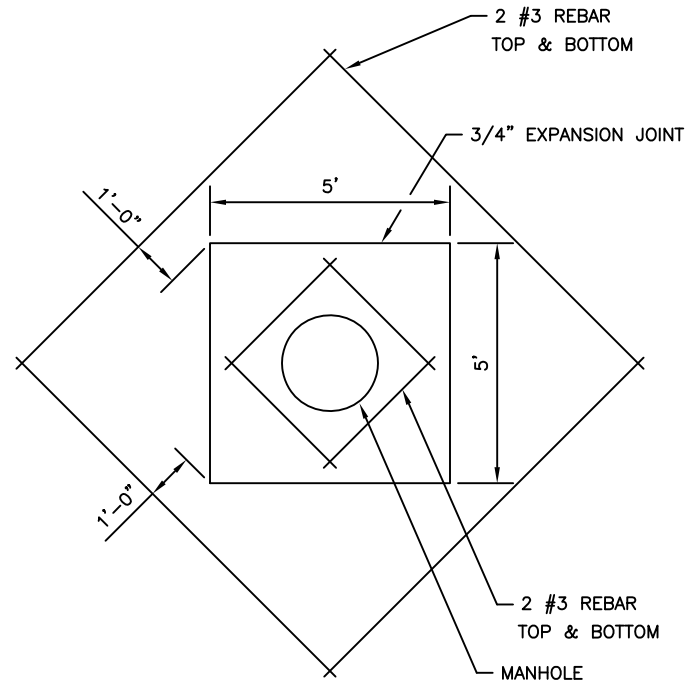
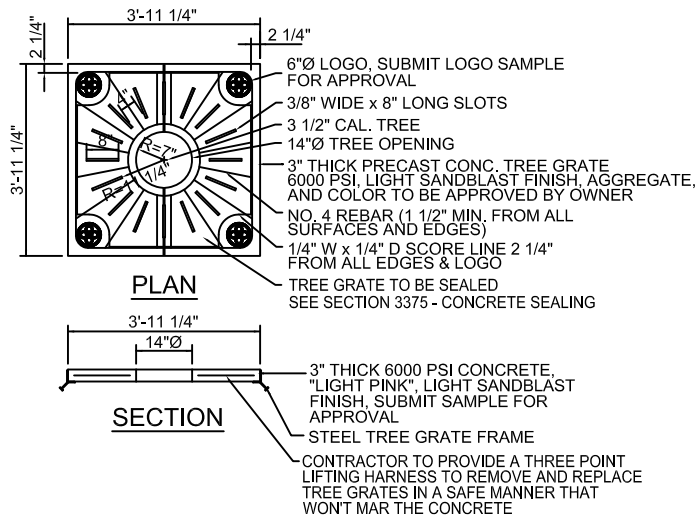
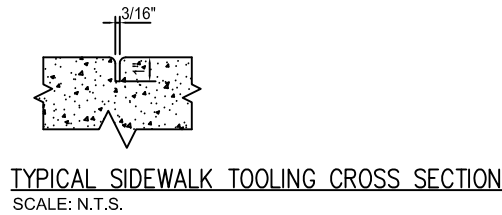
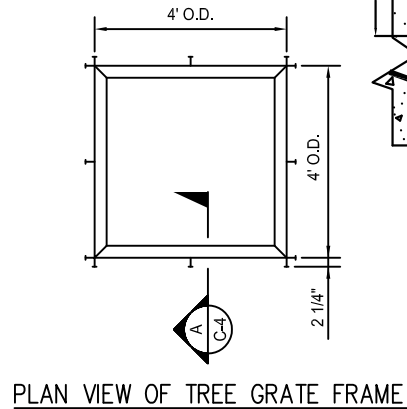
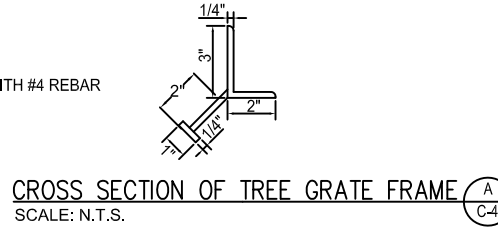
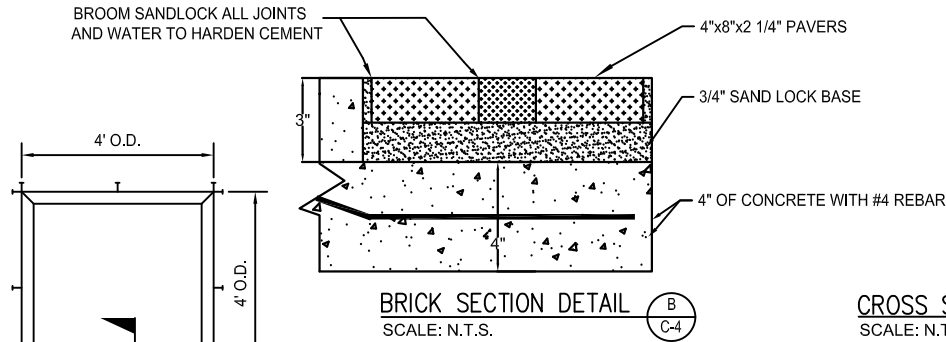
Drawn By: CAK

Drawing Scale: 1"=3'

Drawing Number:

C-3

CENTRAL BUSINESS DISTRICT
STREETSCAPE DETAILS



Revisions	Date	Name
	12/14/2009	STREETSCAPE DRAWINGS
	05/06/2010	STREETSCAPE DRAWINGS
	07/01/2010	STREETSCAPE DRAWINGS
	11/10/2010	STREETSCAPE DRAWING UPDATE
	12/22/2010	STREETSCAPE DRAWING UPDATE
	09/19/2011	STREETSCAPE DRAWING UPDATE
	07/24/2012	STREETSCAPE DRAWING UPDATE

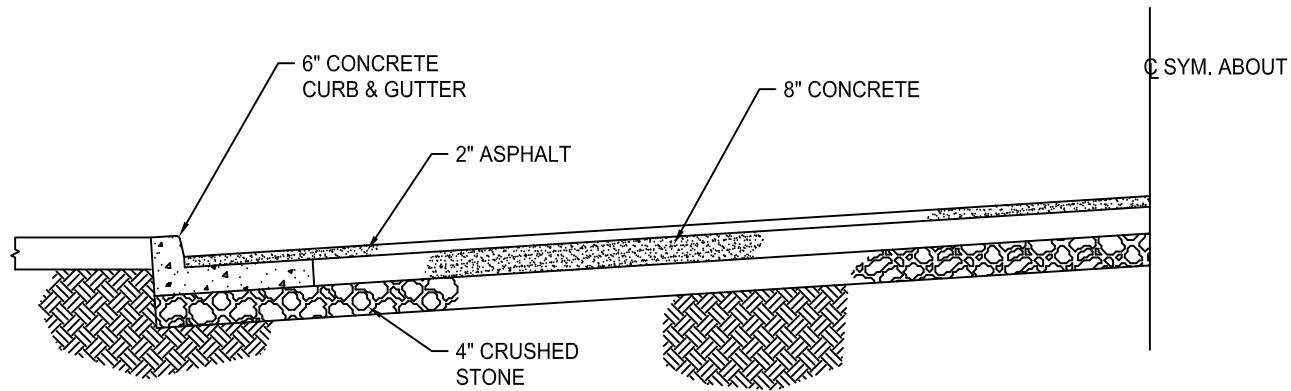
Checked By: JW
 Drawn By: CAK
 Drawing Scale: 1"=4'
 Drawing Number:

DOWNTOWN CLAYTON
STREETSCAPE DETAILS

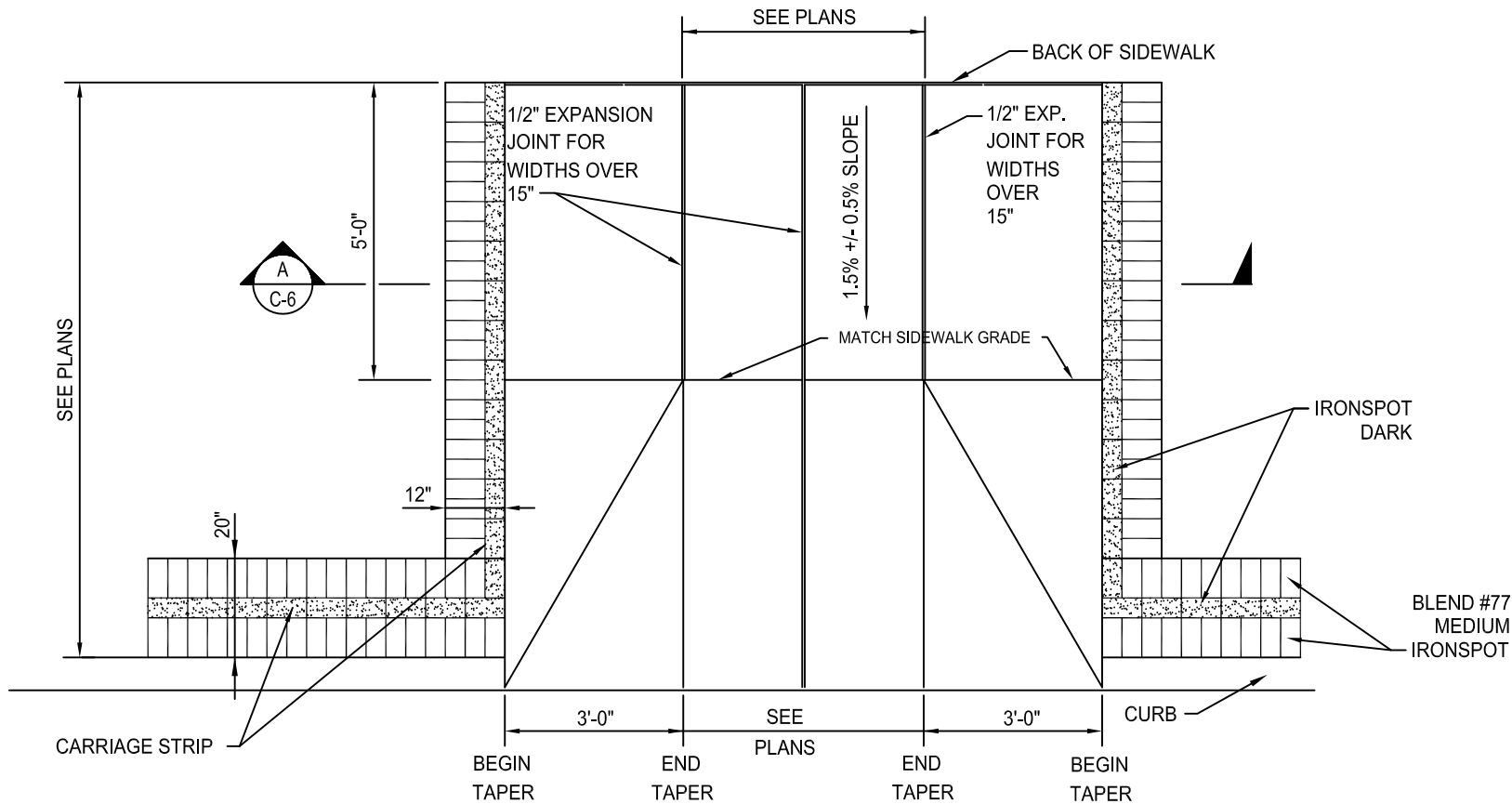
Revisions	Date	Name
	09/19/2011	STREETSCAPE DRAWING UPDATE
	07/24/2012	STREETSCAPE DRAWING UPDATE
	08/09/2013	STREETSCAPE DRAWING UPDATE
	03/18/2014	MEDIUM IRONSPOT BLEND #77

Checked By: JW
 Drawn By: CAK
 Drawing Scale: 1"=3'
 Drawing Number:

C-5

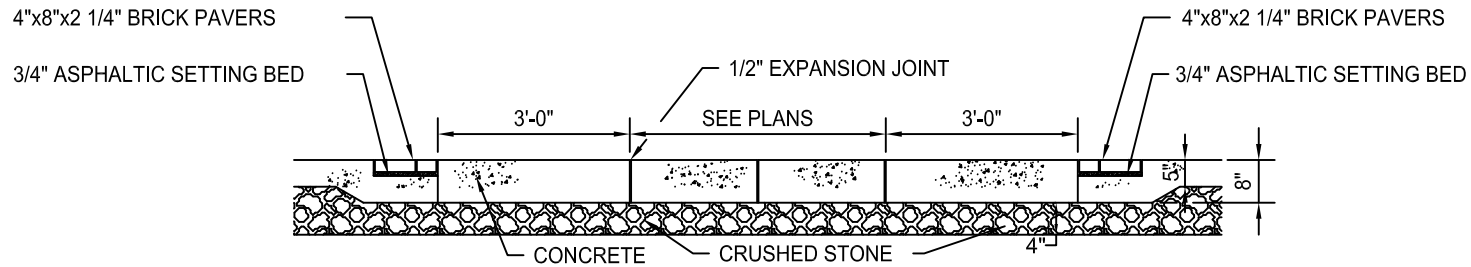


TYPICAL STREET SECTION
SCALE: N.T.S.



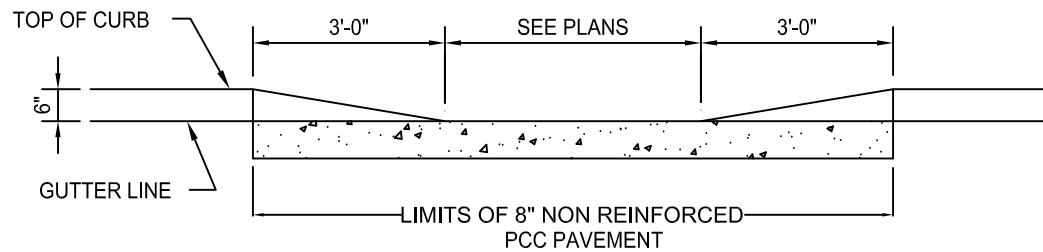
PLAN VIEW OF TYPICAL APPROACH & ALLEY ENTRANCE

CENTRAL BUSINESS DISTRICT
STREETSCAPE DETAILS

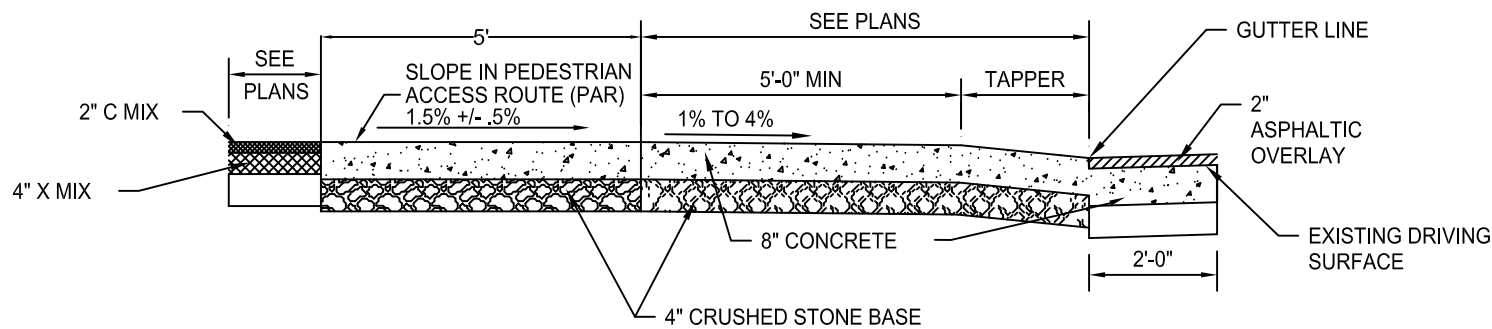


CROSS SECTION OF TYPICAL SIDEWALK @ APPROACH & ALLEY ENTRANCE

A
C-6



ELEVATION



TYPICAL APPROACH & ALLEY ENTRANCE SECTION

Revisions	Date	Name
	12/14/2009	STREETSCAPE DRAWINGS
	05/06/2010	STREETSCAPE DRAWINGS
	07/01/2010	STREETSCAPE DRAWINGS
	11/10/2010	STREETSCAPE DRAWING UPDATE
	12/22/2010	STREETSCAPE DRAWING UPDATE
	09/19/2011	STREETSCAPE DRAWING UPDATE
	07/24/2012	STREETSCAPE DRAWING UPDATE

Checked By: JW

Drawn By: CAK

Drawing Scale: 1"=3'

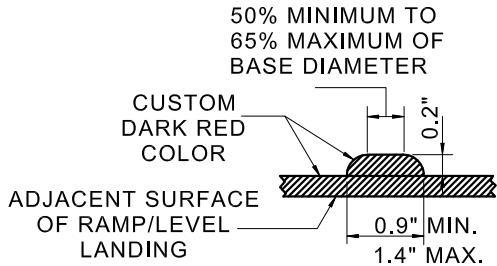
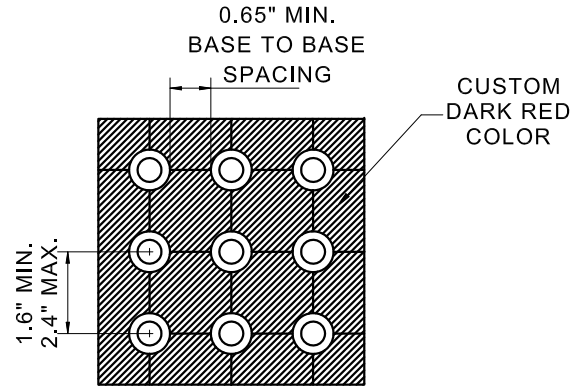
Drawing Number:

C-6

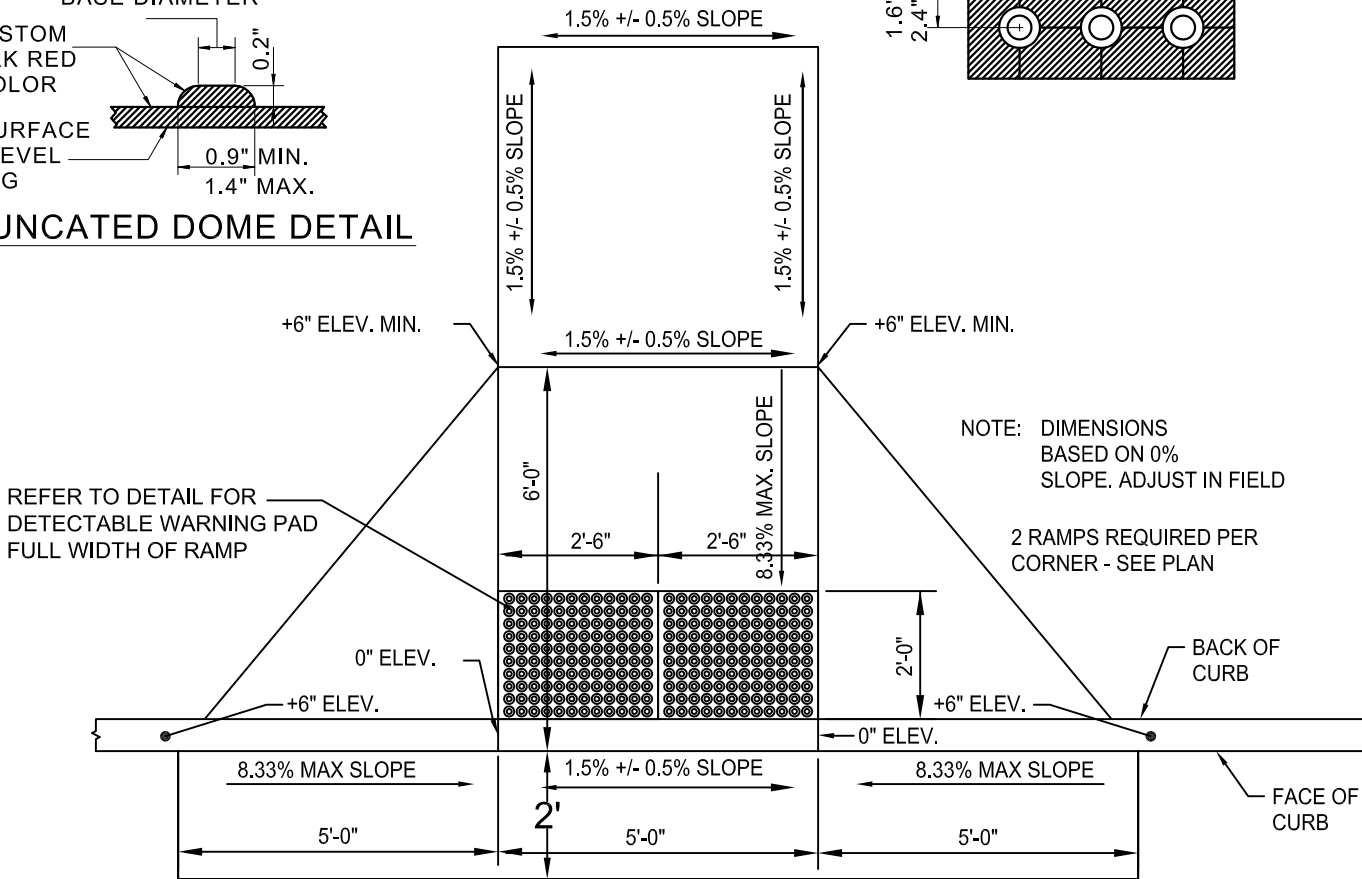
GENERAL NOTES

- 1) DO NOT SCALE DRAWINGS, FOLLOW DIMENSIONS.
- 2) THE SYSTEM SHALL BE DESIGN TO MEET ACCESSIBILITY GUIDELINES FOR AMERICAN DISABILITIES ACT FOR DETECTABLE WARNING (PARAGRAPH 4.29) AND LOADING RAMP (PARAGRAPH 4.7).
- 3) THE SYSTEM SHALL BE DARK RED ADA ARCIS TACTILE DETECTABLE WARNING PANELS. FOLLOW MANUFACTURER'S INSTALLATION INSTRUCTIONS.
- 4) SIDE FLARES OF CURB RAMP, IN THE PATH OF PEDESTRIAN TRAVEL SHALL NOT EXCEED A SLOPE OF 10H:1V. SIDE FLARES OUTSIDE THE PEDESTRIAN PATH MAY BE 2H:1V OR VERTICAL.

SQUARE PATTERN, PARALLEL ALIGNMENT



TRUNCATED DOME DETAIL



NOTE: DIMENSIONS BASED ON 0% SLOPE. ADJUST IN FIELD

2 RAMPS REQUIRED PER CORNER - SEE PLAN

Full Depth Saw Cut

PLAN ADA ACCESSIBLE CURB RAMP - TYP.



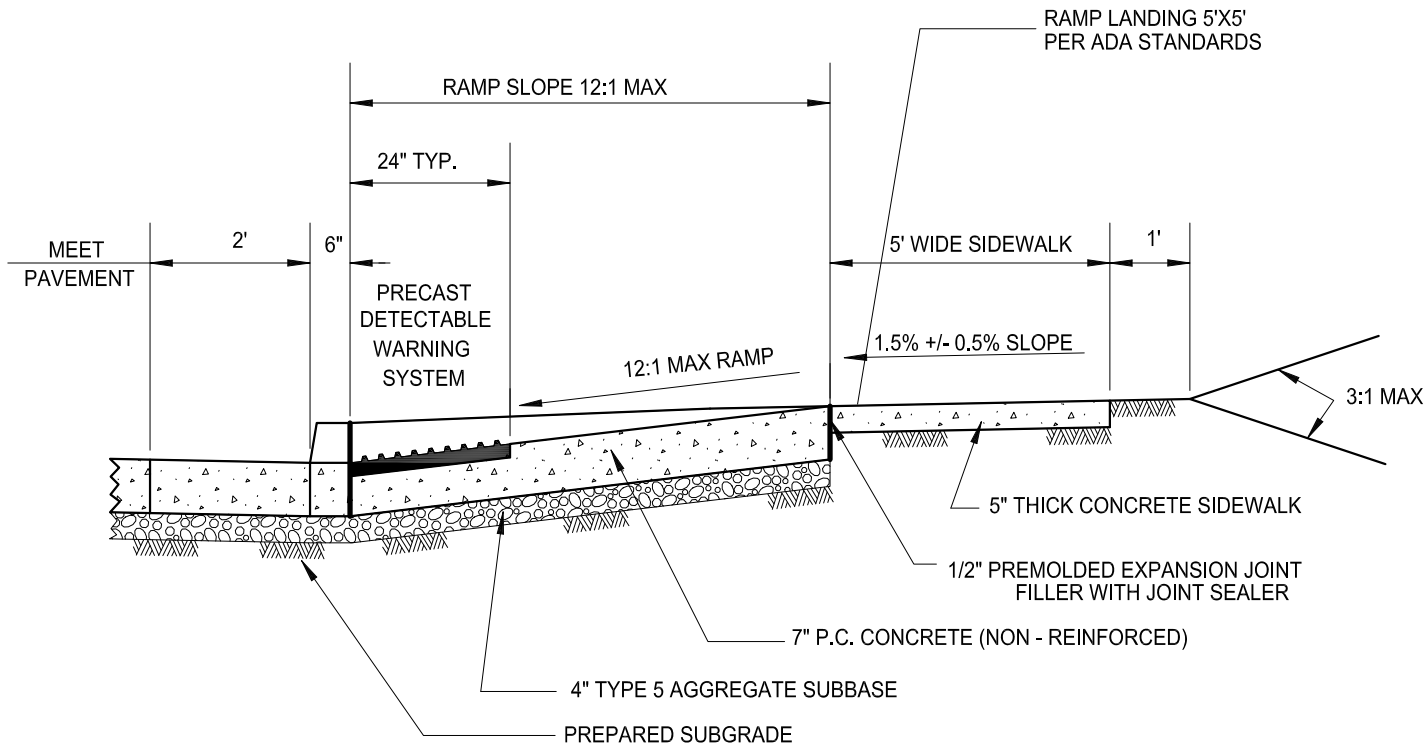
CENTRAL BUSINESS DISTRICT
STREETSCAPE DETAILS

Revisions	Date	Name
	12/14/2009	STREETSCAPE DRAWINGS
	05/06/2010	STREETSCAPE DRAWINGS
	07/01/2010	STREETSCAPE DRAWINGS
	11/10/2010	STREETSCAPE DRAWING UPDATE
	12/22/2010	STREETSCAPE DRAWING UPDATE
	09/19/2011	STREETSCAPE DRAWING UPDATE
	07/24/2012	STREETSCAPE DRAWING UPDATE

Checked By: JW
 Drawn By: CAK
 Drawing Scale: 1"=3'
 Drawing Number:

C-7

CENTRAL BUSINESS DISTRICT
STREETSCAPE DETAILS



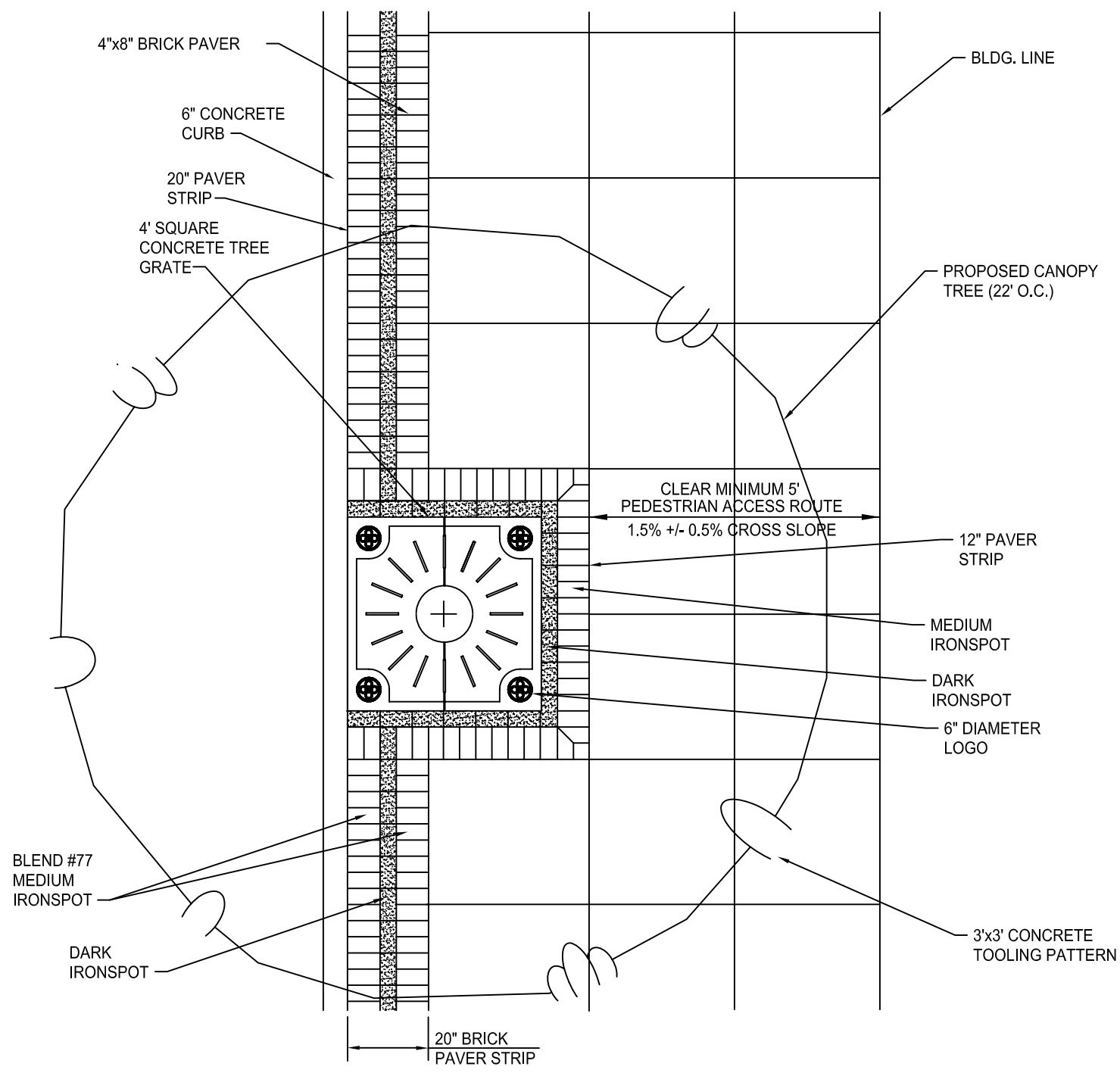
SECTION OF ADA ACCESSIBLE CURB RAMP - TYP.

Revisions	
Date	Name
12/14/2009	STREETSCAPE DRAWINGS
05/06/2010	STREETSCAPE DRAWINGS
07/01/2010	STREETSCAPE DRAWINGS
11/10/2010	STREETSCAPE DRAWING UPDATE
12/22/2010	STREETSCAPE DRAWING UPDATE
09/19/2011	STREETSCAPE DRAWING UPDATE
07/24/2012	STREETSCAPE DRAWING UPDATE

Checked By: JW
 Drawn By: CAK
 Drawing Scale: 1"=3'
 Drawing Number:



DOWNTOWN CLAYTON
STREETSCAPE DETAILS

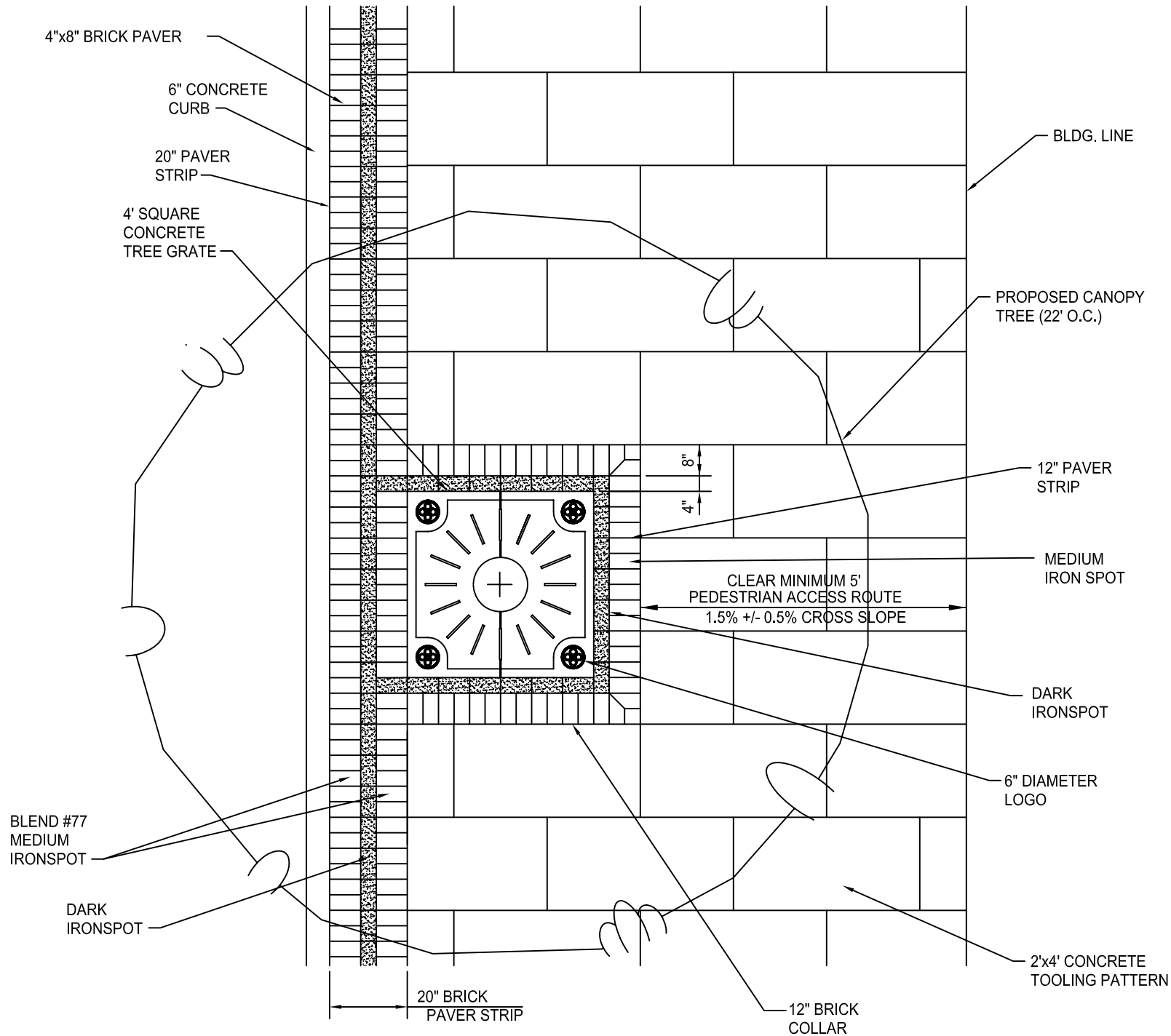


SIDEWALK DETAIL - 3'x3', TREETWELL IN 20" BRICK BAND

Revisions	Date	Name
	09/19/2011	STREETSCAPE DRAWING UPDATE
	07/24/2012	STREETSCAPE DRAWING UPDATE
	06/09/2013	STREETSCAPE DRAWING UPDATE
	03/18/2014	MEDIUM IRONSPOT BLEND #77

Checked By: JW
 Drawn By: CAK
 Drawing Scale: 1"=3'
 Drawing Number:

DOWNTOWN CLAYTON
STREETSCAPE DETAILS



SIDEWALK DETAIL - 2'x4', TREEWELL NEXT TO 20" BRICK BAND

Revisions	Date	Name
	09/19/2011	STREETSCAPE DRAWING UPDATE
	07/24/2012	STREETSCAPE DRAWING UPDATE
	08/09/2013	STREETSCAPE DRAWING UPDATE
	03/18/2014	MEDIUM IRONSPOT BLEND #77

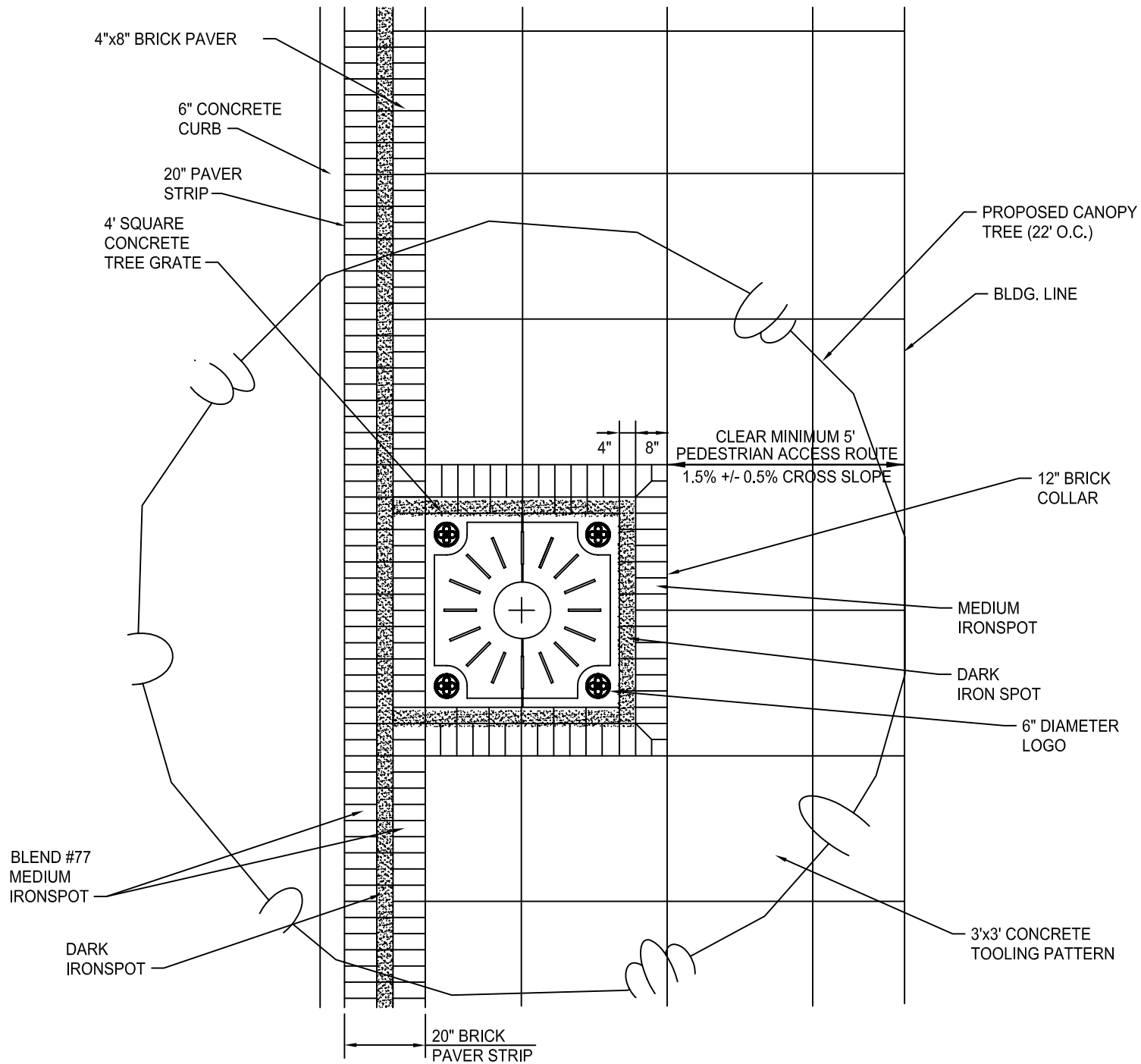
Checked By: JW

Drawn By: CAK

Drawing Scale: 1"=3'

Drawing Number:

DOWNTOWN CLAYTON
STREETSCAPE DETAILS

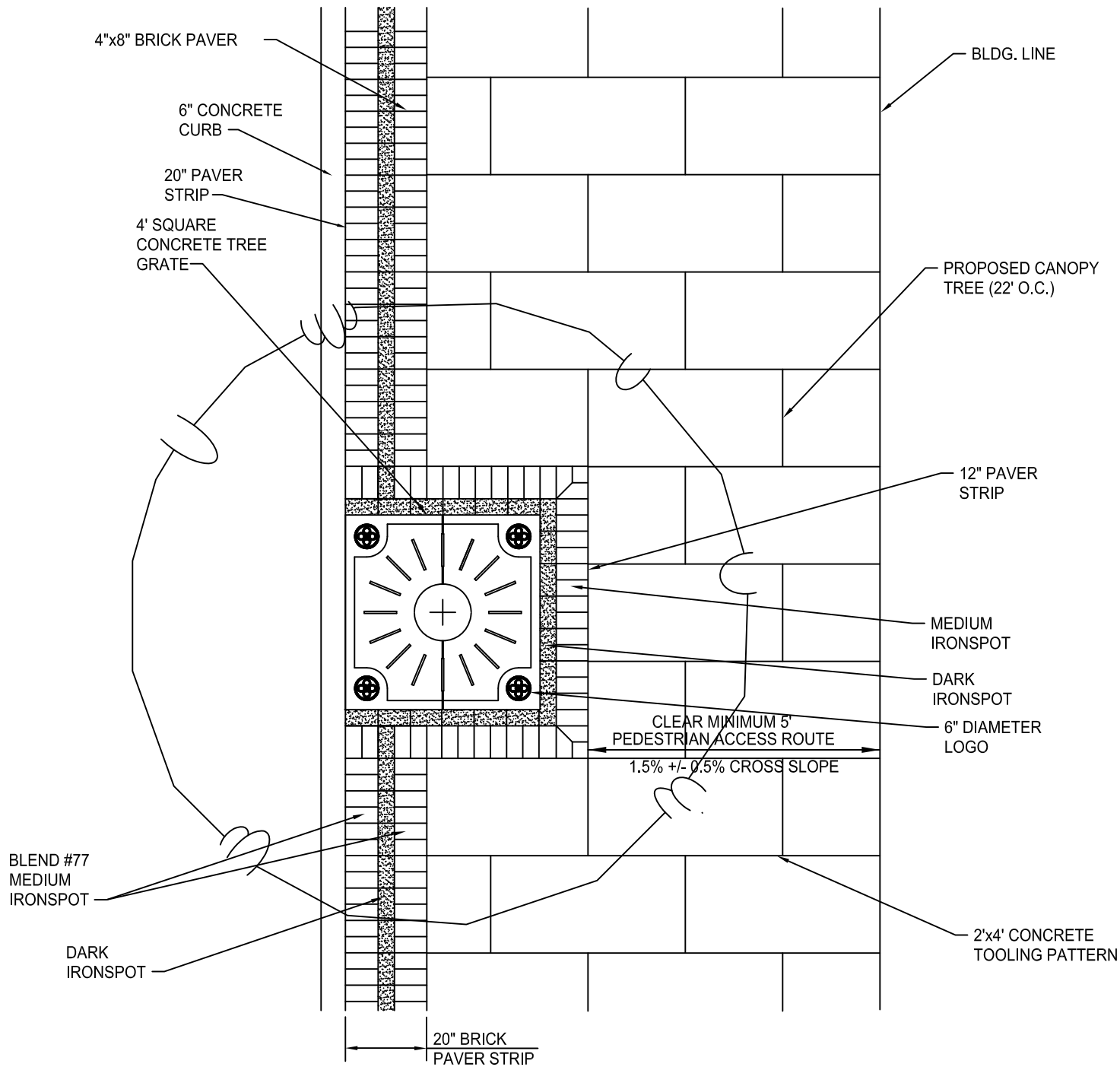


SIDEWALK DETAIL - 3'x3', TREETWELL NEXT TO 20" BRICK BAND

Revisions	Name	Date
	STREETSCAPE DRAWING UPDATE	09/19/2011
	STREETSCAPE DRAWING UPDATE	07/24/2012
	STREETSCAPE DRAWING UPDATE	08/09/2013
	MEDIUM IRONSPOT BLEND #77	03/18/2014

Checked By: JW
 Drawn By: CAK
 Drawing Scale: 1"=3'
 Drawing Number:

DOWNTOWN CLAYTON
STREETSCAPE DETAILS



SIDEWALK DETAIL - 2'x4', TREEWELL IN 20" BRICK BAND

Revisions	
Date	Name
09/19/2011	STREETSCAPE DRAWING UPDATE
07/24/2012	STREETSCAPE DRAWING UPDATE
08/09/2013	STREETSCAPE DRAWING UPDATE
03/18/2014	MEDIUM IRONSPOT BLEND #77

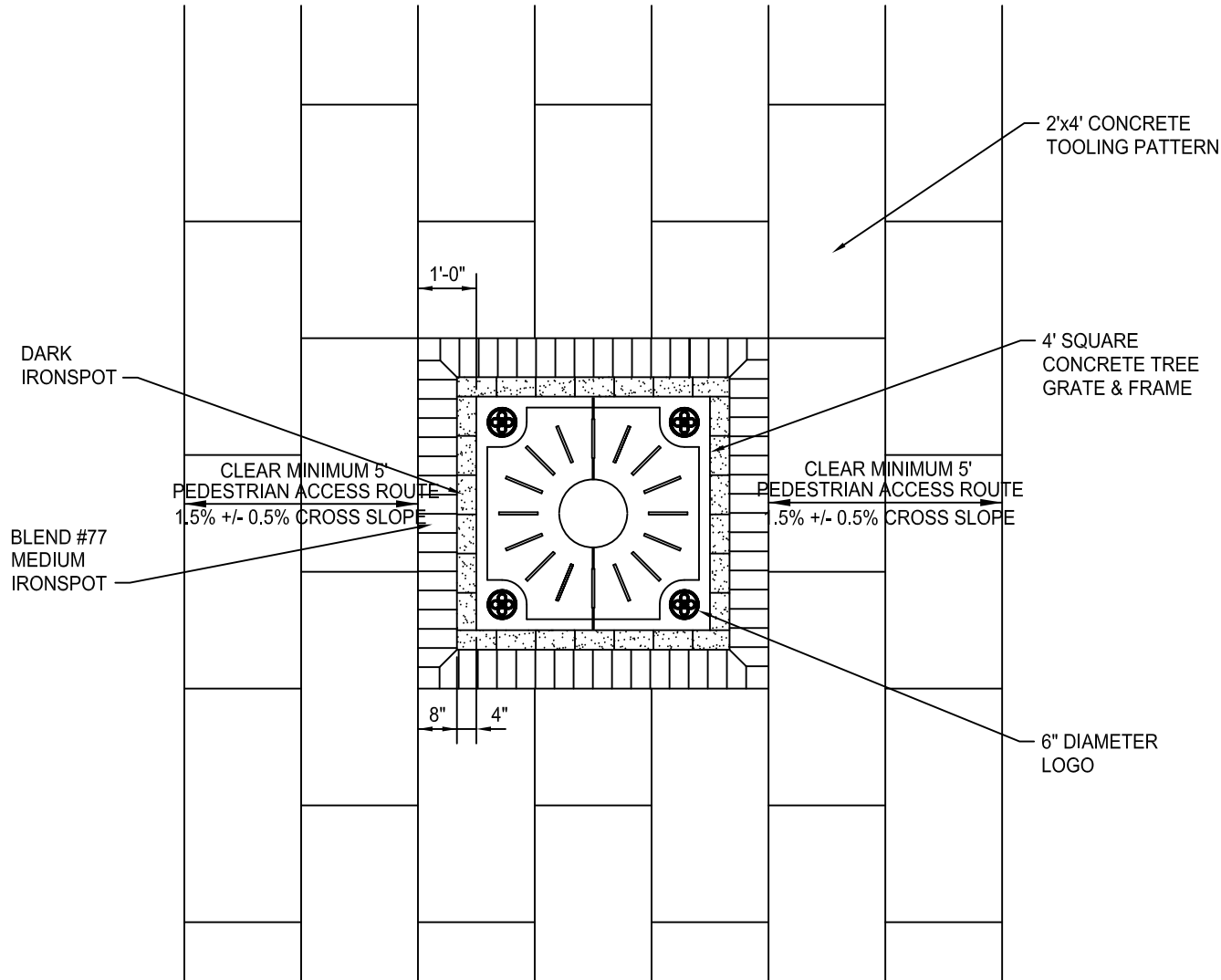
Checked By: JW

Drawn By: CAK

Drawing Scale: 1"=3'

Drawing Number:

DOWNTOWN CLAYTON
STREETSCAPE DETAILS



TYPICAL TREE WELL DETAIL AT CURB PULL OUTS

Revisions	
Date	Name
09/19/2011	STREETSCAPE DRAWING UPDATE
07/24/2012	STREETSCAPE DRAWING UPDATE
08/09/2013	STREETSCAPE DRAWING UPDATE
03/18/2014	MEDIUM IRONSPOT BLEND #77

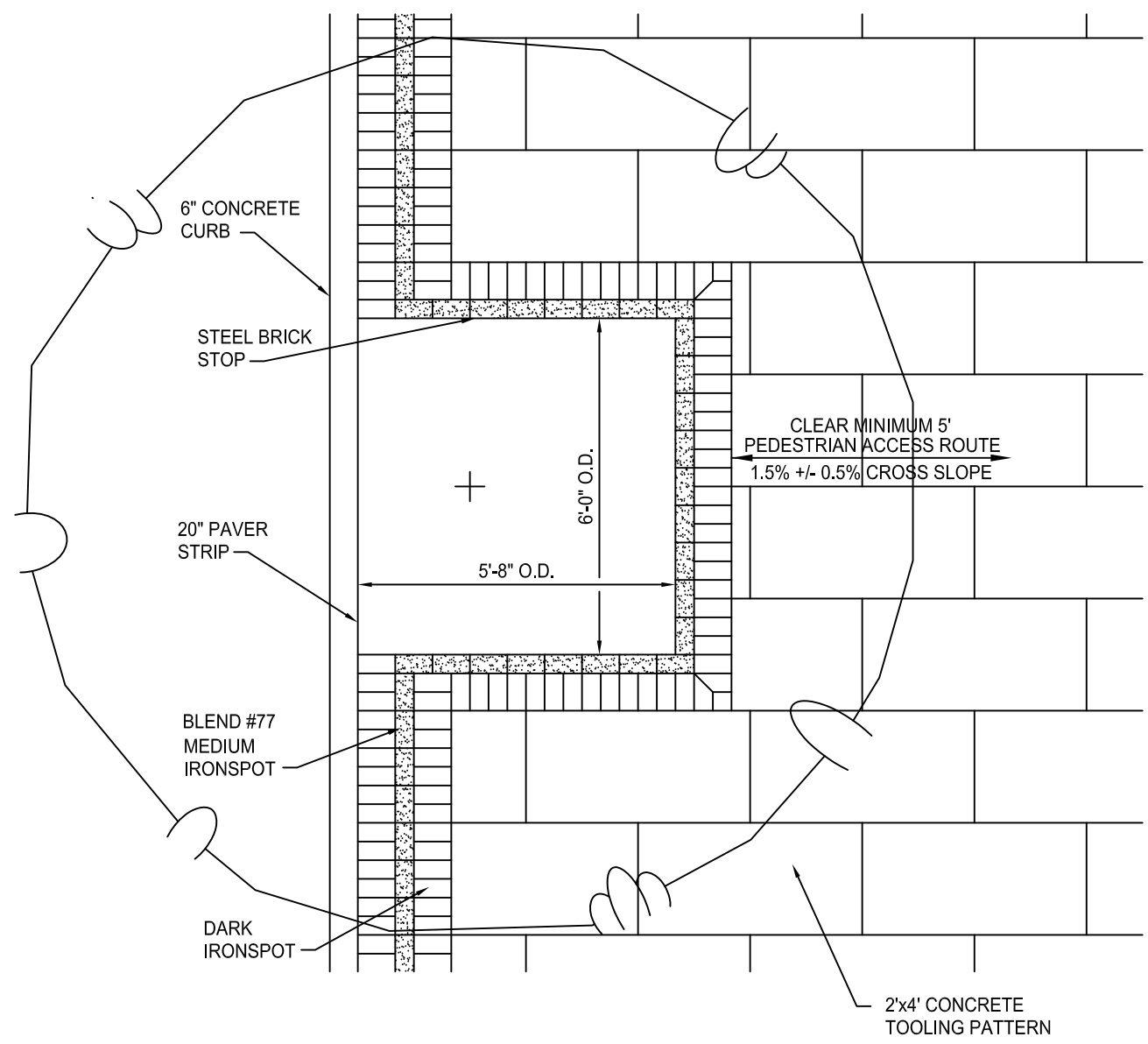
Checked By: JW

Drawn By: CAK

Drawing Scale: 1"=3'

Drawing Number:

DOWNTOWN CLAYTON
STREETSCAPE DETAILS

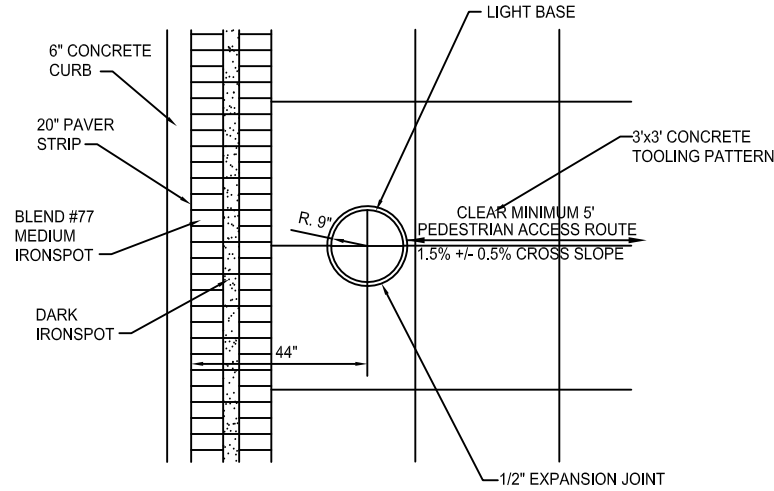


SIDEWALK DETAIL FOR TREES THAT REMAIN

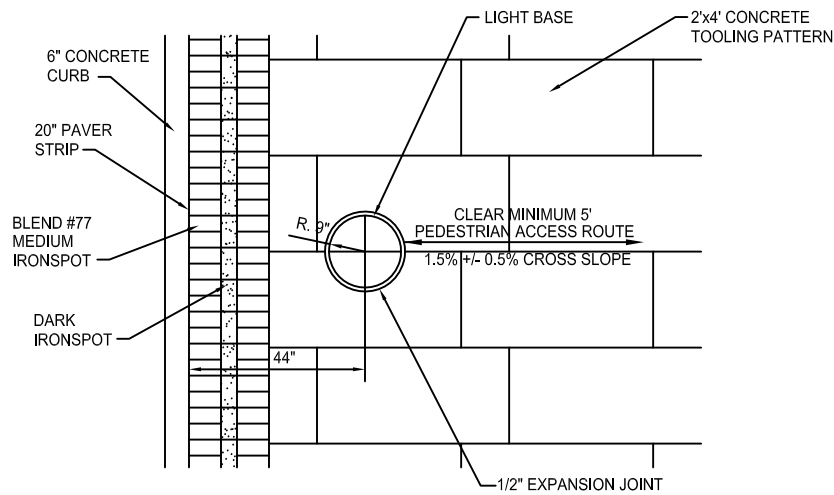
Revisions	Date	Name
	09/19/2011	STREETSCAPE DRAWING UPDATE
	07/24/2012	STREETSCAPE DRAWING UPDATE
	06/09/2013	STREETSCAPE DRAWING UPDATE
	03/18/2014	MEDIUM IRONSPOT BLEND #77

Checked By: JW
 Drawn By: CAK
 Drawing Scale: 1"=3'
 Drawing Number:

DOWNTOWN CLAYTON
STREETSCAPE DETAILS



3'x3' SIDEWALK PATTERN AT LIGHT BASE
44" FROM BACK OF CURB



2'x4' SIDEWALK PATTERN AT LIGHT BASE
44" FROM BACK OF CURB

Revisions	
Date	Name
09/19/2011	STREETSCAPE DRAWING UPDATE
07/24/2012	STREETSCAPE DRAWING UPDATE
08/09/2013	STREETSCAPE DRAWING UPDATE
03/18/2014	MEDIUM IRONSPOT BLEND #77

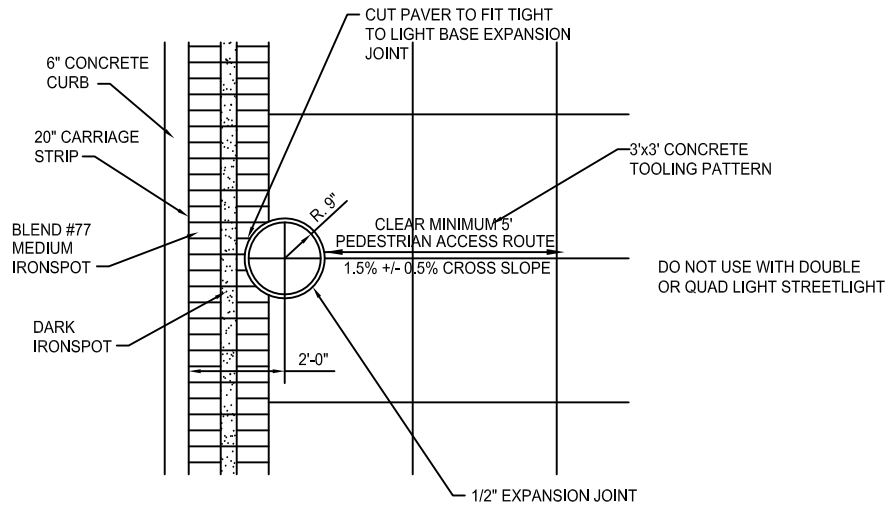
Checked By: JW

Drawn By: CAK

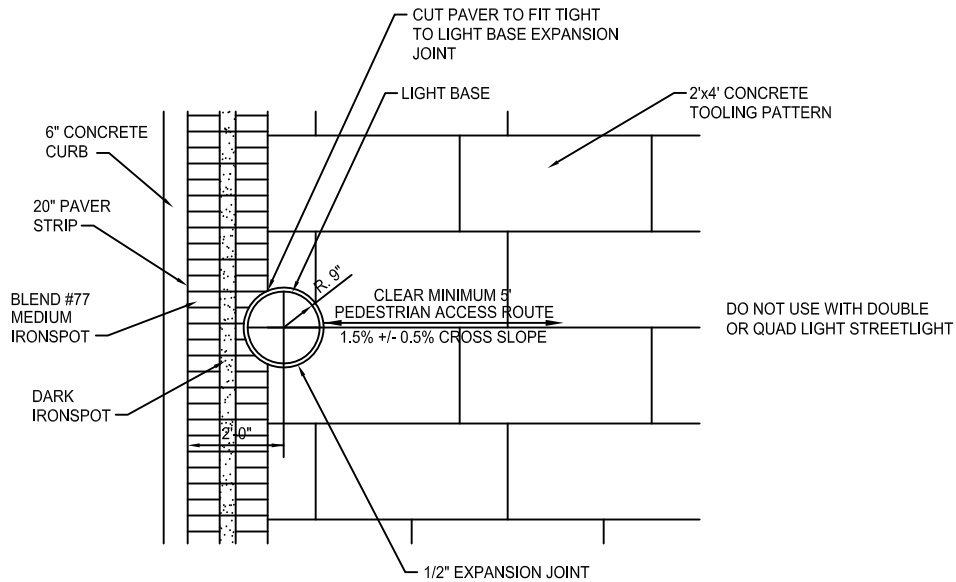
Drawing Scale: 1"=3'

Drawing Number:

DOWNTOWN CLAYTON
STREETSCAPE DETAILS



3'x3' SIDEWALK PATTERN AT LIGHT BASE
24" FROM BACK OF CURB



2'x4' SIDEWALK PATTERN AT LIGHT BASE
24" FROM BACK OF CURB

Revisions	
Date	Name
09/19/2011	STREETSCAPE DRAWING UPDATE
07/24/2012	STREETSCAPE DRAWING UPDATE
08/09/2013	STREETSCAPE DRAWING UPDATE
03/18/2014	MEDIUM IRONSPOT BLEND #77

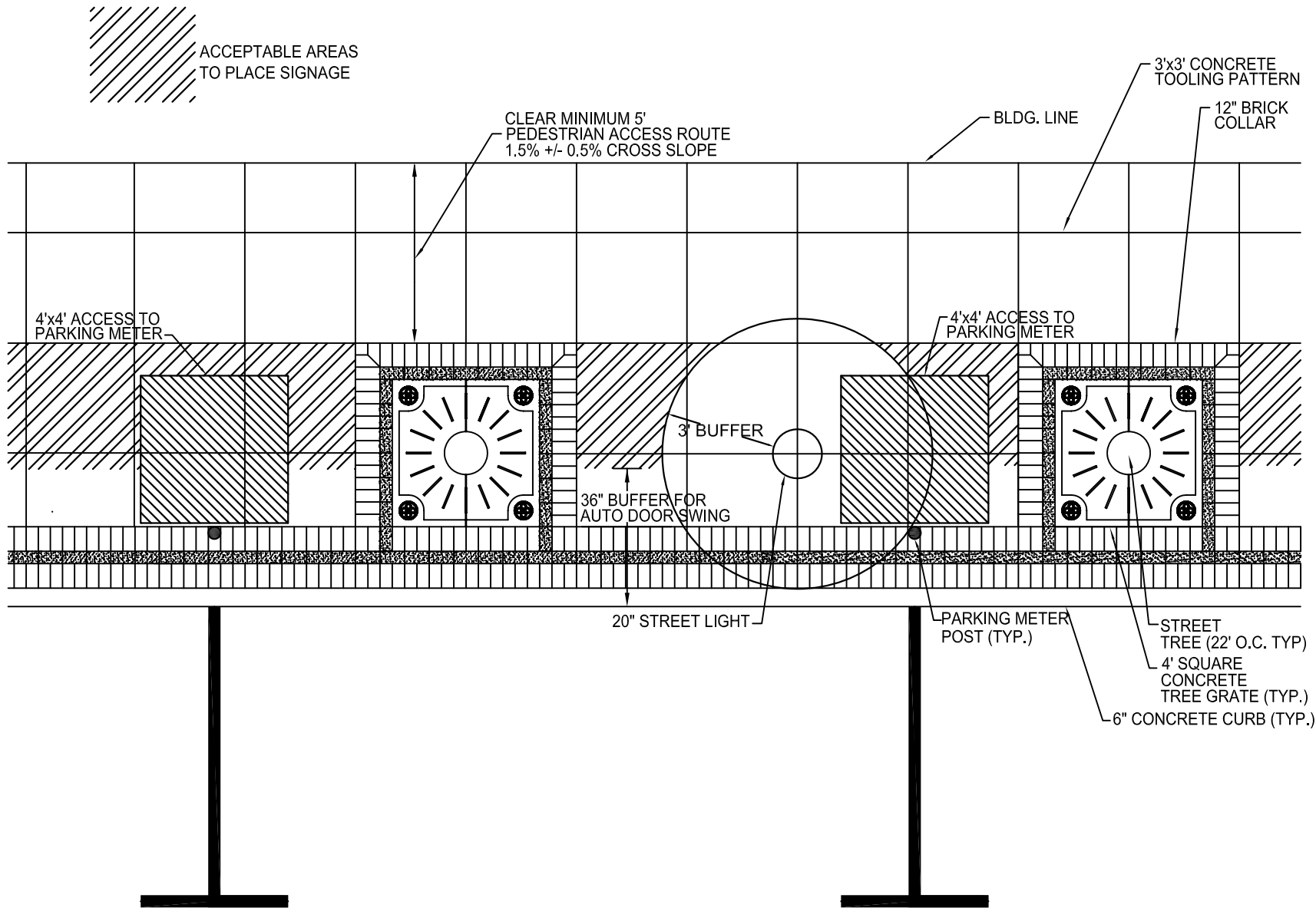
Checked By: JW

Drawn By: CAK

Drawing Scale: 1"=4'

Drawing Number:

CENTRAL BUSINESS DISTRICT
STREETSCAPE DETAILS



ADA SIDEWALK DETAIL FOR POTENTIAL A-FRAME/SIGNAGE LOCATIONS

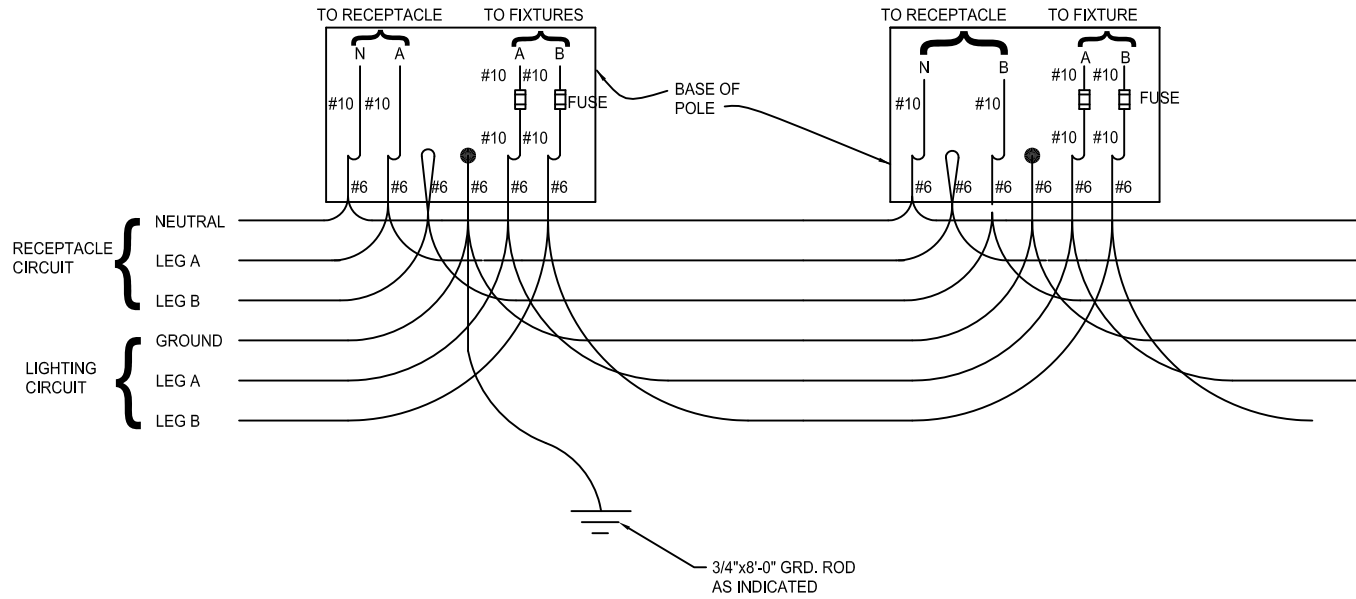
NOTE - IF PEDESTRIAN ACCESS ROUTE IS LESS THAN 5 FEET FROM 12" BRICK COLLAR TO BUILDING;
THE PEDESTRIAN ACCESS ROUTE SHALL WIDEN TO 5 FEET IN WIDTH BETWEEN TREES.

Revisions	Date	Name
	12/14/2009	STREETSCAPE DRAWINGS
	05/06/2010	STREETSCAPE DRAWINGS
	07/01/2010	STREETSCAPE DRAWINGS
	11/10/2010	STREETSCAPE DRAWING UPDATE
	12/22/2010	STREETSCAPE DRAWING UPDATE
	09/19/2011	STREETSCAPE DRAWING UPDATE
	07/24/2012	STREETSCAPE DRAWING UPDATE

Checked By: JW
 Drawn By: CAK
 Drawing Scale: 1"=4'
 Drawing Number:

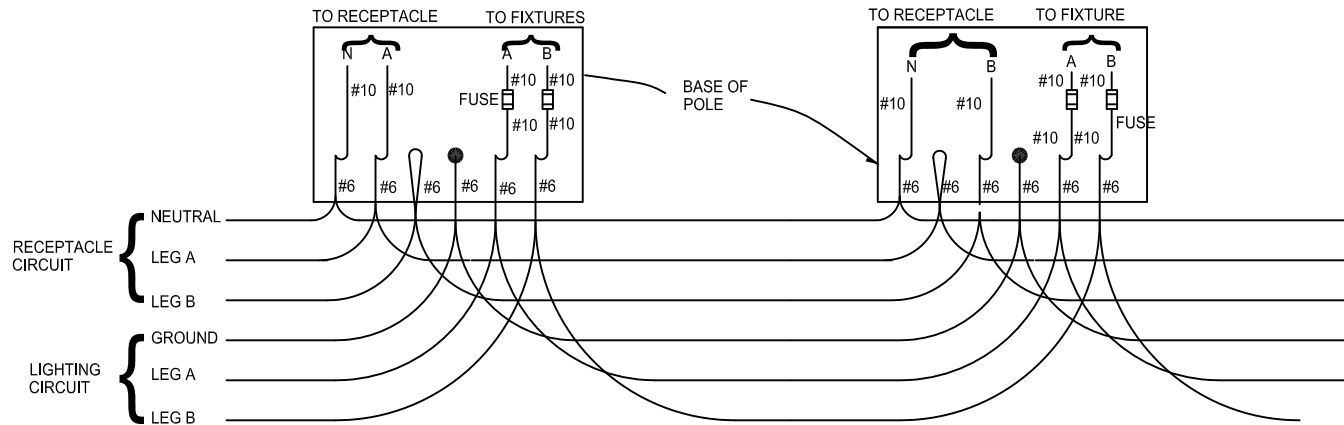
CENTRAL BUSINESS DISTRICT
STREETSCAPE DETAILS

USE FOR GROUND WIRE (GROUND ROD NOT AT PANEL)



TYPICAL WIRING DIAGRAM
SCALE: N.T.S.

USE FOR NO GROUND WIRE (GROUND ROD AT PANEL)



TYPICAL WIRING DIAGRAM
SCALE: N.T.S.

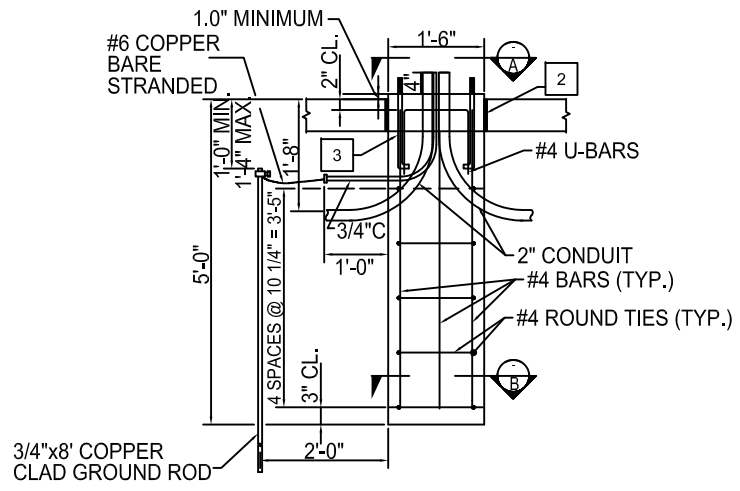
Revisions	Date	Name
	12/14/2009	STREETSCAPE DRAWINGS
	05/06/2010	STREETSCAPE DRAWINGS
	07/01/2010	STREETSCAPE DRAWINGS
	11/10/2010	STREETSCAPE DRAWING UPDATE
	12/22/2010	STREETSCAPE DRAWING UPDATE
	09/19/2011	STREETSCAPE DRAWING UPDATE
	07/24/2012	STREETSCAPE DRAWING UPDATE

Checked By: JW
 Drawn By: CAK
 Drawing Scale: 1"=4'
 Drawing Number:

KEYED NOTES:

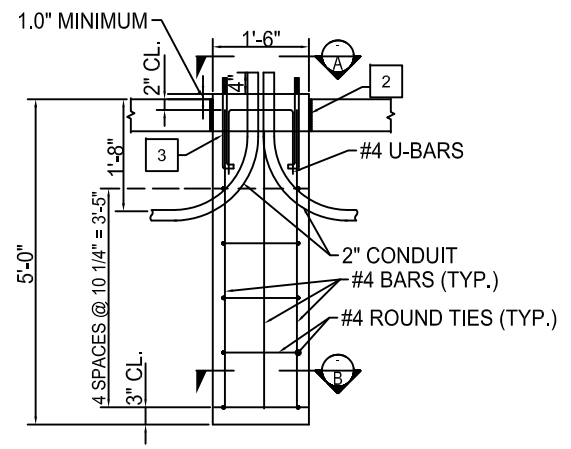
- 1 RADIUS TO INSIDE OF ROUND TIE IS 7 1/8".
- 2 1/2"x5" NON-GASSING EXP. JOINT. "HOMEX PLUS" OR APPROVED EQUAL. CAULK JOINT.
- 3 4-3/4"Øx16"x2" GALVANIZED STEEL ANCHOR BOLTS ON A 13 1/2" BOLT CIRCLE.

USE WHEN GROUND ROD IS AT STREET LIGHTS

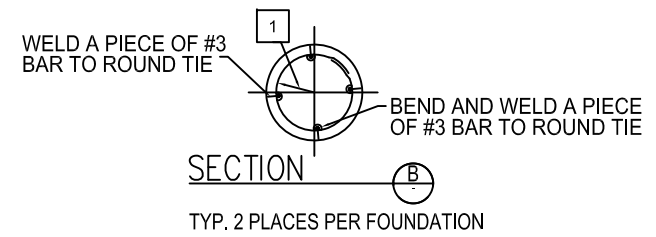
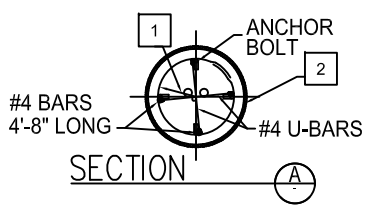


CROSS SECTION OF LIGHT POLE FOUNDATION

USE WHEN GROUND ROD IS AT PANEL



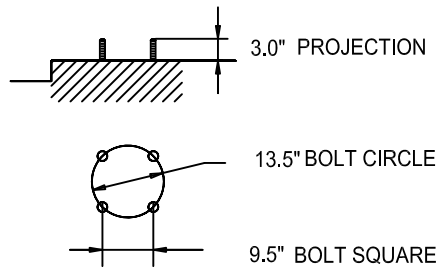
CROSS SECTION OF LIGHT POLE FOUNDATION



Revisions	
Date	Name
12/14/2009	STREETSCAPE DRAWINGS
05/06/2010	STREETSCAPE DRAWINGS
07/01/2010	STREETSCAPE DRAWINGS
11/10/2010	STREETSCAPE DRAWING UPDATE
12/22/2010	STREETSCAPE DRAWING UPDATE
09/19/2011	STREETSCAPE DRAWING UPDATE
07/24/2012	STREETSCAPE DRAWING UPDATE

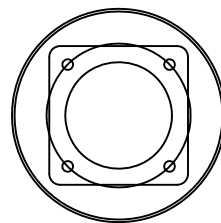
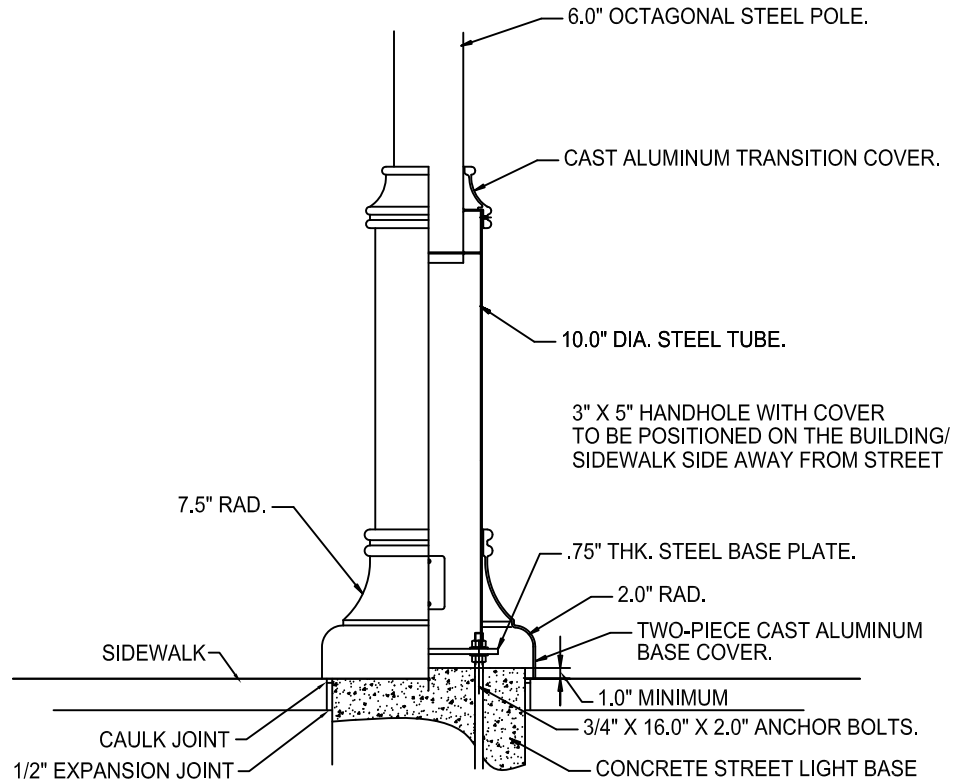
Checked By: JW
 Drawn By: CAK
 Drawing Scale: 1"=3'
 Drawing Number:

CENTRAL BUSINESS DISTRICT
STREETSCAPE DETAILS



ANCHORAGE DETAIL
NOT TO SCALE

NOTE: FOR ORIENTATION TO CURB
OTHER THAN SHOWN, CONSULT
FACTORY.



BASE DETAIL
NOT TO SCALE

Revisions	Date	Name
	12/14/2009	STREETSCAPE DRAWINGS
	05/06/2010	STREETSCAPE DRAWINGS
	07/01/2010	STREETSCAPE DRAWINGS
	11/10/2010	STREETSCAPE DRAWING UPDATE
	12/22/2010	STREETSCAPE DRAWING UPDATE
	09/19/2011	STREETSCAPE DRAWING UPDATE
	07/24/2012	STREETSCAPE DRAWING UPDATE

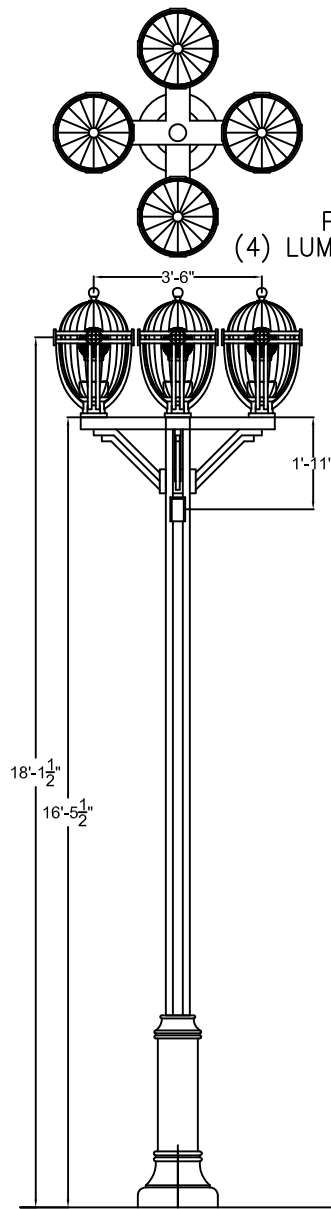
Checked By: JW

Drawn By: CAK

Drawing Scale: 1"=3'

Drawing Number:

CENTRAL BUSINESS DISTRICT
STREETSCAPE DETAILS



PLAN VIEW
(4) LUMINAIRES @ 90°

ELEVATION VIEW
(4) LUMINAIRES @ 90°

LUMINAIRE SPECIFICATIONS

FINIAL: CAST ALUMINUM, MECHANICALLY ATTACHED TO UPPER DIFFUSER. FINIAL TO BE USED AS A HANDLE DURING LUMINAIRE SERVICE.
 UPPER DIFFUSER: CLEAR FLUTED ACRYLIC, WITH A HEAVY SHOTBLAST ON INSIDE SURFACE.
 HOUSING: CAST ALUMINUM.
 REFRACTOR: 8.0" DIA. BOROSILICATE GLASS FOR A TYPE (5) I.E.S. DISTRIBUTION.
 STRUTS: CAST ALUMINUM.
 LOWER DIFFUSER: CLEAR FLUTED ACRYLIC, WITH A LIGHT SHOT BLAST FINISH ON INSIDE SURFACE.
 BALLAST COVER: SPUN ALUMINUM.
 FITTER: CAST ALUMINUM.

ELECTRICAL SPECIFICATIONS

BALLAST: 100 WATT/240 VOLT CORE, AND COIL, MOUNTED INSIDE LUMINAIRE.
 LAMPHOLDER: PULSE RATED MEDIUM BASE PORCELAIN.
 LAMP: 100 WATT HIGH PRESSURE SODIUM (HPS), BY FIXTURE MANUFACTURER.

MOUNTING SPECIFICATIONS

ARM: 3.0" X 6.0" RECTANGULAR ALUMINUM TUBE.
 BRACE: CAST ALUMINUM.

POLE SPECIFICATIONS

UPPER SHAFT: OCTAGONAL STRAIGHT STEEL 6.0" DIA. (ACROSS FLATS) X 11 GA. WALL.
 LOWER SHAFT: ROUND STRAIGHT STEEL, 10.0" DIA. X .12" WALL.
 HANDHOLE: 3.0" X 5.0" WITH COVER.
 BASE COVER: 20.0" DIA. X 14.0" HIGH TWO-PIECE CAST ALUMINUM.
 BASE: 13.0" SQ. X .75" THK. STEEL PLATE WELDED TO POLE.

ANCHORAGE: (4) 3/4" X 16.0" X 2.0" GALVANIZED STEEL ANCHOR BOLTS ON A 13.5" DIA. BOLT CIRCLE.

FINISH: FACTORY APPLIED TENEMEC POLYURETHANE OR APPROVED EQUAL.

NOTES:
 1. FIXTURE TO BEAR "UL" LABEL "SUITABLE FOR WET LOCATIONS".

Revisions	Date	Name
	12/14/2009	STREETSCAPE DRAWINGS
	05/06/2010	STREETSCAPE DRAWINGS
	07/01/2010	STREETSCAPE DRAWINGS
	11/10/2010	STREETSCAPE DRAWING UPDATE
	12/22/2010	STREETSCAPE DRAWING UPDATE
	09/19/2011	STREETSCAPE DRAWING UPDATE
	07/24/2012	STREETSCAPE DRAWING UPDATE

Checked By: JW
 Drawn By: CAK
 Drawing Scale: 1"=4'
 Drawing Number:

CENTRAL BUSINESS DISTRICT
STREETSCAPE DETAILS

LUMINAIRE SPECIFICATIONS

FINIAL: CAST ALUMINUM, MECHANICALLY ATTACHED TO UPPER DIFFUSER. FINIAL TO BE USED AS A HANDLE DURING LUMINAIRE SERVICE.
 UPPER DIFFUSER: CLEAR FLUTED ACRYLIC, WITH A HEAVY SHOTBLAST ON INSIDE SURFACE.
 HOUSING: CAST ALUMINUM.
 REFRACTOR: 8.0" DIA. BOROSILICATE GLASS FOR A TYPE (5) I.E.S. DISTRIBUTION.
 STRUTS: CAST ALUMINUM.
 LOWER DIFFUSER: CLEAR FLUTED ACRYLIC, WITH A LIGHT SHOT BLAST FINISH ON INSIDE SURFACE.
 BALLAST COVER: SPUN ALUMINUM.
 FITTER: CAST ALUMINUM.

ELECTRICAL SPECIFICATIONS (SINGLE LUMINAIRE)

BALLAST: 150 WATT/240 VOLT CORE, AND COIL, MOUNTED INSIDE LUMINAIRE.
 LAMPHOLDER: PULSE RATED MEDIUM BASE PORCELAIN.
 LAMP: 150 WATT HIGH PRESSURE SODIUM (HPS), BY FIXTURE MANUFACTURER.

ELECTRICAL SPECIFICATIONS (TWIN LUMINAIRES)

BALLAST: 100 WATT/240 VOLT CORE, AND COIL, MOUNTED INSIDE LUMINAIRE.
 LAMPHOLDER: PULSE RATED MEDIUM BASE PORCELAIN.
 LAMP: 100 WATT HIGH PRESSURE SODIUM (HPS), BY FIXTURE MANUFACTURER.

MOUNTING SPECIFICATIONS

ARM: 3.0" X 6.0" RECTANGULAR ALUMINUM TUBE.
 BRACE: CAST ALUMINUM.

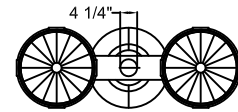
POLE SPECIFICATIONS

UPPER SHAFT: OCTAGONAL STRAIGHT STEEL 6.0" DIA. (ACROSS FLATS) X 11 GA. WALL.
 LOWER SHAFT: ROUND STRAIGHT STEEL, 10.0" DIA. X .12" WALL.
 HANDHOLE: 3.0" X 5.0" WITH COVER.
 BASE COVER: 20.0" DIA. X 14.0" HIGH TWO-PIECE CAST ALUMINUM.
 BASE: 13.0" SQ. X .75" THK. STEEL PLATE WELDED TO POLE.

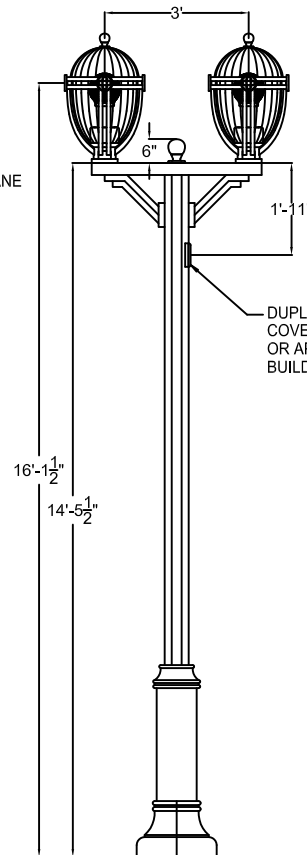
ANCHORAGE: (4) 3/4" X 16.0" X 2.0" GALVANIZED STEEL ANCHOR BOLTS ON A 13.5" DIA. BOLT CIRCLE.

FINISH: FACTORY APPLIED TENEMEC POLYURETHANE OR APPROVED EQUAL

NOTES:
 1. FIXTURE TO BEAR "UL" LABEL "SUITABLE FOR WET LOCATIONS".



PLAN VIEW
TWIN LUMINAIRES



ELEVATION VIEW
TWIN LUMINAIRES

DUPLEX RECPTACLE, WITH WEATHER-PROOF COVER. RECEPTACLE COVER- TayMac #71202, OR APPROVED EQUAL TO BE POSITIONED ON THE BUILDING /SIDEWALK SIDE AWAY FROM THE STREET.

Revisions	Date	Name
	12/14/2009	STREETSCAPE DRAWINGS
	05/06/2010	STREETSCAPE DRAWINGS
	07/01/2010	STREETSCAPE DRAWINGS
	11/10/2010	STREETSCAPE DRAWING UPDATE
	12/22/2010	STREETSCAPE DRAWING UPDATE
	09/19/2011	STREETSCAPE DRAWING UPDATE
	07/24/2012	STREETSCAPE DRAWING UPDATE

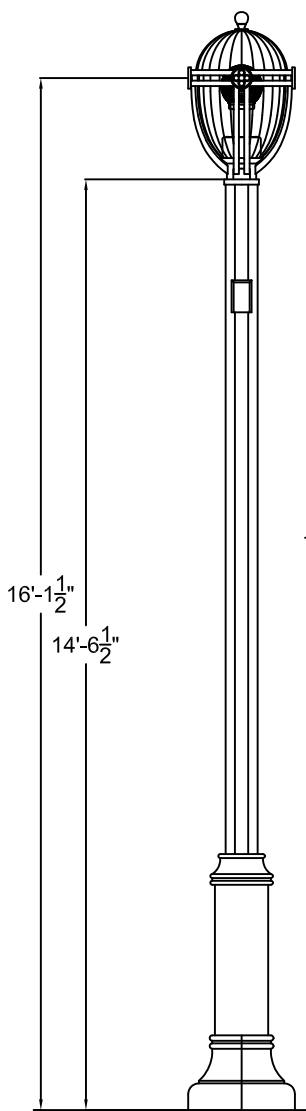
Checked By: JW

Drawn By: CAK

Drawing Scale: 1"=4'

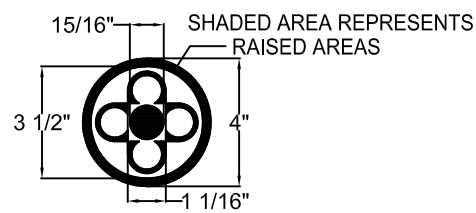
Drawing Number:

CENTRAL BUSINESS DISTRICT
STREETSCAPE DETAILS

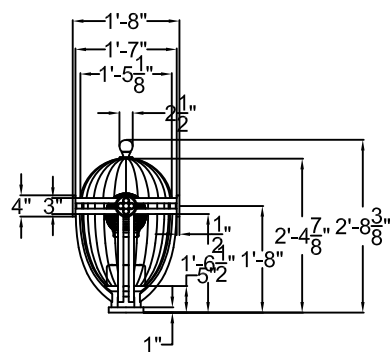


ELEVATION VIEW
SINGLE LUMINAIRE

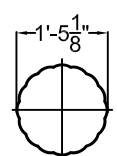
- NOTES:
 1. FIXTURE TO BEAR "UL" LABEL
 "SUITABLE FOR WET LOCATIONS".
 OR APPROVED EQUAL
 2. FACTORY APPLIED TENEMEC POLYURETHANE
 3. ALL FASTENERS TO BE STAINLESS STEEL.



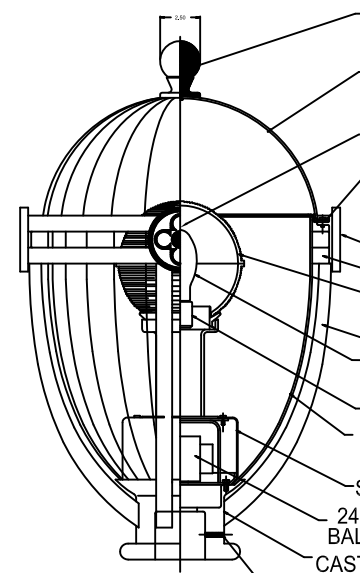
ENLARGED ROSETTE DETAIL
SCALE: N.T.S.



ELEVATION VIEW



DIFFUSER DETAIL



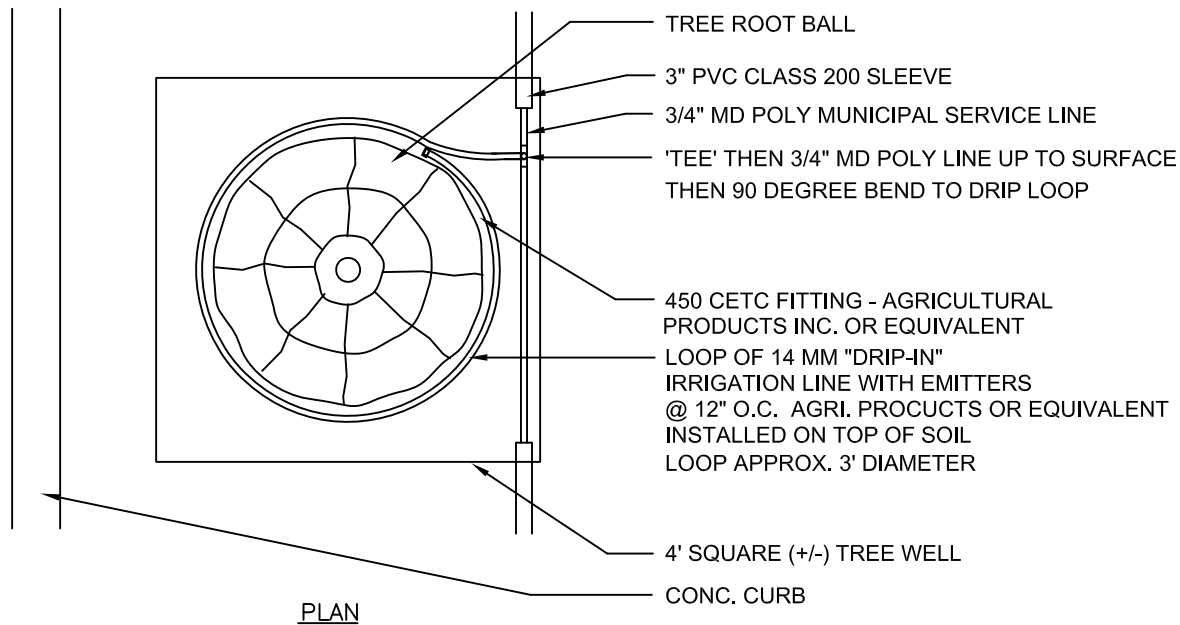
- CAST ALUMINUM FINIAL, MECHANICALLY FASTENED TO UPPER DIFFUSER. FINIAL TO BE USED AS A HANDLE DURING SERVICE.
- CLEAR FLUTED ACRYLIC UPPER DIFFUSER, WITH A HEAVY SHOTBLAST FINISH ON INSIDE SURFACE.
- ROSETTE, SEE DETAIL THIS SHEET
- SPUN ALUMINUM DIFFUSER MOUNTING RINGS.
- (4) CAST ALUMINUM ROSETTS @ 90°.
- CAST ALUMINUM HOUSING.
- 8.0" DIA. BOROSILICATE GLASS REFRACTOR.
- CAST ALUMINUM STRUTS.
- 150 WATT HIGH PRESSURE SODIUM LAMP BY FIXTURE MANUFACTURER
- PULSE RATED MEDIUM BASE PORCELAIN LAMPHOLDER
- CLEAR FLUTED ACRYLIC LOWER DIFFUSER, WITH LIGHT SHOTBLAST FINISH ON INSIDE SURFACE.
- SPUN ALUMINUM BALLAST COVER.
- 240 VOLT CORE, AND COIL BALLAST, BALLAST MANUFACTURERS- UNIVERSAL, OR ADVANCE.
- CAST ALUMINUM FITTER WILL ACCEPT A 3.0" DIA. X 3.0" HIGH POLE TOP.
- (3) 1/4-20 STAINLESS STEEL SETSCREWS @ 120°.

ENLARGED ELEVATION/SECTION VIEW

Revisions	Date	Name
	12/14/2009	STREETSCAPE DRAWINGS
	05/06/2010	STREETSCAPE DRAWINGS
	07/01/2010	STREETSCAPE DRAWINGS
	11/10/2010	STREETSCAPE DRAWING UPDATE
	12/22/2010	STREETSCAPE DRAWING UPDATE
	09/19/2011	STREETSCAPE DRAWING UPDATE
	07/24/2012	STREETSCAPE DRAWING UPDATE

Checked By: JW
 Drawn By: CAK
 Drawing Scale: 1"=3'
 Drawing Number:

CENTRAL BUSINESS DISTRICT
STREETSCAPE DETAILS



PLAN VIEW DRIP IRRIGATION DETAIL @ TREE WELL

SCALE: N.T.S.

A
IR-1

Revisions	Date	Name
	12/14/2009	STREETSCAPE DRAWINGS
	05/06/2010	STREETSCAPE DRAWINGS
	07/01/2010	STREETSCAPE DRAWINGS
	11/10/2010	STREETSCAPE DRAWING UPDATE
	12/22/2010	STREETSCAPE DRAWING UPDATE
	09/19/2011	STREETSCAPE DRAWING UPDATE
	07/24/2012	STREETSCAPE DRAWING UPDATE

Checked By: JW

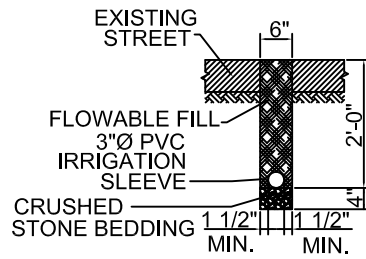
Drawn By: CAK

Drawing Scale: 1"=3'

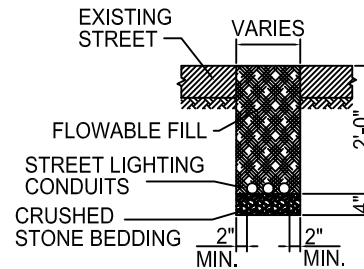
Drawing Number:

IR-1

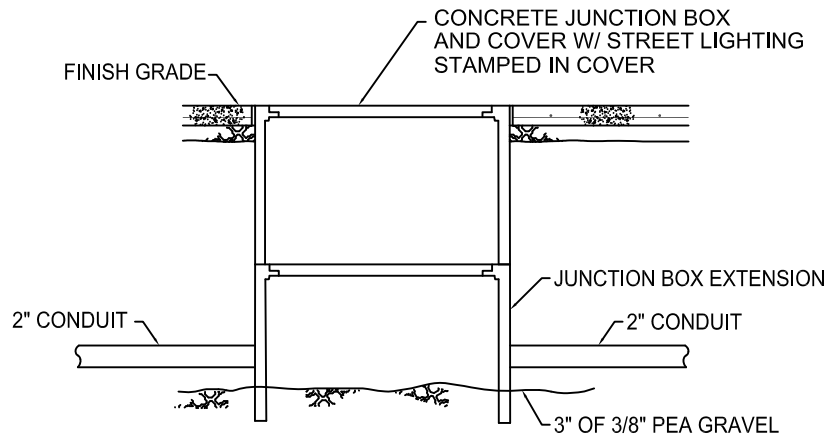
CENTRAL BUSINESS DISTRICT
STREETSCAPE DETAILS



IRRIGATION STREET CROSSING



LIGHTING CONDUIT STREET CROSSING

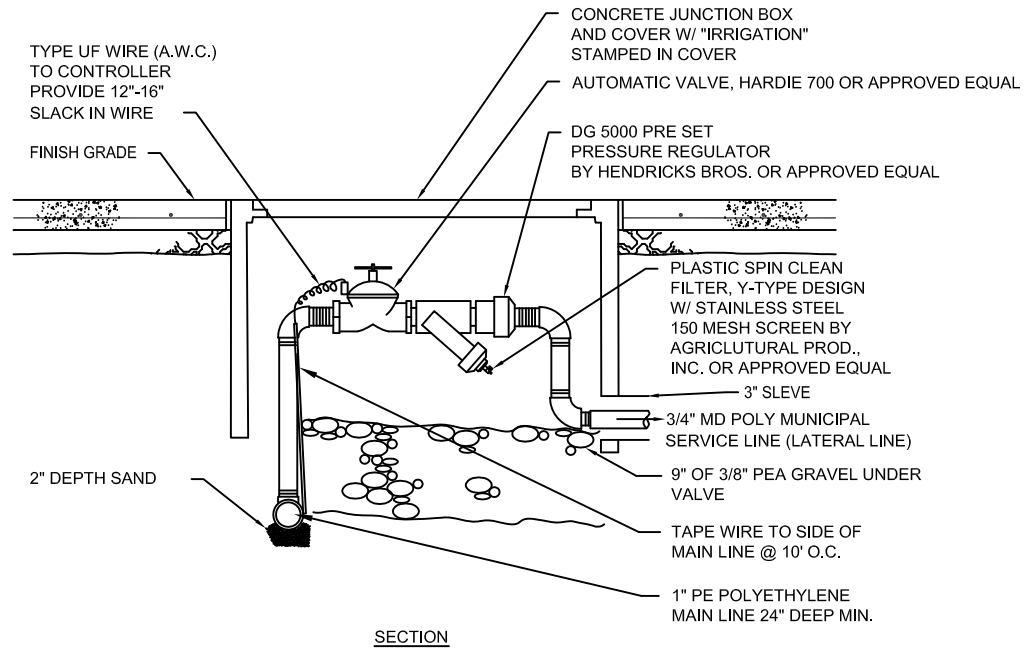


ELECTRICAL JUNCTION BOX
SCALE: N.T.S.

Revisions	
Date	Name
12/14/2009	STREETSCAPE DRAWINGS
05/06/2010	STREETSCAPE DRAWINGS
07/01/2010	STREETSCAPE DRAWINGS
11/10/2010	STREETSCAPE DRAWING UPDATE
12/22/2010	STREETSCAPE DRAWING UPDATE
09/19/2011	STREETSCAPE DRAWING UPDATE
07/24/2012	STREETSCAPE DRAWING UPDATE

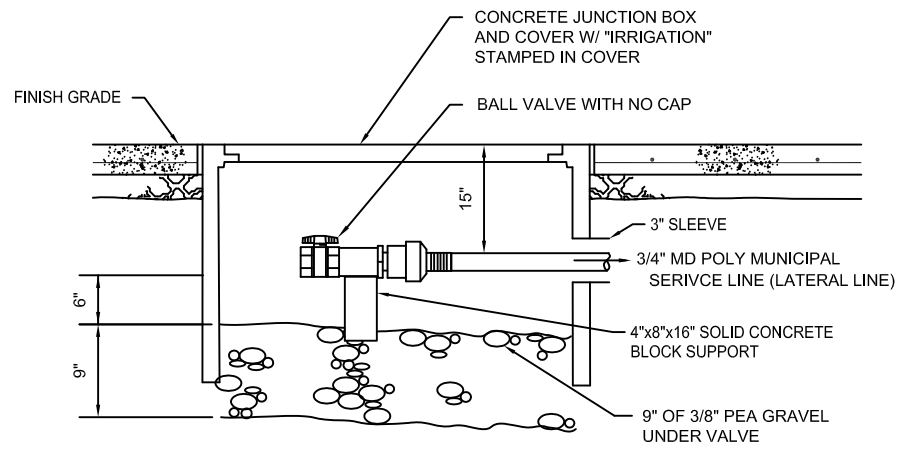
Checked By: JW
 Drawn By: CAK
 Drawing Scale: 1"=3'
 Drawing Number:

CENTRAL BUSINESS DISTRICT
STREETSCAPE DETAILS



SECTION

AUTOMATIC VALVE IN CONC. BOX
SCALE: N.T.S.



SECTION

BALL VALVE IN CONC. BOX
SCALE: N.T.S.

Revisions	Date	Name
	12/14/2009	STREETSCAPE DRAWINGS
	05/06/2010	STREETSCAPE DRAWINGS
	07/01/2010	STREETSCAPE DRAWINGS
	11/10/2010	STREETSCAPE DRAWING UPDATE
	12/22/2010	STREETSCAPE DRAWING UPDATE
	09/19/2011	STREETSCAPE DRAWING UPDATE
	07/24/2012	STREETSCAPE DRAWING UPDATE

Checked By: JW
 Drawn By: CAK
 Drawing Scale: 1"=4'
 Drawing Number: