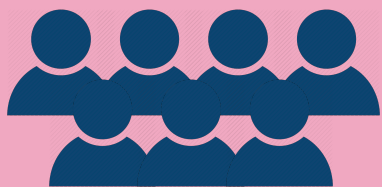


# City of Clayton

# Government Stats

## TYPE OF GOVERNMENT COUNCIL & MANAGER



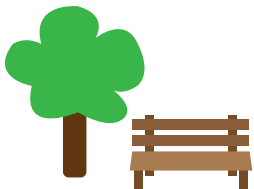
**MAYOR &  
6 ALDERMEN**



**CITY  
MANAGER**

ST. LOUIS COUNTY  
**SEAT**

**HUB** OF  
ST. LOUIS  
METROPOLITAN  
REGION



**EMPLOYEES** **177.5**  
FULL-TIME  
**115.0**  
PART-TIME

**AAA  
RATED**  
STANDARD & POOR'S

**WORLD-CLASS  
PUBLIC SERVICES**

TOTAL ANNUAL BUDGET  
**\$26,171,411**