

OVERLAY PLAN RECOMMENDATIONS

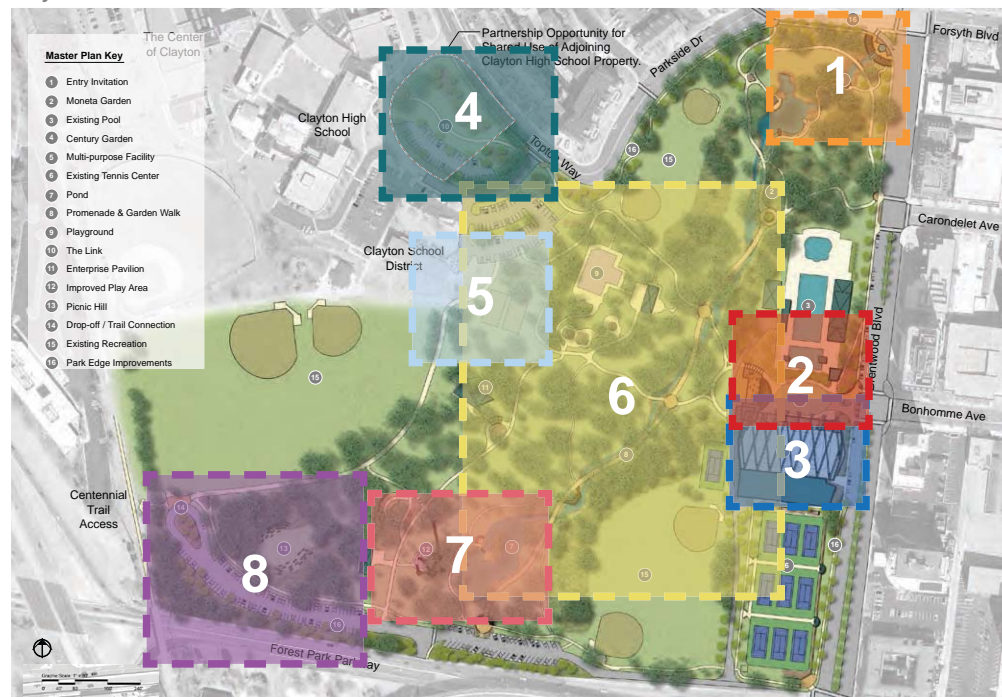
CHAPTER TWO

The recommendations included on the following pages are the culmination of a thorough design process, including stakeholder meetings and public outreach. They are designed to enhance existing features within Shaw Park and build upon the successes of the park and greater City-wide park system. The recommendations embody the City's vision: to create a one of a kind park reflecting the City's distinctive style and inviting residents and Downtown Clayton district users to take part in a community experience that serves to connect, engage, and delight people of all ages. The recommendations improve park infrastructure, provide habitat, enhance connectivity, and create multi-purpose amenities. Above all, the recommendations will lead to sustainable advancements in citizen well-being, park ecology, and economic development for park users and the community at large.

Recommendation Improvement Areas:

1. Brentwood and Forsyth
2. Century Garden
3. Multi-Purpose Facility
4. The Link
5. Park Edge Improvements
6. Promenade and Strolling Garden
7. Pond Amenities
8. South Parking and Picnic Hill

Key Plan





Brentwood and Forsyth Plan Enlargement

BRENTWOOD AND FORSYTH

A formalized entry feature invites guests to enjoy the serenity of the urban oasis. Once inside the park, open space is reserved for a multitude of uses including picnicking, walking, dining, garden exploration, meditation, and ecological observation. A network of purposefully located picnic areas and walking paths creates a series of experiences that allow guests to visit the park for a quick business lunch or meeting, as well as a family picnic that lasts the afternoon.



Seating Node



Water's Edge Seating

AMENITIES

- Active and Inviting Entry at Brentwood & Forsyth
- Plaza and Fountain
- Water Feature
- Pavilion and Event Lawn
- Seating and Picnic Areas Integrated into Landscape
- Accessible Entry
- Improved Streetscape and Park Edge
- Improved Habitat
- Storm Water Management and Water Quality Improvement
- Educational and Interpretive Opportunities
- Fishing Pier
- Improved pedestrian walk at Forsyth, added tree lawn
- Decorative Bridge
- Cascade Garden



View from Proposed Pond to Corner of Brentwood and Forsyth



View of Entry Plaza at Brentwood and Forsyth

PLAZA AND WATER FEATURE

The entry plaza offers a gathering point and an inviting entrance into Shaw Park. The plaza serves as an entrance for guests coming from Downtown Clayton. Guests may come here for lunch or simply to enjoy views of the park or the sights and sounds of the water feature.

AMENITIES

- Pedestrian Friendly Overlook
- Trellis Colonnade
- Inviting Views Into the Park
- Improved Crosswalk Connection
- Cafe Tables
- Wi-Fi Zone
- Standard Streetscape and Site Furnishings
- Start of Water Cascade
- Pedestrian Access Into Park



Entry Plaza



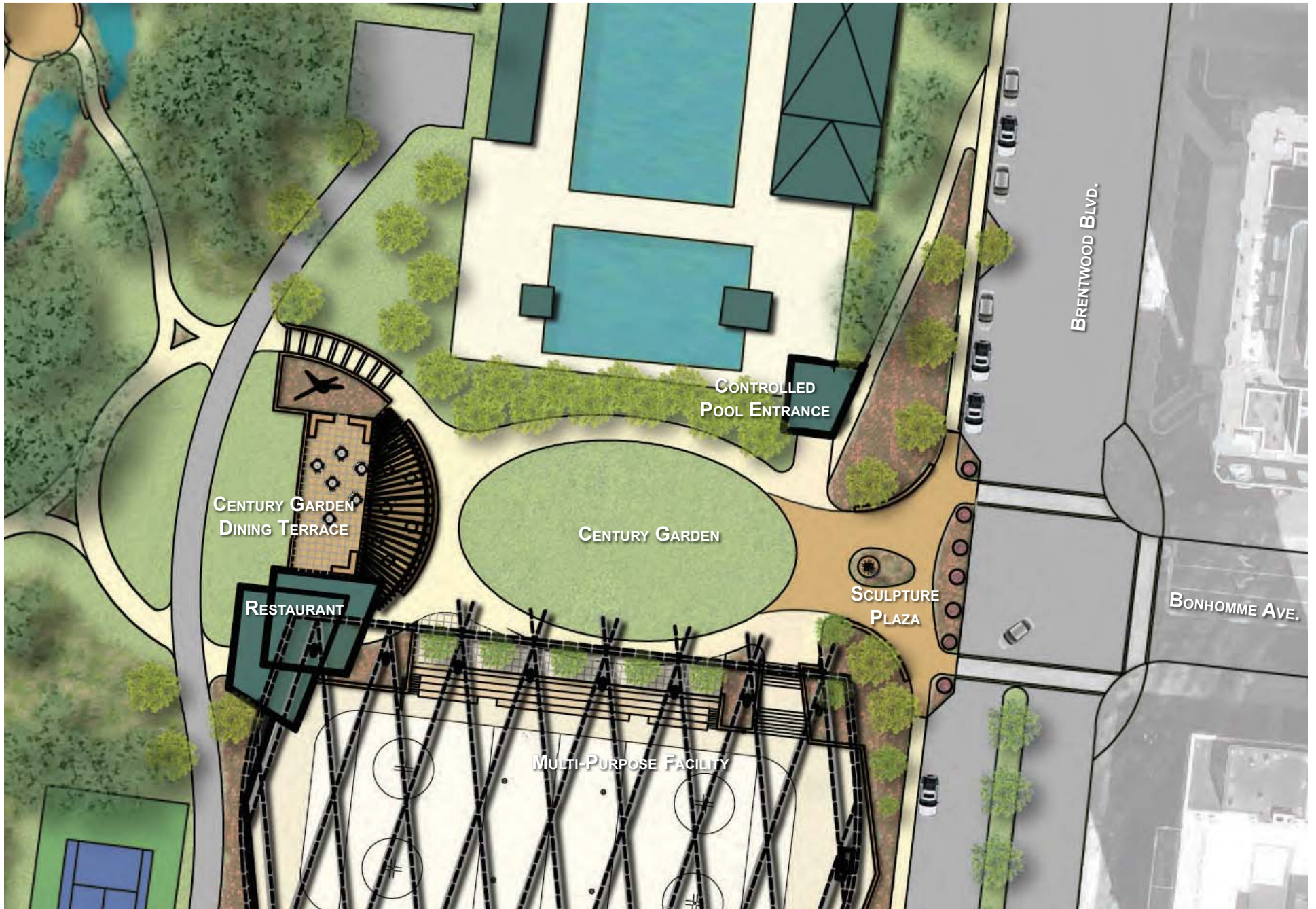
Fountain



Existing Plaza Site



Entry Plaza at Dusk



Century Garden Plan Enlargement

CENTURY GARDEN

The Century Garden is a formal event space and gathering plaza centrally located in the active recreation hub of the park between the new multi-purpose facility and the existing pool. Sculpture, gracious seating areas, shade trees, a central lawn, and a dramatic vista into the park help create an inviting setting for guests. A concession or restaurant venue will anchor the space to attract visitors during all seasons of the year.

AMENITIES

- Pedestrian Friendly Entrance along Brentwood
- Improved Crosswalks and Medians
- Formal Event Lawn
- Dynamic Sculpture
- Comfortable Seating Options
- Terrace Views Into Ice Rink and Park
- Shaded Paths
- Connectivity Between all Recreation Facilities
- Dining and Refreshments
- New Controlled Pool Entrance
- Public Art
- Additional Parking along Brentwood
- Wi-Fi Zone
- Standard Streetscape and Site Furnishings



Formal Event Lawn



Restaurant / Cafe



Public Art



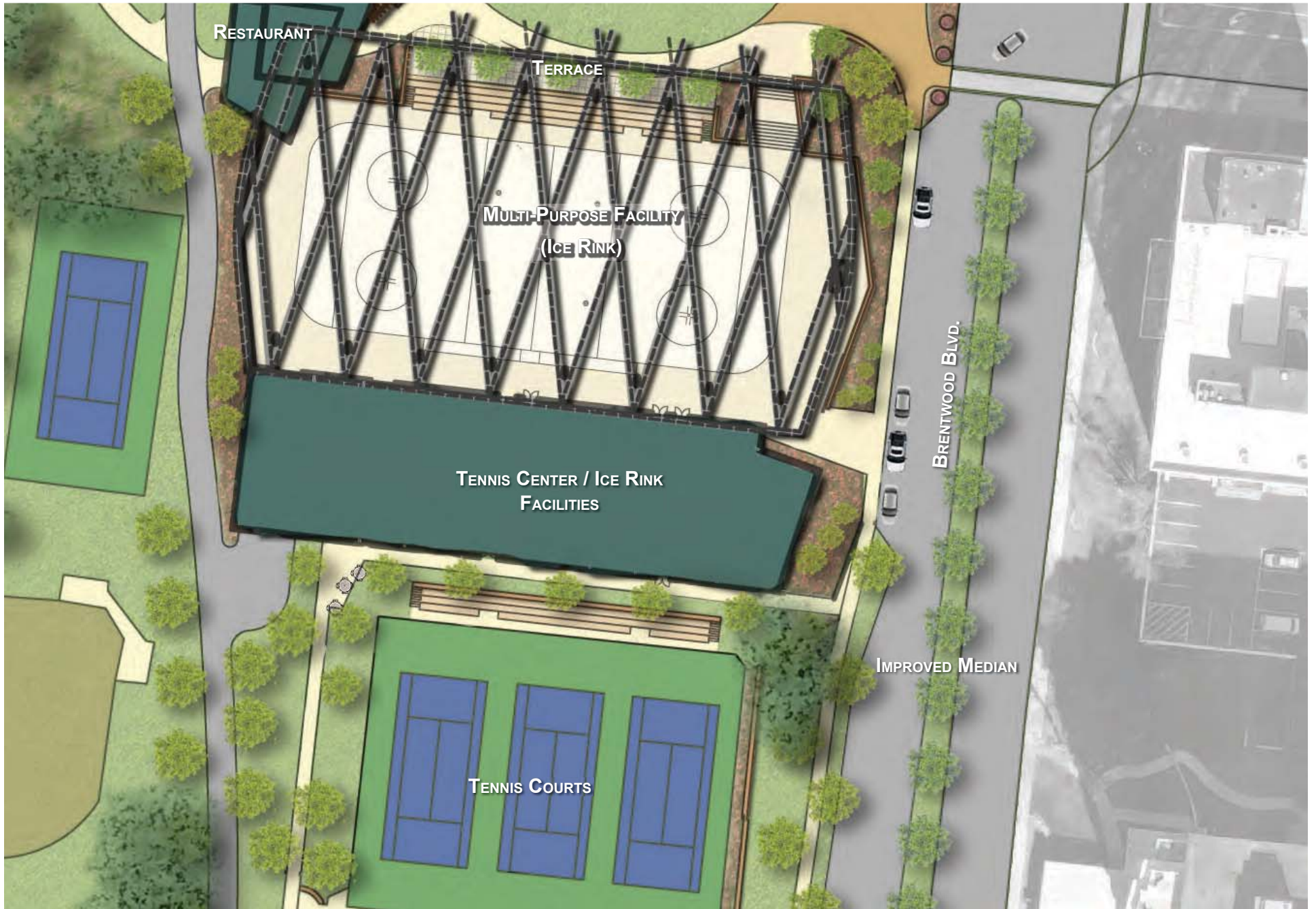
Seating Terrace



Existing Sculpture
Molecular Bloom with Single Flower
by James Surls



View from Dining Terrace back to Brentwood



Multi-Purpose Facility Plan Enlargement

MULTI-PURPOSE FACILITY

A state-of-the-art, multi-purpose facility is being planned to serve the park and community. The facility will tie seamlessly into the adjacent plaza spaces and park. It will support many active recreation programs and community events throughout the year. An architecturally significant shade structure will cover the outdoor space, helping to lengthen sporting seasons and create a more comfortable atmosphere. An adjacent support building will house locker rooms, restrooms, party rooms, maintenance, storage, and office space for the multi-purpose facility as well as the tennis courts.

AMENITIES

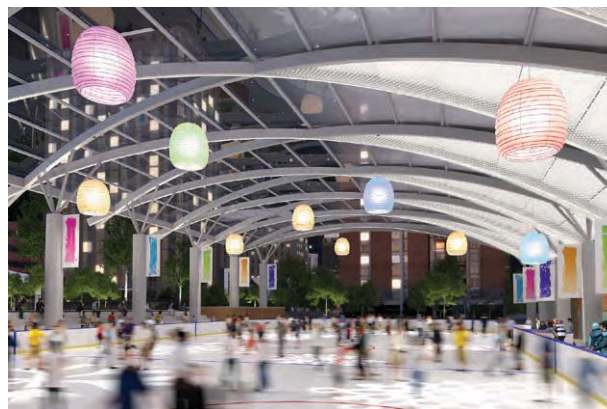
- Year Round Use
- Multi-Purpose Field
- Multi-Functional Support Building
- State-of-the-Art Equipment
- Accessible Entry
- Ideal Field/Ice Alignment
- Concessions
- Convenient Layby Parking Areas for Pick-up and Drop-off
- Visual and Physical Connection to Adjacent Plaza
- Scenic Views of the Park
- Fire Pit



Multi-Purpose Facility Rendering by Jacobs Engineering



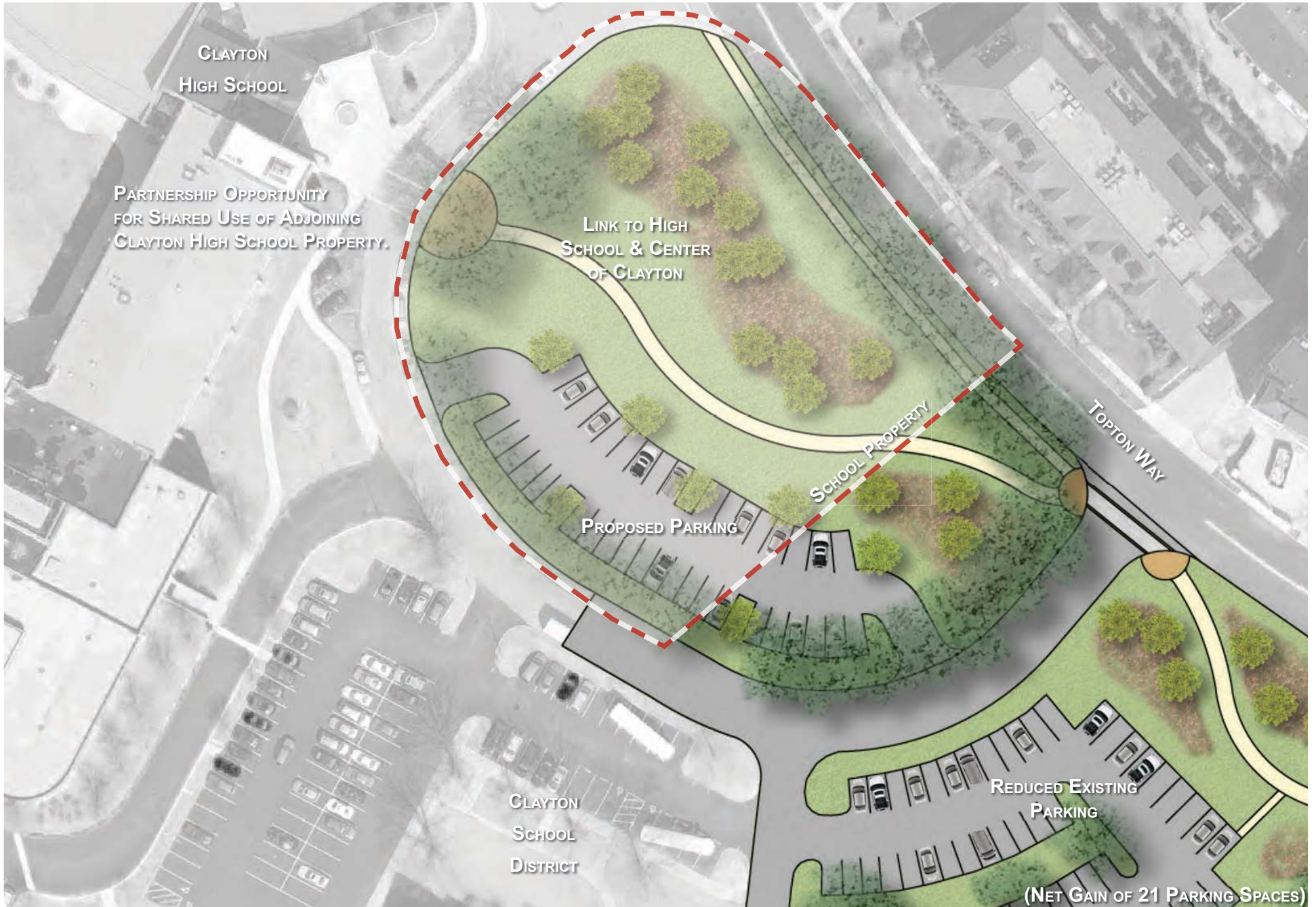
Multi-Purpose Facility Rendering by Jacobs Engineering



Multi-Purpose Facility Rendering by Jacobs Engineering



Conceptual Precedent - Millennium Park, Chicago



The Link Plan Enlargement

THE LINK

The under-utilized green space near Clayton High School is converted into an “extension” of the park with improved parking facilities, expanded green space, and pedestrian connectivity. A partnership between the City and the School District would allow the park to “visually” extend and provide improved pedestrian connections to the park, The Center of Clayton, and Clayton High School. This partnership would allow the City to utilize School District property to create a link to the park. Pedestrian nodes at intersections and park edges provide a place to gather and enter the park. These areas provide a location for directional and informative signage at the park perimeter.

AMENITIES

- Pedestrian Oriented Sidewalks and Buffer Areas
- Pedestrian Nodes
- Improved Pedestrian Crossings
- Additional Parking
- Expanded Green Space
- Sculpture
- Landforms / Bermed Seating
- Enhanced Link to the Park



Landforms / Buffer Areas



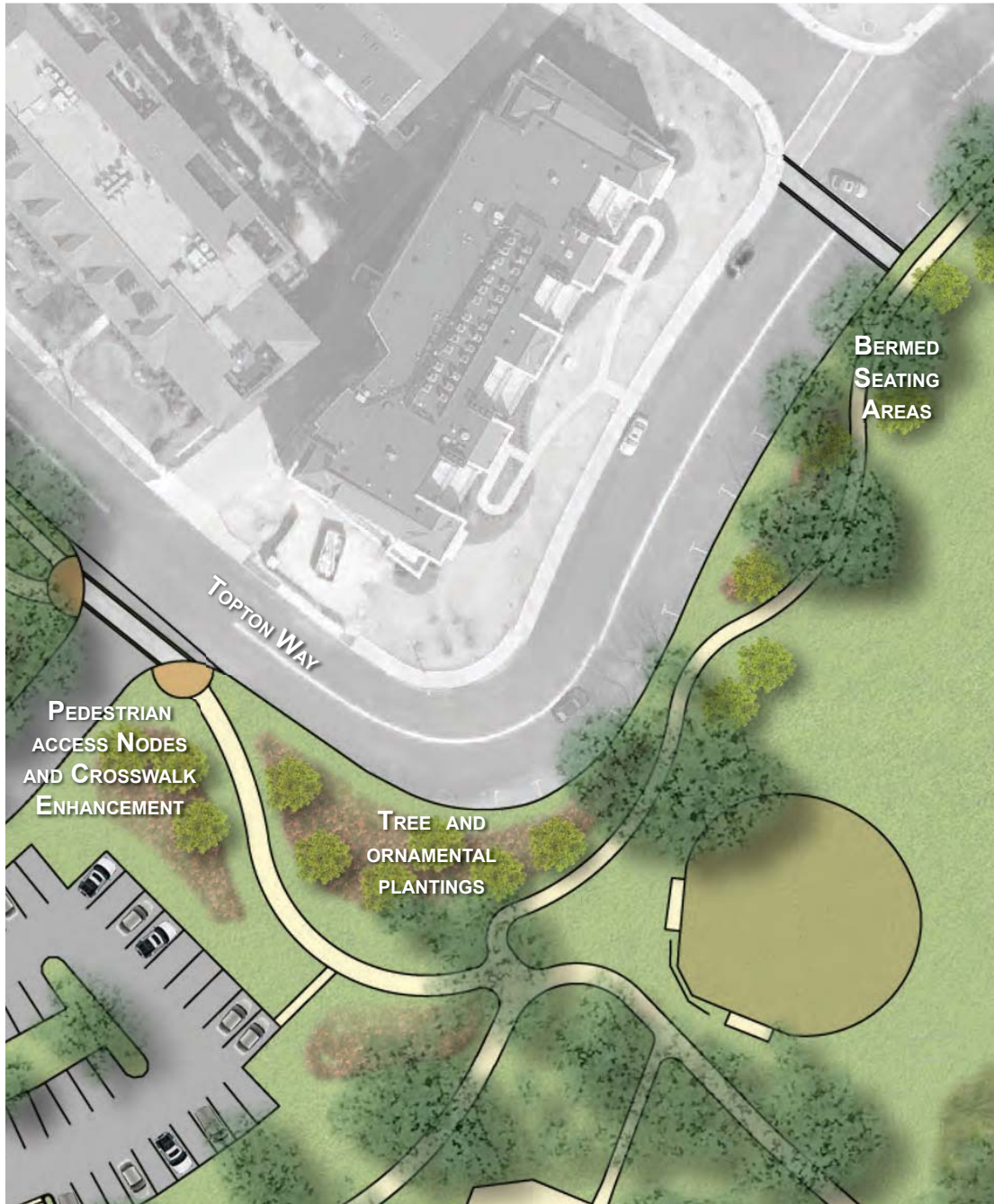
Meandering Path



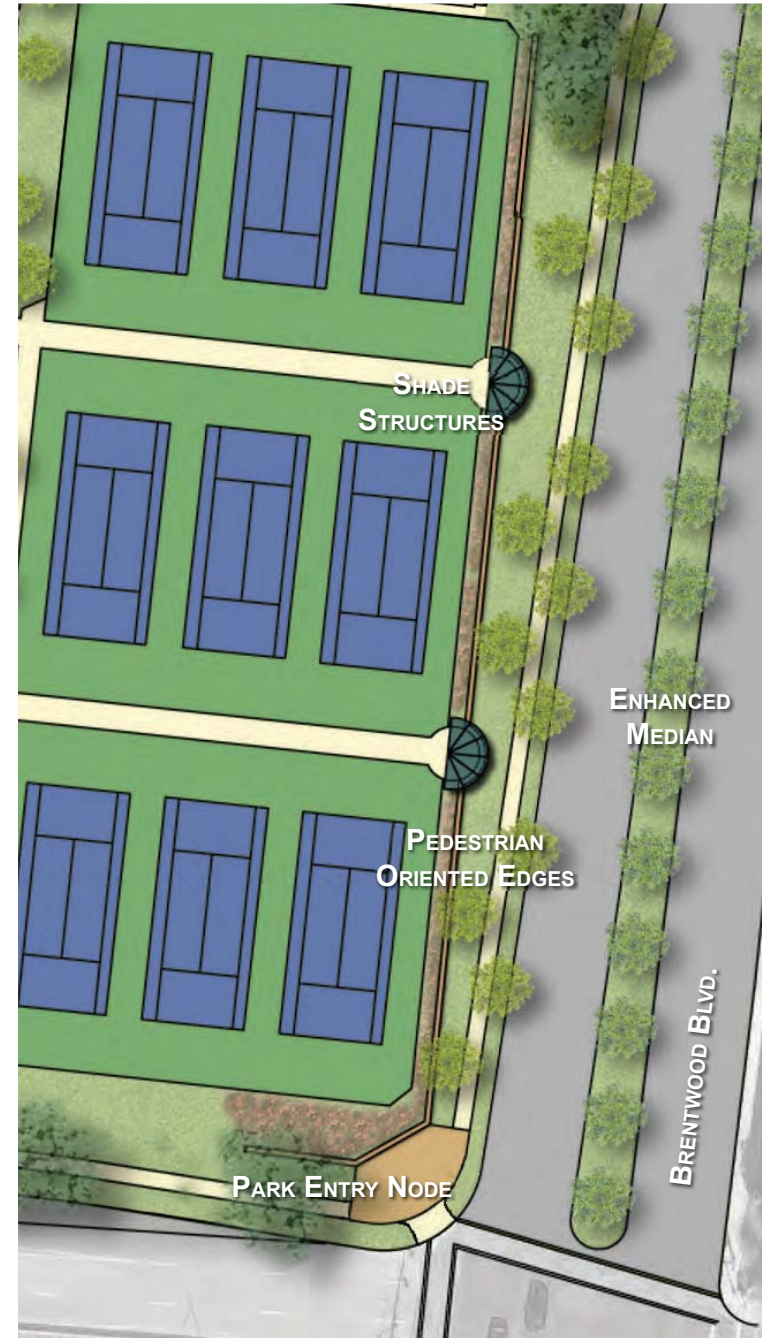
Bermed Seating



Sculpture



Park Edge at Topton Way Plan Enlargement



Brentwood Edge and Tennis Center Plan Enlargement

PARK EDGE IMPROVEMENTS

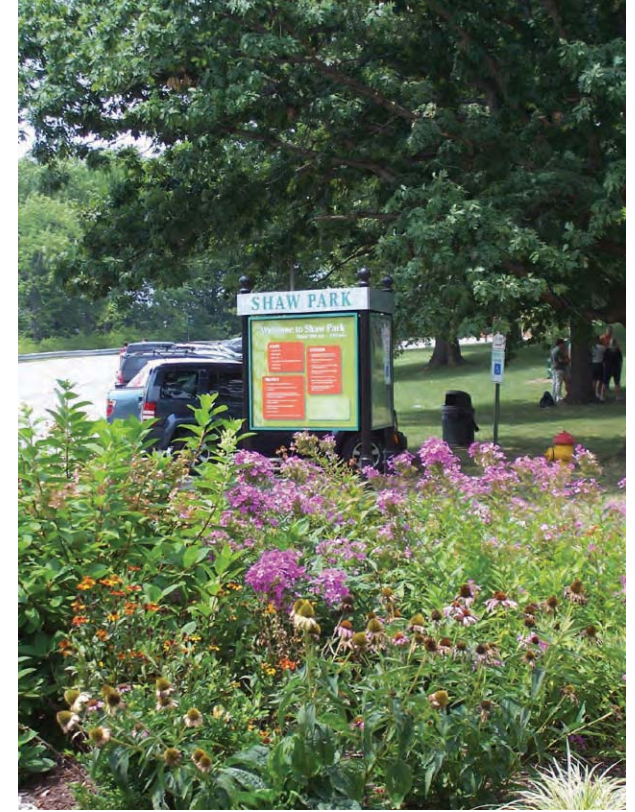
Park edges are improved to be welcoming to visitors, help delineate the park boundary, and provide a comfortable, safe pedestrian environment. A parkway strip added where possible, provides a comfortable buffer between pedestrians and automobiles. Enhanced medians along Brentwood Blvd. help calm traffic and provide zones of refuge for pedestrians crossing the street into the park. Improved signage, lighting, street furnishings, and uniform tree plantings will visually enhance the park edge.

AMENITIES

- Ornamental Plantings Define Park Edges
- Pedestrian Oriented Sidewalks and Parkway Strips
- Pedestrian Friendly Entries
- Enhanced Crosswalks and Medians
- Standard Streetscape and Site Furnishings
- Entry Signage
- Landscape Median on Brentwood Boulevard



Sidewalks with Pedestrian Oriented Plantings



Existing Informational Kiosk



Existing Tennis Courts



Street Crossing Enhancements for Pedestrian Safety



Promenade and Strolling Garden Plan Enlargement

POND AND WATER FEATURE

A stream-like water feature, or vegetated swale, flanks the promenade and strolling garden to create a gardenesque setting from the north end to the south end of the park.

AMENITIES

- Storm Water Management and Improved Water Quality
- Educational and Interpretive Opportunities
- Habitat diversity



Educational / Interpretive Signage



Formal Water's Edge Plantings

PROMENADE AND STROLLING GARDEN

By formalizing the treatment of the existing walking path in the heart of the park, a “spine” is created to link and unify amenities. Seating opportunities, pedestrian scale lighting, decorative benches and trash receptacles, line the walk and add an element of continuity and comfort.

AMENITIES

- Varied, Comfortable Seating Nodes
- Ornamental Plantings
- Standard Site Furnishings
- Connector Nodes at North and South Ends of Promenade
- Pedestrian Scale Lighting Along Paths



Pedestrian Bridge over Vegetated Swale



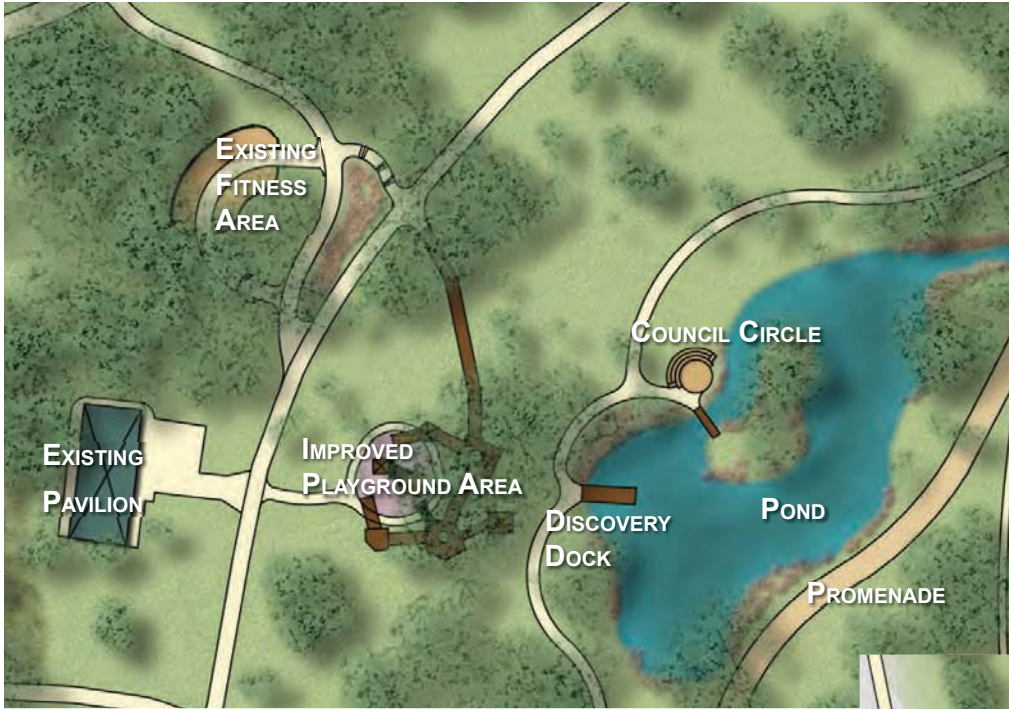
Promenade Seating



Outdoor Chess Tables



View of Promenade and Stream at Gathering Node



Improved Playground Area Plan Enlargement



South Parking Area Plan Enlargement

SOUTH PARKING AND PICNIC HILL

The existing south parking lot is open, expansive and not pedestrian friendly. Improvements make it more comfortable, easier to navigate, and more aesthetically pleasing. A picnic area allows for informal seating in a natural setting. Stones set into the hillsides of the open picnic lawn create a comfortable place to picnic and hold small informal gatherings. The stones also take on an artistic and sculptural quality within the landscape and create definition to the space separating it from the native plantings of the woodland meadow.

Finally, where slopes are steep and hard to maintain, native plantings will be introduced to provide a low maintenance ground cover and stabilize the slopes. These areas also provide habitat for animals and pollinators creating interest for naturalists and bird watchers.

AMENITIES

- Green space and Shade Trees Added to Parking Lot
- Picnic Seating
- Animal and Pollinator Habitat
- Reduced Mowing with Low Maintenance Native Areas
- Slope Stabilization
- Informal Amphitheater
- Improved Buffer Plantings



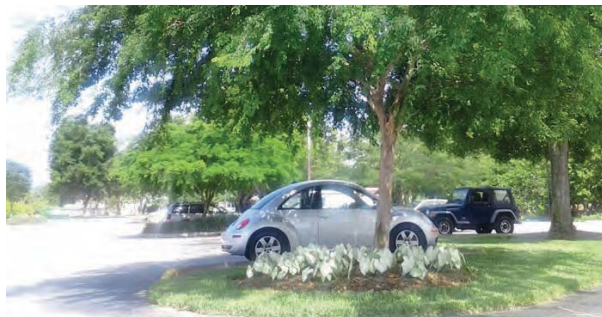
Native Hillside Plantings



Council Circle



Wi-Fi Access



Parking Area Planting Enhancements



Informal Hillside Seating

IMPROVED PLAYGROUND AREA

The improved playground area provides teens with a setting for adventure, active recreation, and socialization. It provides a place “just for teens” that is unique and fun. Hammocks and Wi-Fi will appeal to kids wanting to relax. A treetop canopy walk and net climber will allow kids to stretch their muscles and test their strength. Also an outdoor classroom and discovery dock provide great opportunities for group meetings in a park setting. For safety the area can be easily monitored from the adjacent trails and parking area.

AMENITIES

- Tree Canopy Walk
- Wi-Fi Zone
- Adventure Play Structure
- Hammocks
- ADA Accessibility
- Outdoor Classroom / Council Circle
- Discovery Dock at Lake Edge
- Highly Visible Location