



FINAL DRAFT

SHAW PARK

MASTER PLAN OVERLAY | CLAYTON, MO



SHAW PARK MASTER PLAN OVERLAY

SEPTEMBER 2013

CONTENTS

OVERLAY PLAN CONTEXT	3
OVERLAY PLAN RECOMMENDATIONS	17
OVERLAY PLAN GUIDELINES & IMPLEMENTATION	37

ACKNOWLEDGEMENTS

The Shaw Park Master Plan Overlay was funded by a generous gift from the Clayton Century Foundation.

A special thanks to all committee members, board members, residents, business owners, and Clayton City staff members for their support and successful participation.

STEERING COMMITTEE

Mimi Deem
Patty DeForrest
Gary Feder
Marguerite Garrick
Susan Istenes
Craig Owens
Susan Renard
John Wulf

VISIONING COMMITTEE

Jason Braidwood
James Castellano
Robert Chapman
Patty DeForrest
Gary Feder
Linda Goldstein (Past Mayor)
Mont Levy
Jim Mann
Diane Olsterholt
Craig Owens

PARK AND RECREATION COMMISSION

Ira Berkowitz
Brad Bernstein
Mimi Deem
Marguerite Garrick
Laurel Harrington
Michelle Harris
Darryl Higuchi
Andrea Maddox-Dallas
Eric Schneider
Mark Stapelton
Melanie Tamsky

BOARD OF ALDERMAN

Andrea Maddox-Dallas
Joanne Boulton
Michelle Harris
Cynthia Garnholz
Mark Winings
Alex Berger III

MAYOR

Harold Sanger

OVERLAY PLAN CONTEXT

CHAPTER ONE

With the development of the Shaw Park Master Plan Overlay, the City of Clayton has embarked upon a transformative journey to improve Shaw Park, an already treasured asset of the community. The strong relationship between the Clayton Century Foundation and the City of Clayton generated an invaluable opportunity to improve Shaw Park. The possibility of new and improved public-private partnerships led to the development of this plan and has provided a new perspective on the future of Shaw Park. This plan expresses the City and Century Foundation's desire to create a one of a kind park. It reflects the City's distinctive style and invites residents and downtown Clayton users to take part in a community experience that serves to connect, engage, and delight people of all ages.

The overlay plan utilizes several previously established elements as the foundation for its development: the existing conditions of the park, the 2007 park master plan, and the 2010 updated master plan. It blends these plans while elevating the potential of the park to new heights.



MASTER PLAN OVERLAY

CURRENT MASTER PLAN
(2007 + 2010 UPDATE)

EXISTING PARK

PLAN VISION

It is the vision of the City of Clayton and the Clayton Century Foundation that the master plan overlay be developed to:

- Ensure that the recreational needs of the community are met while developing a one of a kind park reflecting the City’s distinctive style
- Create a framework for development that will lead to the successful implementation of the master plan and long term maintenance and operations of the park
- Create guidelines for plan implementation that lead to sustainable advancements in citizen well-being, park ecology, and economic development

PLAN GOALS

The City staff and project steering committee developed a set of goals for the project that helped ensure the master plan overlay meets the vision for Shaw Park now and in the future.

Goal One: Improve Park Systems

Because Shaw Park currently functions well as a community park, this plan seeks only to improve on existing systems and networks that already exist in the park:

- Improve pedestrian access throughout park
- Enhance vehicular circulation and parking at perimeter of park
- Improve wayfinding systems
- Strengthen hydrological and ecological systems
- Enhance and create new park infrastructure
- Create more biodiversity

Goal Two: Improve Connectivity

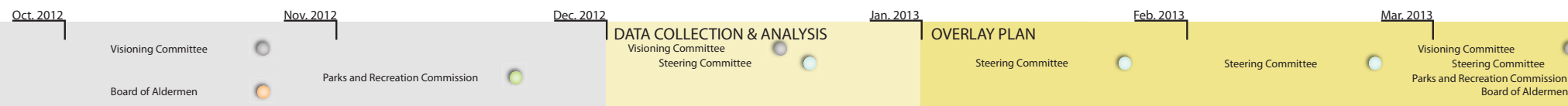
Shaw Park is an asset to the City of Clayton, Downtown Clayton, and the region. This plan seeks to improve the connections to the park, physically and visually, from downtown, City neighborhoods, and regional park and trail networks.

Goal Three: Develop Multi-purpose Improvements

In order to serve a variety of user groups and the general public, this plan seeks to develop multi-purpose facilities and amenities. That support varied program and educational opportunities and can be utilized throughout the year. This approach also allows the City to better manage recreational budgets and eliminate funding overlaps.

Goal Four: Enhance Aesthetics and Functionality using Sustainable, Maintainable Development

As a regional leader in sustainable development the City understands the need to conserve resources. This plan seeks to develop the park using the most economically, environmentally, and socially responsible methods.



Master Plan Overlay Schedule

PLAN PROCESS

City staff and the project steering committee created a five step process for development of the overlay plan.

Step One - Plan Initiation

- Confirm Vision, Goals, Process and Schedule
- Establish Steering Committee

Step Two - Data Collection and Analysis

- Data Collection and Analysis of Park
- Analyze Past Plans and Studies
- Analyze Opportunities and Constraints
- Review Current Management Strategies and Programming
- Review Current Budgets

Step Three - Plan Overlay

- Recommendations
- Compile Draft Master Plan and Fundraising Graphics
- Establish Phasing and Prioritization
- Presentation to stakeholders
- Adoption of plan by Aldermen

Step Four - Policy Overlay

- Develop Implementation Strategy
- Develop Design Guidelines

Step Five - Plan Implementation

- Establish Subset of Parks and Recreation Commission to Oversee Implementation

STEERING & VISIONING COMMITTEES

The steering committee was formed to guide the design team during planning. Meetings with the steering committee were held regularly throughout the process to ensure the team stayed focused on the vision, goals, and feasibility of the project.

The visioning committee helped to inspire design innovation. The design team met with the visioning committee on several occasions to explore the opportunities for public/private partnerships that could lead to levels of design beyond the city's means.

DATA COLLECTION AND ANALYSIS

In the initial stages of the planning process, existing base maps, surveys, and aerial photographs of the park were studied in order to better understand the parks current condition of the park. The design team conducted several walking tours of the park to view, photograph, and inventory existing conditions. Past plans for the park were also evaluated for continuity and clarity. The park's programming, functions, amenities, natural features, hydrology, and topography were evaluated for opportunities and constraints impacting park improvements.

The following pages capture the baseline data that was studied and utilized to guide the city, steering committee, and design team as they considered design options for the park.



STAKEHOLDER INPUT

Stakeholder input was important throughout the planning process. The design team relied on City staff, the steering committee, the visioning committee, the Parks and Recreation Commission, the Board of Aldermen, and the public for guidance and assistance. The design team held numerous meetings to gain input and seek direction on the progress of the plan.

A public open house was held at The Center of Clayton in order to get input from the general public on the concepts included in the master plan overlay. Concept plans and imagery were displayed for review and feedback was solicited verbally and in writing. A public survey was developed and feedback was recorded.

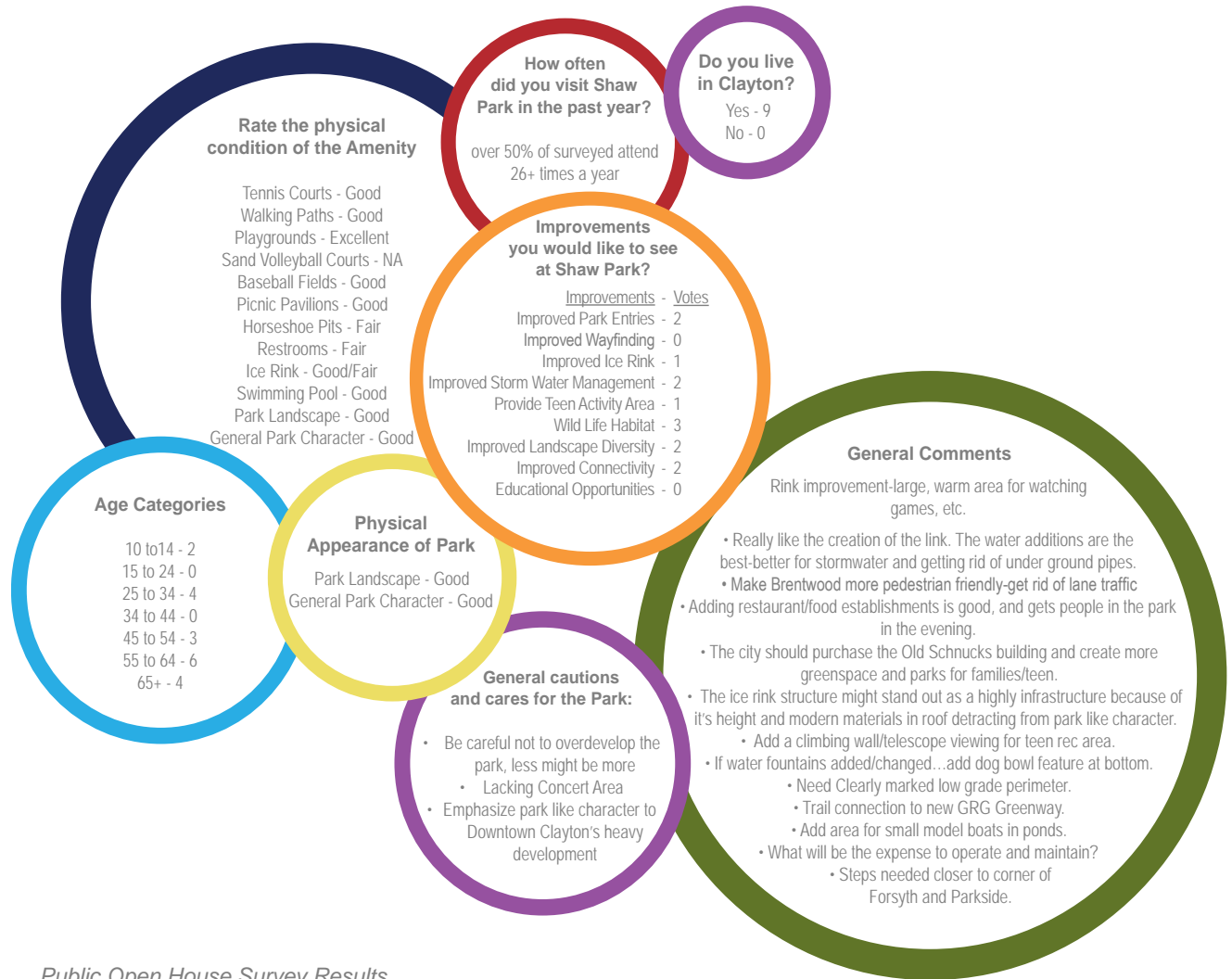
IMPORTANT OPEN HOUSE CONCEPTS

The open house was planned to help the public understand current issues facing the park, ways the plan would address those issues, and to define the impact of the master plan overlay on the park's existing form, character, and function.

Hydrology, connectivity, and open space were among the critical issues addressed at the open house.

Hydrology

Stormwater is critical for the park as development in the city and region increase. Because development of buildings, roads, parking lots, and open lawns leads to increased runoff, storm sewers were created to quickly drain water away from public areas. This technique interferes with the natural cycle of precipitation and infiltration. This has led to, and continues to contribute to, soil erosion, poor water quality, and limited water resources. The overlay master plan contains strategies to address stormwater and water quality in a manner that is safe and more closely follows the natural cycle of water.



Public Open House Survey Results

The design team also met with City staff to evaluate current conditions of the park, study current levels of programming in the park, and evaluate current levels of maintenance and care within the park.

PROGRAMMING AND REVENUE

Currently, Shaw Park is highly utilized by residents and visitors for passive and active recreation. Varied park amenities draw thousands of park guests annually and add to the City's revenue stream. Following is a list of park facilities, tallies of their annual attendance, and their annual revenue (when available). The City staff, steering committee, and design team utilized the information below to inform their decisions about the modification and improvement of existing park facilities.

Shaw Park Ice Rink:

- More than 11,000 visitors annually
- Over \$78,000 average annual revenue
- Features:
 - Ice Hockey
 - Skating Lessons
 - Special Events (New Years Eve, Etc)
 - Open Skate

Shaw Park Aquatic Center:

- More than 90,000 visitors annually
- Over \$330,000 average annual revenue
- Features:
 - Swim Lessons
 - Special Events (4th of July, Family Days)
 - Local Team Practice Facility
 - Lap Swim

Shaw Park Pavilions and Picnic Sites:

- More than 13,000 visitors annually
- Over \$29,000 average annual revenue
- Features:
 - Special Events
 - Facility Rental
 - Playgrounds
 - Inclusive Play
 - Sensory Garden
 - Sprayground

Shaw Park Sports Fields & Tennis Facilities:

- More than 87,000 visitors annually
- Field Features:
 - Adult Softball League
 - Youth Baseball/Softball League
 - Adult Soccer League
 - Youth Soccer League
 - Clayton High School Team Usage
- Tennis Center Features:
 - Lessons Special Events
 - Clayton High School Team Usage
 - Open Play
 - Adult League

Shaw Park Trails & Passive Use:

- More than 63,000 visitors annually
- Features:
 - Special Events (Egg Hunt, Party in the Patch, Etc.)
 - Boot Camp

The recommendations of the master plan overlay do not impact the existing revenue streams generated in Shaw Park and could potentially provide new revenue generating possibilities. Proposed park amenities and facilities will need to be studied in depth in order to accurately identify direct and indirect revenue sources that may be derived from the park improvements and potential programs.

2007 Task Force Vision:

The 2007 Ice Rink Task Force has stated that the *“site shall be a unique, year-round multi-purpose destination that serves athletic, leisure, recreational and wellness needs and enhances the Clayton community.”*



LAND USE

This diagram identifies the different basic uses of land within the park, their relative distribution, and the amount of area allocated for each use.

Land Use Breakdown:

- Total park area is approximately 47.5 acres.
- Over half of the park's total area, 25.6 acres, is allocated to informal or unprogrammed space. That space includes open lawn, pathways, and small picnic areas.
- Another 11.1 acres of the park are devoted to open recreation fields.
- In total roughly 75% of Shaw Park is comprised of open space.
- The remainder of the park is broken out into more active and structured uses such as pool facilities, tennis center, and parking areas.

It is understood that the park is currently well liked, highly utilized, and quite active throughout the year. Consideration should be made for maintaining the current balance of programmed and unprogrammed spaces, recreation areas, playgrounds, and gathering spaces. Accessibility to the park could be improved as parking and driving within the park is limited.



TREE CANOPY COVER

This diagrammatic analysis drawing was produced from aerial photography of Shaw Park in order to better understand the distribution of tree canopy cover within the park and quantify the amount of cover. Based on the analysis, roughly 35% of the park is covered by mature tree canopy and smaller size successional plantings are distributed throughout the park.

The tree canopy within Shaw Park is very evenly distributed. This provides even shade of park areas while allowing adequate light to reach the ground. This allows the maintenance of turf areas and planting, providing a bright, well lit park with good visibility for users. Canopy in the peripheral park areas begins to thin out and allows very good views into the park from surrounding roads and sidewalks.

Ongoing management of the parks tree population should strive to maintain the current level of cover within the park. Focus elements of this effort should include: improving the diversity of the tree species, providing for successional tree plantings, enhancing the seasonal interest, and creating additional habitat.



LANDSCAPE TYPOLOGY

Four major landscape typologies have been observed in Shaw Park. Lawn areas are by far the most prevalent typology. These areas can be further divided by other major features such as the presence of tree cover or the steepness of terrain. More formal landscape types within the park are adjacent to high use amenity areas and the park perimeter.

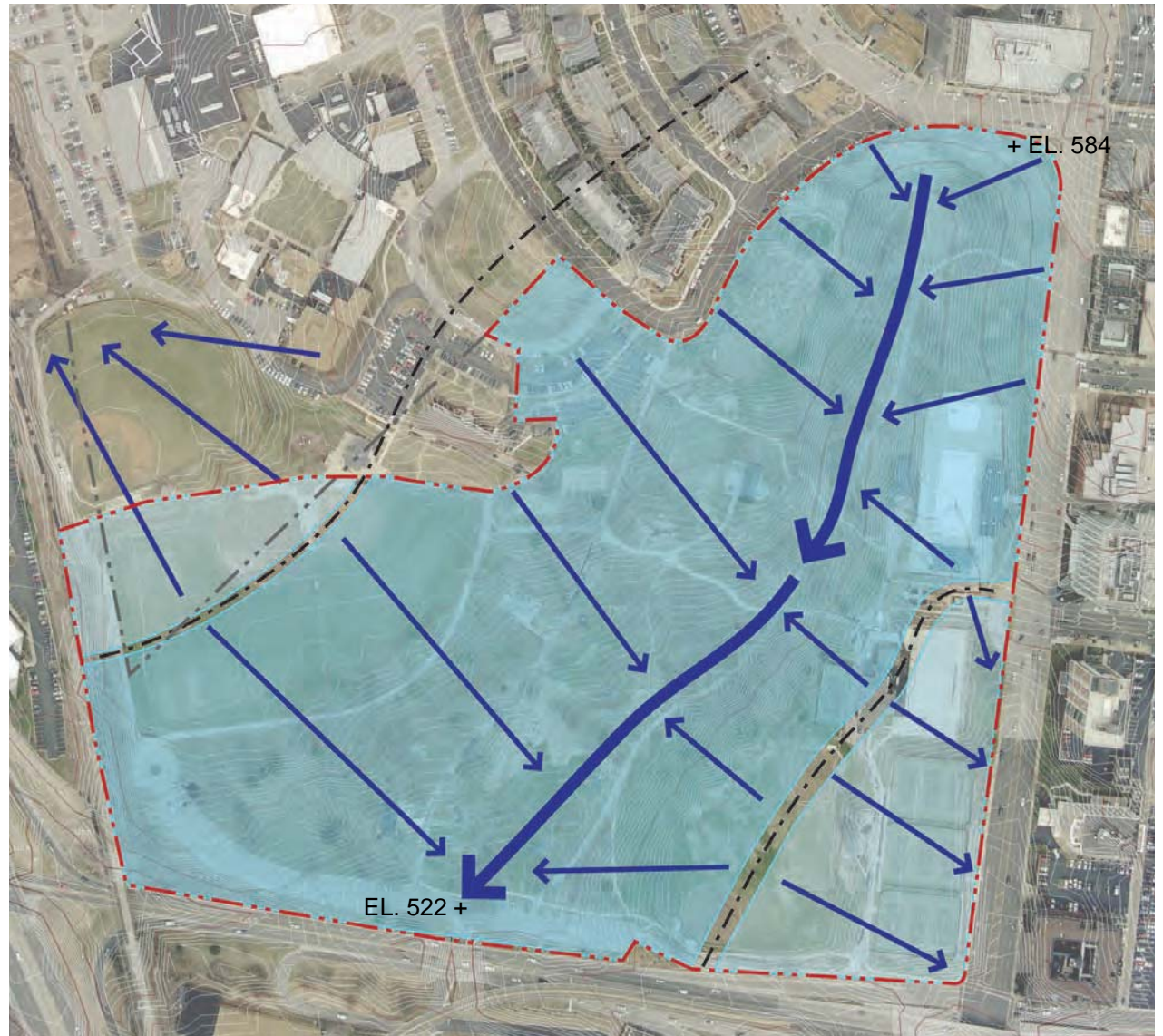
This analysis shows that there is opportunity for diversification of the landscape. Under utilized areas of turf monoculture, steeply sloped areas, and peripheral open space at the edges of the park are potential areas where landscape diversification could occur. Establishment of native plantings to reduce maintenance, mitigate stormwater, and provide habitat should be utilized whenever possible.



SITE HYDROLOGY

In an effort to better understand the movement of water on site, watersheds and drainage within Shaw Park have been mapped. In general, water flows toward the center of the park and then to the southwestern park boundary. A small portion of the park drains off the southeast corner of the site onto Brentwood Boulevard. Another small area flows toward the ball fields to the northwest next to the Center of Clayton property. The natural valley created by the park offers an opportunity to capture and treat much of the park's stormwater within the confines of the park boundaries.

Current park hydrology allows for the potential development of on site stormwater treatment and capture systems that are integrated into site amenities and can provide learning and interpretive opportunities for park users.



STORMWATER POTENTIAL FROM A 1" 24HR RAINFALL EVENT

2.6 Acres of Ball Fields Drains Off Site to the Northwest = 70,600 Gallons / 1" Rainfall Event

39.4 Acres, Main Park Drainage Area = 1,700,900 Gallons / 1" Rainfall Event

5.5 Acres of Park Drain Toward Brentwood = 149,300 Gallons / 1" Rainfall Event

IMPERVIOUS COVER

This analysis diagram shows an estimate of the current amount of impervious surfaces within Shaw Park and their relative distribution based on aerial photography. Roughly one third of the park is paved or otherwise impervious. The bulk of this area is comprised of buildings, sports facilities and the parking lots.

Impervious areas add to the amount of site runoff generated from a rainfall event. Presently most of this runoff water finds its way into the storm sewer system rather than being allowed to infiltrate into the ground within the park.

Shaw Park's expansive green spaces offer opportunity to address this stormwater by capturing the water on site or by treating and detaining it before leaving the site via the storm sewer system. These treatment areas can be incorporated into the parks landscape adding diversity and habitat enhancement to the park.

Additionally, future improvements to the park which add hardscape areas, or significantly alter existing areas, will be required by code to manage stormwater on site.



MANAGEMENT AND MAINTENANCE

In order to ensure success of the Shaw Park Master Plan Overlay and meet user expectations, modifications to existing maintenance practices must be made. New landscape types and new park amenities require different and expanded maintenance techniques. This change is a concern for parks maintenance staff. The City currently has eleven parks encompassing roughly 93 acres of land. The maintenance staff has a desire to preserve the current level of care they provide in all of the city's parks. The improvements in Shaw Park will require additional staff and equipment in order for the staff to sustain their quality of care throughout the system.

The current maintenance and management staff consists of 7 full time employees: a Superintendent, Supervisor, Horticulturist, Field Technician, and 3 General Staff members. During the summer, 6 to 8 part time staff members are hired for peak seasonal help. With shrinking City budgets, the staff is being asked to do more with less. Unless action is taken to upgrade the capabilities of the staff, the improvements in the master plan overlay will be compromised and problematic.

In order to perform the existing and proposed maintenance tasks related to landscape and site amenities to the level of care expected additional staff will need to be hired. Recommended staff types and job descriptions are listed below to help guide the City as they add to their maintenance staff in the future, should funding become available.

Naturalist (Full Time)

As park landscape types are diversified and as new native ecosystems are introduced, it will become extremely important to have an individual on staff that truly understands native ecosystems and the care it

takes to establish them. The naturalist could work in conjunction with the horticulture crews working throughout the park system as more sustainable landscapes are implemented

Horticulturist Staff (Full Time) 1 to 2 Positions

As areas of the park change from mown lawn to planting be they perennial, shrub, or woody material added technical skills will be necessary in order to take care of the park landscape. Individuals with horticultural training should be added to support the existing Horticulture staff. These horticulturists could work in Shaw Park and throughout the park system.

Maintenance Specialist (Full Time)

This individual could perform a variety of tasks including light carpentry, painting, mechanical, and other miscellaneous maintenance tasks. New facilities within the park will require specified attention that a landscape specialist cannot provide including: additional pavilions, decks, boardwalks, lighting, fountains, etc. This individual should be skilled in two or more trades and capable of moving from task to task. It is recommended that the maintenance specialist be focused on Shaw Park and only work outside the park if absolutely necessary.

It is recommended that the tools and equipment utilized for maintenance and management be audited in a further study. This should be done to identify current inadequacies or overages. Tools necessary for recommended staff should be identified and purchased to perform their respective duties. Additionally this overlay plan supports ongoing planning by the City's Ice Rink Task Force to create a new multi-purpose facility which may provide support and storage space for parks maintenance and management staff and equipment.

MAINTENANCE TASKS - CURRENT AND PROPOSED

Current maintenance practices for the park are included in the Parks Maintenance Schedule - City of Clayton Park Maintenance Work Procedure Manual, Reviewed: February 2012, and are shown on the facing page in blue. Recommended, new tasks are shown in yellow. New tasks do not include maintenance items related to the proposed multi-purpose building or support facilities, only the adjacent site landscape.





Overlay Master Plan