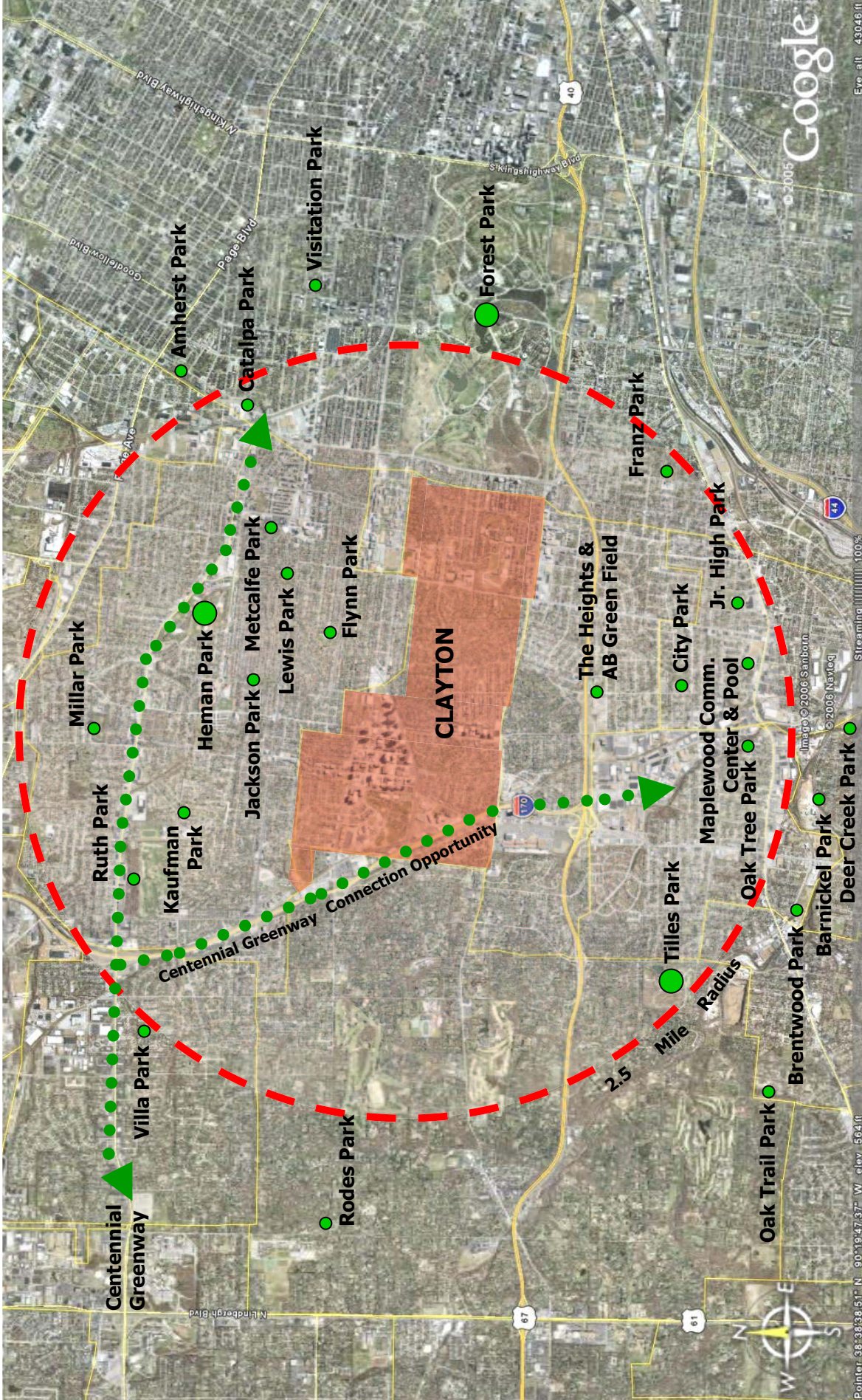


The maps for this document were prepared from a variety of sources. Maps representing parks and recreation facilities within the City of Clayton were created using the City of Clayton's GIS information and data from the Public Works Department.

Appendix B

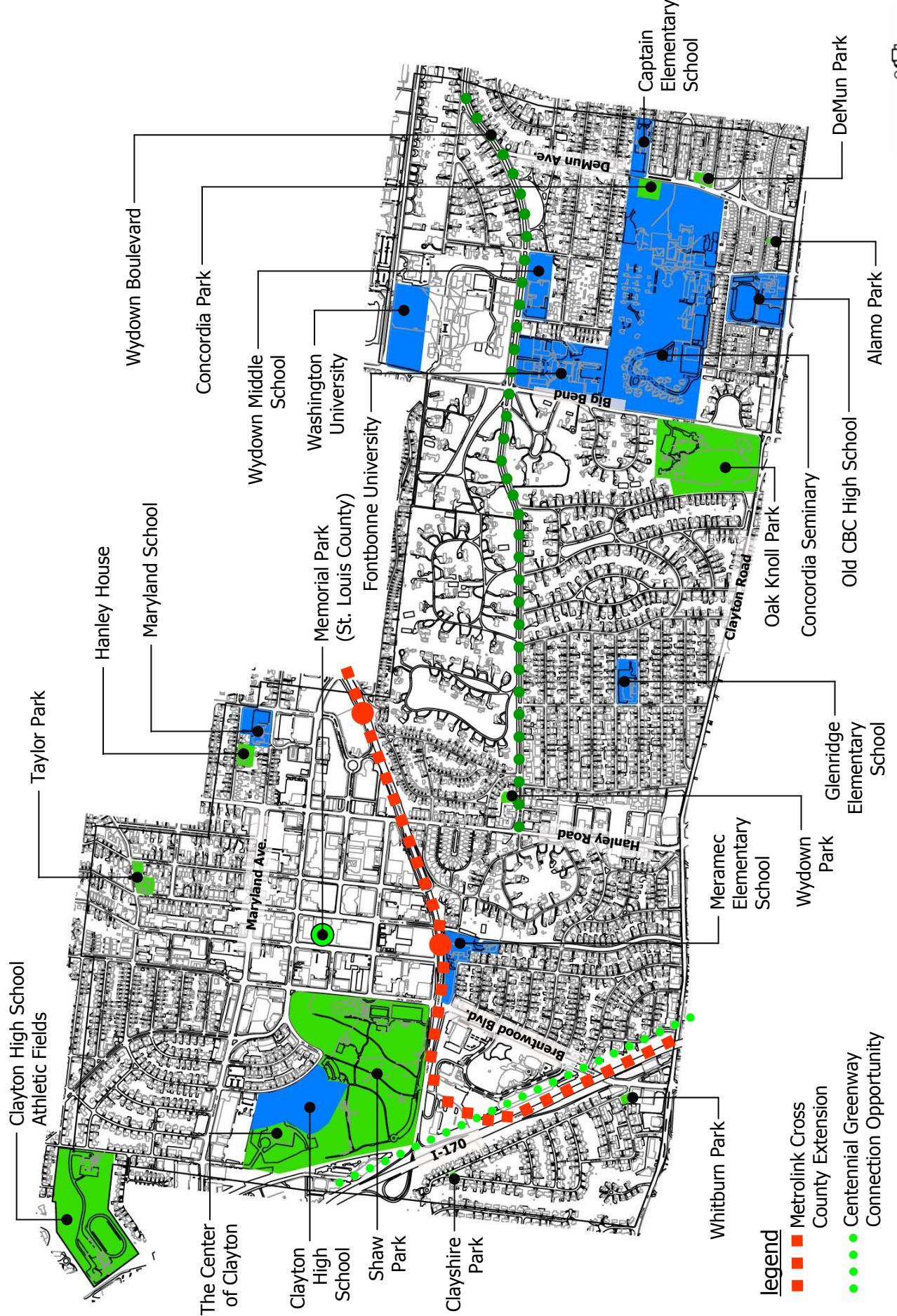
MAPS

Appendix B contains copies of the maps prepared for the Clayton Parks and Recreation Master Plan. Portions of these maps are included throughout the Master Plan document.



regional influencing factors map parks & recreation master plan





Clayton High School
Athletic Fields

The Center
of Clayton

Clayton
High
School

Shaw
Park

Clayshire
Park

Hanley House

Maryland School

Memorial Park
(St. Louis County)

Fontbonne University

Washington
University

Wydown Middle
School

Wydown Boulevard

Concordia Park

Brentwood Blvd

Hanley Road

Whitburn Park

Meramec
Elementary
School

Wydown
Park

Glenridge
Elementary
School

Clayton Road

Oak Knoll Park

Concordia Seminary

Old CBC High School

Big Bend

DeMun Ave

Captain
Elementary
School

Alamo Park

DeMun Park

- Legend**
- Metrolink Cross County Extension
 - Centennial Greenway Connection Opportunity

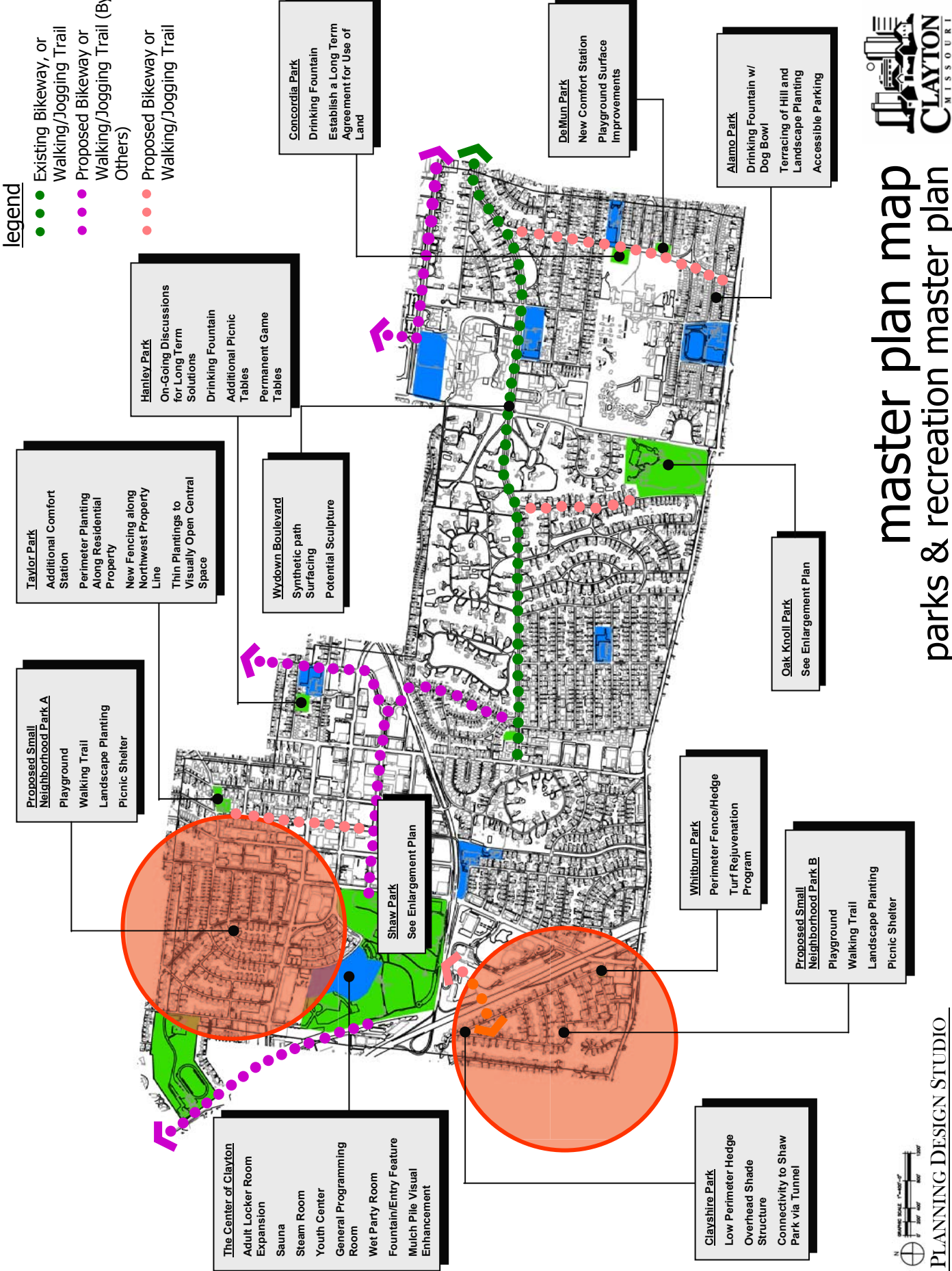


community influencing factors map parks & recreation master plan



legend

- Existing Bikeway, or Walking/Jogging Trail
- Proposed Bikeway or Walking/Jogging Trail (By Others)
- Proposed Bikeway or Walking/Jogging Trail



Proposed Small Neighborhood Park A
 Playground
 Walking Trail
 Landscape Planting
 Picnic Shelter

Taylor Park
 Additional Comfort Station
 Perimeter Planting Along Residential Property
 New Fencing along Northwest Property Line
 Thin Plantings to Visually Open Central Space

Hanley Park
 On-Going Discussions for Long Term Solutions
 Drinking Fountain
 Additional Picnic Tables
 Permanent Game Tables

Wydown Boulevard
 Synthetic path Surfacing
 Potential Sculpture

The Center of Clayton
 Adult Locker Room Expansion
 Sauna
 Steam Room
 Youth Center
 General Programming Room
 Wet Party Room
 Fountain/Entry Feature
 Mulch Pile Visual Enhancement

Shaw Park
 See Enlargement Plan

Concordia Park
 Drinking Fountain
 Establish a Long Term Agreement for Use of Land

DeMun Park
 New Comfort Station
 Playground Surface Improvements

Whitburn Park
 Perimeter Fence/Hedge
 Turf Rejuvenation Program

Proposed Small Neighborhood Park B
 Playground
 Walking Trail
 Landscape Planting
 Picnic Shelter

Clayshire Park
 Low Perimeter Hedge
 Overhead Shade Structure
 Connectivity to Shaw Park via Tunnel

Alamo Park
 Drinking Fountain w/ Dog Bowl
 Terracing of Hill and Landscape Planting
 Accessible Parking

Oak Knoll Park
 See Enlargement Plan



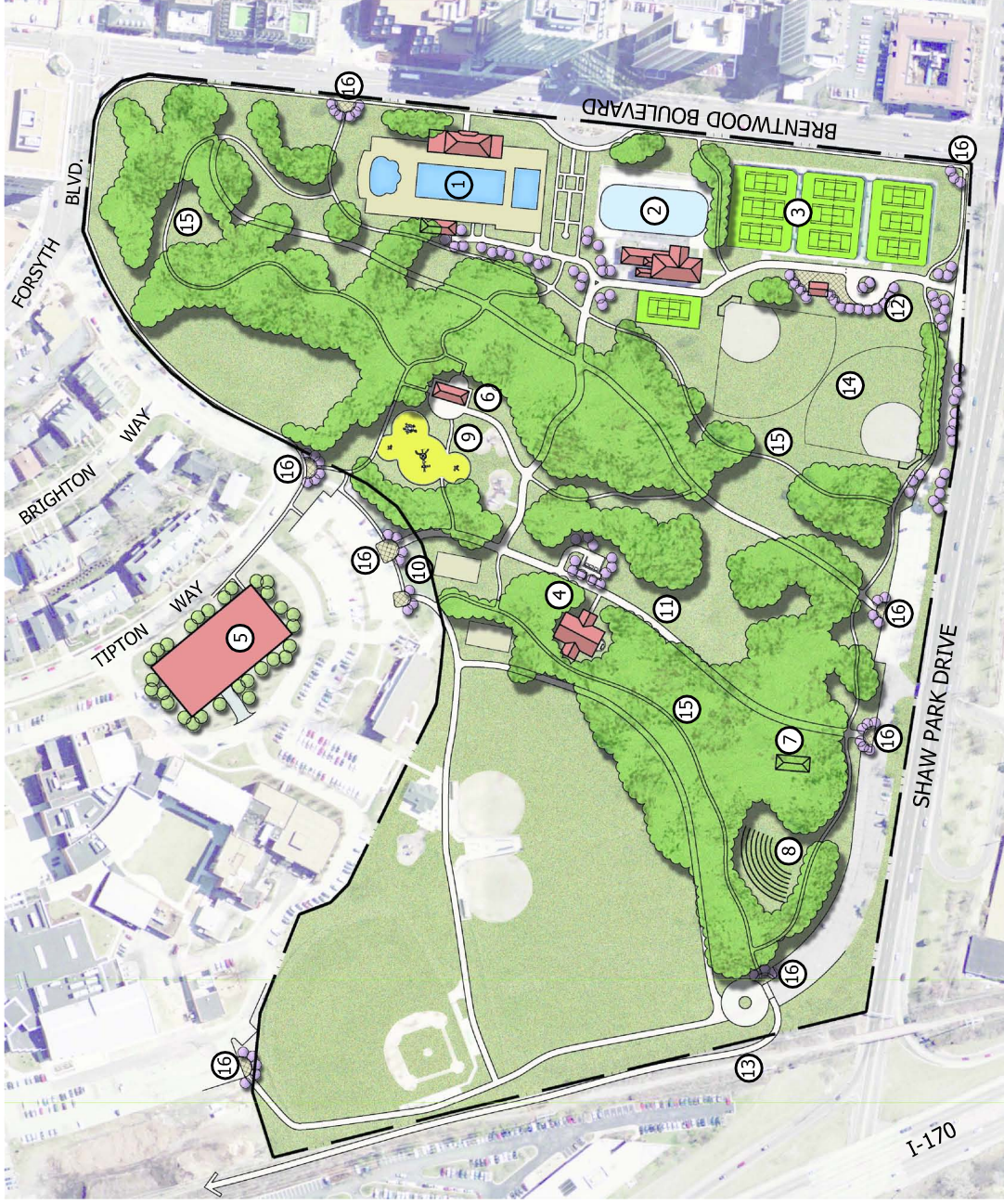
master plan map parks & recreation master plan

- ① Pond Picnic Pavilion and Stage Area Expansion/Improvements
- ② Alternate Picnic Pavilion Location
- ③ Renovate Existing Comfort Station
- ④ Playground Surface Improvements
- ⑤ Renovate Existing Paved Pathway System
- ⑥ Claverach Park Neighborhood Pedestrian Connection
- ⑦ Picnic Tables
- ⑧ Additional Perimeter Screening of Maintenance Area
- ⑨ Native Plant Garden



oak knoll park master plan

parks and recreation master plan



- ① Shaw Park Pool Improvements
 - A. Provide Additional Shade
 - ② Ice Rink Options
 - ③ Tennis Center and Court Improvements
 - ④ Permanent Corporate Pavilion
 - A. Comfort Station
 - B. Reconfiguration of Service Area
 - ⑤ Possible Structured Parking Location
 - ⑥ Existing Comfort Station/Pavilion to Remain
 - ⑦ Existing Comfort Station/Pavilion to Remain
 - ⑧ Amphitheatre
 - ⑨ Inclusion Playground
 - ⑩ Relocated Volleyball Courts
 - ⑪ Improve Park Service Roads
 - ⑫ Interior Turn Around/Drop-Off
 - ⑬ Connection to Centennial Greenway
 - ⑭ Lighting for Fields #1 and #2
 - ⑮ New Walking Trail with Signage System
 - ⑯ Park Entry Feature
- Other Items:
- A. New Pedestrian Park Lighting System
 - B. Understorey Vegetation Enhancement Plan
 - C. Screen Utility/Service Areas
 - D. Shaw Park Drive Landscape Enhancements

