

## Data Collection



WYDOWN PARK

### INTRODUCTION

The Clayton Parks and Recreation Master Plan was completed using information from a variety of sources. Among those sources were a Community Interest and Opinion Survey, Working Committee meetings, public forums, meetings with City officials and staff, citizen input, and various contributing reports. The information from these sources was compiled and reviewed to determine the recreational needs and desires of the people in Clayton. The Data Collection section presents the information gathered and sets the framework for the analysis of the needs and desires identified in the Plan Analysis section of this document.

### COMMUNITY PROFILE

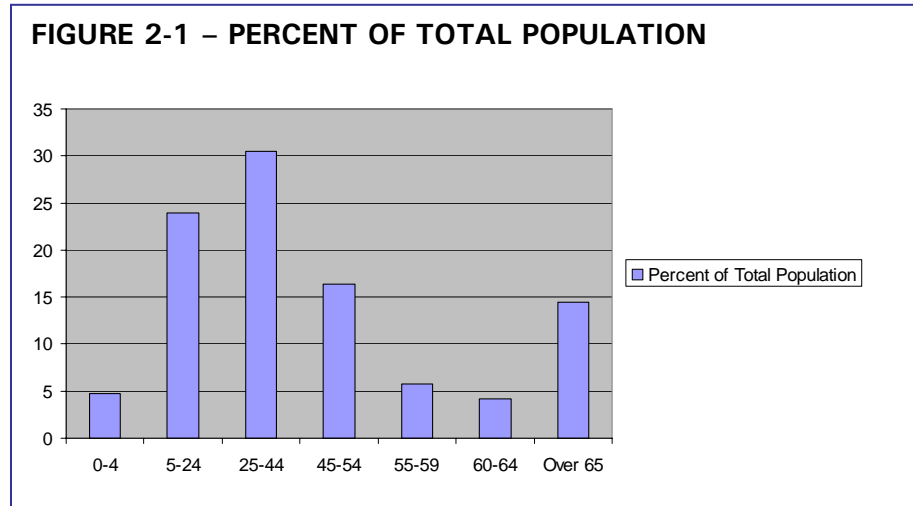
Every community is unique, and as such, needs to be addressed in a manner specific to its own personality. The following information presents a snapshot in time of Clayton and examines the traits that contribute to the vibrant character of the City. It also illustrates demands being placed upon Clayton by those wishing to become a part of the community.

### COMMUNITY IMAGE AND CHARACTER

Encompassing an area of two and a half square miles, in the center of the St. Louis metropolitan region, Clayton is a community which includes a vibrant business district and an outstanding housing mix. The central business district combines 7,000,000 square feet of prestigious office space with the vitality of 1,000,000 square feet of retail space. Also located in the heart of Clayton's business district is the St. Louis County Seat. Clayton's residential neighborhoods include stately single-family homes, condominiums and multi-family apartment dwellings. Several neighborhood retail districts provide close proximity to most of the City's residents. Supporting this thriving community is the highly acclaimed School District of Clayton and a park system including 80+ acres to passive and active park areas. The use of several facilities is shared between the school district and the Clayton Parks and Recreation Department, allowing the community to maximize the recreational opportunities it offers to its residents.

Clayton's one mile radius 2000 census population totaled 16,286. The one mile 2004 estimate was 16,770, which represents a 2.9% change. The 2009 population projection is 17,304 which represents 3.18% growth.

The age composition of Clayton's population is depicted in the following graph below.



Based on this information, the following conclusions can be drawn from these trends:

- Clayton’s overall population is not expected to change significantly in the future. However, higher density redevelopment may place additional demands on park resources.
- The population bulge in the 25-44 age group is significant and should be addressed when considering new recreation opportunities for the Clayton community. As the 25-44 age group matures, its future needs should be considered.
- The needs of a maturing population should be a significant consideration of the Clayton Park and Recreation System.

**COMMUNITY PARK FACILITIES/AMENITIES**

There are currently ten city parks that serve the recreational needs of Clayton residents. These parks include Clayshire Park, Alamo Park, DeMun Park, Whitburn Park, the Hanley House, Taylor Park, Wydown Park, Concordia Park, Oak Knoll Park, and Shaw Park. In addition, The Center of Clayton, the City’s joint use community recreation center, is located adjacent to Shaw Park. Refer to Figure 2-2 (Existing Community Park and Recreation Facilities/Amenities) for a listing of recreation opportunities in and near the Clayton community. For the purposes of clarity, a “facility” is defined as a building or structure whose primary purpose is recreation or recreation related activities. An “amenity” is a land based feature whose primary function is recreation or recreation related.

**FIGURE 2-2 – EXISTING COMMUNITY PARK AND RECREATION FACILITIES/AMENITIES**

<b>Clayton City Parks</b>	<b>Location</b>	<b>Recreation Facilities/Amenities</b>
Alamo Park	6400 Block of Alamo Ave.	Benches, Shade Garden
Clayshire Park	Francis Place and Langton Drive	Benches, Drinking Fountain
Concordia Park	Concordia Seminary Campus	Open Space, Benches, Picnic Tables
DeMun Park	DeMun and Southwood Avenues	Playgrounds, Walking Path, and Drinking Fountain
Hanley Park	7699 Westmoreland Ave.	Historic Home, Picnic Tables
Oak Knoll Park	Clayton Road and Big Bend Blvd.	Walking Path, Pond, St. Louis Artist Guild, Clayton Child Center, Playgrounds, Formal Garden, and Parking
Shaw Park	Brentwood and Forsyth Blvds	Aquatic Center, Ice Arena, Picnic Pavilions, Picnic Sites, Walking Trails, Athletic Fields, Tennis Courts, Playgrounds, Volleyball Courts, and Concessions Stand
Taylor Park	Kingsbury and North Central Avenues	Picnic Tables, Playground, Gazebo, Walking Path, Soldier’s Memorial
Whitburn Park	300 Block of York Street	Picnic Table, Benches, and Shade Garden
Wydown Park	Wydown Business District	Central Open Space, Plants of Merit Garden, Cafe Tables, Pergola
Concordia Park	Concordia Seminary Campus	Open Space, Benches, Picnic Tables
<b>Community Recreation Center</b>	<b>Location</b>	<b>Recreation Facilities/Amenities</b>
The Center of Clayton	50 Gay Avenue	Fitness Center, Indoor Track, Climbing Wall, Banquet and Meeting Rooms, Indoor Gymnasiums, Competition and Leisure Pools



**GLENRIDGE PLAYGROUND**

**SCHOOLS**

There are a number of schools that have outdoor recreational amenities within the city limits and are used by residents to satisfy their recreation demands. These facilities typically consist of playgrounds and sports fields. When not in demand by the school, some of the associated amenities are often made available for public use. Due to the location of these schools, they contribute recreation amenities to the community in areas where park amenities currently do not exist. The benefit of such facilities is that the City is not responsible for maintaining them, yet they help satisfy the recreation demands in the City. For purposes of denotation, each school that contributes recreation amenities for community use is indicated on the Community Influencing Factors Map (Figure 2-5) with a mini park service radius with the exception of Wydown Middle School which is shown with a Neighborhood Park

radius of 1 mile. Refer to Figure 2-3 (Existing Clayton School Outdoor Recreation Facilities/Amenities) for a listing of school related recreation opportunities in the Clayton community. Additionally, The Center of Clayton is a facility jointly shared between the School District of Clayton and the Parks and City of Clayton, which provides a significant amount of indoor recreation opportunities.

**FIGURE 2-3 – EXISTING CLAYTON SCHOOL OUTDOOR RECREATION FACILITIES/AMENITIES (PUBLIC & PRIVATE)**

<b>Clayton Area Schools</b>	<b>Location</b>	<b>Recreation Facilities</b>
The Family Center	301 N. Gay Avenue	Playground, track
Glenridge Elementary	7447 Wellington	Playground, Basketball Courts, Athletic Field
Captain Elementary	6345 Northwood Ave.	Playground, Outdoor Classroom, Basketball Courts
Maryland School	7501 Maryland Avenue	Playground, Athletic Field
Meramec Elementary	400 S. Meramec Avenue	Playground, Wooded Wildlife Center, Athletic Fields, Outdoor Classroom
Wydown Middle School	6500 Wydown Blvd.	Athletic Fields, Track, Basketball Courts
Clayton High School	#1 Mark Twain Circle	Athletic Fields, Track
Washington University	Forsyth and Big Bend Blvds	Athletic Fields, Track

*\*Facilities at Fontbonne College, Concordia Seminary, and Old CBC High School were reviewed as part of this study however, these facilities were not included in the listing above due to restricted public access.*

**OTHER FACILITIES**

Clayton is fortunate to be surrounded by communities that offer excellent recreation opportunities, some of which residents of Clayton use as a result of their close proximity. Within a 2.5 mile radius of the heart of Clayton, there are a total of approximately 1600 acres of regional and municipal park land and a total of approximately 130 acres of public school property. Forest Park, St. Louis’ premier park asset, is located adjacent to Clayton’s eastern limits. Under on-going renovation, it provides a wealth of diverse recreation and cultural events which are utilized by many Clayton residents.

**PRIVATE (NON-PUBLIC) RECREATION PROVIDERS**

There are numerous private (non-public) recreation providers in and around the Clayton area that contribute recreation facilities to the community. Because of high construction costs, limited special interest or infringement into the private sector market, the City continues to focus on the provision of recreation facilities that meet the demands of the majority of residents. Considering recreation demands on a regional scale and the presence of superior private sector facilities within the community necessitates that the City does not need to provide for every recreation demand. Each facility must be examined on an individual basis and weighed against the benefit the community will derive from such a facility before the City chooses to provide for a specific activity. Some examples of private recreation facilities in the Clayton area include facilities at the nearby Washington University, and Concordia Seminary, Wellbridge, and Bally Total Fitness Health Club.

## **SURROUNDING COMMUNITIES**

Clayton is bordered by four cities: St. Louis, University City, Ladue, and Richmond Heights. These communities also contribute recreation facilities and amenities that help satisfy the demands of Clayton residents. Many of the recreation facilities and amenities are provided through individual public parks and community centers, as well as through private recreation providers.

## **REGIONAL GREENWAY/TRAIL SYSTEMS**

The Great Rivers Greenway, formerly known as the Metropolitan Park and Recreation District, was established in November 2000 by the successful passage of the Clean Water, Safe Parks and Community Trails Initiative ("Proposition C") in St. Louis City, St. Louis County and St. Charles County, Missouri. Great Rivers Greenway is funded by a 1/10th of 1 cent sales tax. The Great Rivers Greenway is currently developing "The River Ring", a concept of interconnected greenways, parks and trails that link three counties, join two states, and cover an area of 1,216 square miles. This regional plan offers significant recreation opportunities to the Clayton community. The Centennial Greenway component of this greenway system will link St. Charles and St. Louis counties and the City of St. Louis. The route, while complex, is organized into three sub-sections; the Urban East, from Forest Park in St. Louis City to I-170 at the western edge of University City and Clayton; the Central Corridor through Olivette and unincorporated St. Louis County to Lindbergh Boulevard; and West County, from Lindbergh to Creve Coeur Park. The greenway will also connect to Clayton along Forsyth Boulevard near Washington University. Clayton is therefore in the enviable position to take advantage this regional greenway system.

### **THE CENTENNIAL GREENWAY**

*The Centennial Greenway was identified as an important regional greenway in The River Ring Master Plan. The name commemorates the 100<sup>th</sup> Anniversary of the 1904 World's Fair, which celebrated the Discovery Expedition by Lewis and Clark, in Forest Park, the 1904 Olympic Games, and the Centennial Anniversary of University City. The greenway is envisioned to be a fourteen mile system, passing through nine municipalities, connecting the citizens of Clayton, Creve Coeur, Maryland Heights, Olivette, Overland, University City, St. Louis City, and St. Louis County with two major parks in the region, Forest Park, and Creve Coeur Park.*

## **CITIZEN AND COMMUNITY INPUT**

### **Parks and Recreation Community Survey**

As part of the master planning process, ETC Institute conducted a Parks and Recreation Community Survey during the month of August 2006 to help determine parks and recreation priorities for the city. The survey was designed to obtain statistically valid results from a randomly selected sample of residents. While the survey and executive summary are a separate document, the results were reviewed, and the salient points which influenced the development of this plan included:

1. *Of the residents that have visited City of Clayton Parks during the past year, 95% rated the physical condition of the parks as either excellent or good.*
2. *The top ten improvements that respondents would most like to have made to parks are:*
  - Walking/Biking Trails
  - Drinking Fountains
  - Restrooms
  - Flower Beds
  - Picnic Tables/Benches
  - Amphitheater
  - Bike Racks
  - Parking
  - Park Lighting



- Playground Equipment
3. *Residents indicated a need for the following ten facilities/amenities: (Ranked in order by estimated number of households)*
    - Large Regional Park
    - Walking and Biking Trails
    - Outdoor Swimming Pools
    - Small Neighborhood Parks
    - Indoor Community Recreation Center
    - Indoor Swimming Pool at Community Center
    - Indoor Leisure Pool at Community Center
    - Outdoor Ice Rink
    - Nature Trails and Nature Center
    - Playground Equipment
    - Outdoor Tennis Courts
    - Indoor Basketball Courts at Community Center
  4. *Low satisfaction with the availability of the following facilities/amenities:*
    - Walking and Biking Trails
    - Nature Trails and Nature Center
    - Off-Leash Dog Parks
    - Outdoor Amphitheater/Theater
    - Small Neighborhood Parks
    - Outdoor Basketball Courts
    - Large Group Picnic Areas and Shelters
    - Playground Equipment
    - Outdoor Swimming Pools
    - Soccer Fields
  5. *Residents rated the following facilities as most important:*
    - Outdoor Swimming Pools
    - Indoor Community Recreation Center
    - Walking and Biking Trails
    - Small Neighborhood Parks
  6. *The City of Clayton is the organization used for outdoor and indoor recreation activities by the highest percentage of citizens.*
  7. *Residents rated a need for the following recreation programs as most important:*
    - Adult Fitness and Wellness Programs
    - Youth Sports Programs
    - Youth Summer Camp Programs
    - Youth Learn to Swim Programs
    - Special Events
  8. *Residents indicated a need for the following ten recreation programs: (Ranked in order by estimated number of households)*
    - Adult Fitness/Wellness Programs
    - Youth Sports Programs
    - Youth Summer Camp Programs
    - Youth Learn to Swim Programs
    - Special Events
    - Tennis Lessons and Leagues
    - Water Fitness Programs



**COMMUNITY INPUT.** Residents indicated a need for additional walking and biking facilities.

- Youth Fitness and Wellness Programs
  - Birthday Parties
  - Nature Programs
9. *Low satisfaction with the availability of the following programs:*
- Nature Programs
  - Adult Fitness and Wellness Programs
  - Youth Fitness and Wellness Programs
  - Youth Summer Camp Programs
  - Adult Sport Programs
  - Adult Art, Dance, Performing Arts
  - Youth Learn to Swim Programs
  - Youth Art, Dance, Performing Arts
  - Youth Sport Programs
  - Water Fitness Programs
10. *Amenities citizens would use if added to The Center of Clayton:*
- Youth Fitness Center
  - Sauna
  - Steam Room
  - Additional Adult Locker Rooms
11. *Activities citizens would like to participate in if available at the Hanley House:*
- Learn about the history of Clayton and its residents.
  - Attend a special event.
  - View exhibits from this period.
  - Go on a tour led by a volunteer guide.
  - Teach children about people who lived/worked there.
  - We're not interested in visiting the Hanley House.
  - Go on a tour with the use of an audio tape.
12. *Over half of the (survey respondents) citizens have used the outdoor skating rink at least once in the past two years.*
13. *Over 60% of the citizens (survey respondents) feel that the City of Clayton should continue operations of the outdoor ice skating rink at Shaw Park.*
14. *The following are the top ten reasons which prevent people from using parks, recreation facilities and programs offered by the City of Clayton:*
- Program times are not convenient.
  - Fees are too high.
  - Do not know what is being offered.
  - Program or facility not offered.
  - Use parks/facilities in other cities.
  - Poor promotion.
  - Lack of quality programs.
  - Availability of parking.
  - Classes are full.
  - I do not know locations of parks.
15. *Over 90 percent of the citizens (survey respondents) feel that parks, trails, open space and recreation services are either very important of somewhat important compared to other priorities for the City of Clayton.*



**COMMUNITY INPUT** The majority of the citizens surveyed for this plan feel that recreation services are important compared to other priorities for the City.

### Stakeholder Interviews

The Planning Team conducted approximately 15 stakeholder group interviews over the two day period of July 28 and 29, 2006. The interviews were arranged by the Parks and Recreation Director and conducted at The Center of Clayton. The following list contains the categories of groups, organizations, and individual types that were interviewed during this process:

- Ice Rink Users
- Clayton Shaw Park Swim Team
- Tennis Clubs
- Parks and Recreation Administrative Staff
- Parks Maintenance Staff
- City of Clayton Staff
- Clayton Chamber of Commerce
- Clayton Water Polo and Diving Clubs
- Teens
- Adult Sport Captains
- High School Coaches
- Youth Sport Captains
- Recreation Division Staff
- Corporate Users
- Cultural Festivals, Inc.
- Hanley House Council

Approximately 44 individuals representing these categories participated in the interviews. Each session lasted approximately 40 minutes. Every group interviewed was given a brief overview of the planning process, and how important the interviews are to that process. The participants were told that while notes were being recorded, no quotes or statements would be linked to an individual and that the comments would be recorded in general concepts not word for word record. All interviews were conducted “open door”.

The interviews were generally based on the following questions:

1. What existing features within the Clayton Park System are positive elements?
2. What existing features within the Clayton Park System are negative elements?
3. What are your top priorities for improving the Clayton Parks and Recreation System?
4. Identify the top three parks within the Clayton Park system that you use and what improvements would you like to see made to them?
5. What could be done to better meet your recreation needs?

The responses were recorded via hand written notes, then typed and edited. Edits were made for clarification and deleting material not relevant to the planning process. The responses were organized per the above stated questions; items not associated with a question were placed in the miscellaneous category.



**SHAW PARK** Taste of Clayton outdoor festival.



Each person interviewed was pleasant, engaging and grateful to be a part of the process. More importantly, the majority of participants expressed their hope for a positive outcome of the planning process.

The responses from the stakeholder interviews are included in Appendix E and are summarized below:

*What existing features within the Clayton Park System are positive elements?*

- Maintenance is good at both the indoor and outdoor facilities.
- Wide range of activities and programs.
- Special events.
- Shaw Park is great, still the same after all these years.
- The Center of Clayton.

*What existing features within the Clayton Park System are negative elements?*

- Parking and access is difficult at night. Often users have to walk through the park (Shaw) at night to get to (tennis) courts.
- Access points are a problem at all facilities.
- Joint use of facilities causes some conflicts.
- No place to park at Shaw Park.
- No dog park (in Clayton).
- No nice walking trail in Shaw Park.
- JazzFest damages fields during the summer, and fields never recover from fall season.
- Parks are over utilized, such as using sports fields for special events.

*What are your top priorities for improving the Clayton Parks and Recreation System?*

- Would like to see an appreciation for the diversity of interests people have, and an effort to work together and be supportive of each other.
- Control (Access) of The Center as a whole. People entering under false pretenses.
- Designated park for dogs.
- Improve circulation around Tennis Center, and improvements such as showers, and ability to control access onto courts.
- Improving field conditions should be a priority.
- More bike paths.
- More sidewalks in parks.



**SHAW PARK** Existing Corporate Tent

*Identify the top three parks within the Clayton Park system that you use and what improvements would you like to see made to them?*

- Shaw Park.
  1. Needs more parking.
  2. Corporate tent should be a permanent structure.
  3. Corporate tent should have its own comfort station.

- Top Events.
  1. Taste of Clayton
  2. Jazz Fest

*What could be done to better meet your recreation needs?*

- Improve accessibility for events.
- Add concessions at Tennis Building.
- Use mulch pile as a separate field.
- Make events in Shaw Park more visible from Brentwood Boulevard.
- Hanley House needs to become more of an asset which reaches out to the community.

*Miscellaneous*

- Biggest misuse of the parks are special events.
- No time after events for parks to recover.
- Not many complaints are voiced about the Park System.
- Want to make sure improvements to fields last longer.
- When planning improvements, don't do it "on the cheap", do it right the first time.
- An order of preference should be developed which prioritizes resident needs and revenue generation.
- Access problems for users on Hunter Avenue trying to walk to The Center.
- Hanley House needs to be more self sustaining and less reliant on the Parks and Recreation Department.



TASTE OF CLAYTON AT SHAW PARK

## RECREATIONAL PROGRAMMING AND ORGANIZATIONAL MANAGEMENT REVIEW

As part of the master planning process, a recreational programming and organizational management review was completed by PROS Consulting. This process involved analyzing the results from the community survey and undertaking an analysis of strengths, opportunities and weaknesses of the program services by meeting with staff and various City representatives, which then guided the action plan for future recreation programming and the organizational structure. The process to achieve this objective included:

- Identify and prioritize key issues that need to be addressed through an assessment of current findings and meetings with selected staff and other city representatives.
- Undertake an analysis of the community survey findings to look for needs, opportunities and trends that need to be addressed.

- Prepare a Recreation Program Planning document that includes the findings assessments and the action plan with recommendations for program offerings, organizational management and future recreation needs to achieve maximum success. This document is included as Appendix F of the Parks and Recreation Master Plan. The Opportunities section of this report is included in Section 3-Plan Analysis of this master plan. The Action Plan portion is included in Section 5-Implementation Strategies of this master plan.

**CONTRIBUTING REPORT INFORMATION**

Several contributing reports were used as background for developing this plan. Below is a synopsis of the germane topics presented by each contributing report.



**OAK KNOLL PARK** The Landscape Master Plan includes park signage standards which are being implemented throughout the Clayton park system.

**City of Clayton Landscape Master Plan**

The Landscape Master Plan addresses topical areas which relate directly to the Clayton Parks and Recreation Master Plan. It includes general recommendations for improvements to parks in the areas of signage and wayfinding. The plan also includes a “Walkability Assessment” of the City of Clayton focusing on a review of existing pedestrian connections, development of proposed pedestrian connections where existing connections are inadequate, and identification of opportunities for public gathering spaces within the community. The Landscape Master Plan also includes the following specific recommendations and improvements:

- A pedestrian entrance to Shaw Park off Brentwood Boulevard in the general area of Shaw Park pool including traffic calming “bump-outs”, sidewalk planters, and other streetscape improvements.
- Specific recommendations and guidelines for developing entrance features for all City parks throughout the community.
- Primary, secondary, and interior park signage standards including specific locations, a recommended consistent design style and vocabulary, and landscape treatment.
- A pilot project for the development of a walking trail loop within Shaw Park.

**Friends of Clayton Athletes Outdoor Fields Master Plan**

The Clayton Parks and Recreation Department and Clayton High School collectively own nine outdoor fields. Three fields are located off Gay Avenue and six fields are located within Shaw Park. A group of concerned citizens formed a committee called the Friends of Clayton. They selected an architectural firm to complete a master plan and budget for improvements to these fields. Field utilization in Clayton surpasses recommended guidelines, and the committee recognized that reducing school and community programs was not realistic. Therefore, the goal of the master plan was to develop a strategy for improving field conditions to withstand high demand without causing deterioration. Multiple alternative strategies were investigated by the plan. The plan

recommended that initial phases of improvements be limited to Main Gay Field and Shaw Park Field #7. The Gay Field Improvements provided for the installation of a synthetic turf performance field, new track surface, event lighting, expanded parking, improved road access and site lighting. Future improvements include new natural grass turf on the Upper Gay field. Phase II improvements for Shaw Field #7 include the installation of synthetic turf, vehicular barriers, lighting modifications, and portable seating.

**Missouri Statewide Comprehensive Outdoor Recreation Plan (SCORP):**

The 2002-2007 Missouri SCORP reviews and analyzes information relating to state and nationwide outdoor recreation trends, and projects recreation needs for the State of Missouri through the year 2007. It also identifies statewide priorities for the local outdoor recreation grant programs administered by the Department of Natural Resources (DNR). The priorities presented in the report are an integral part of DNR's local grant evaluation process, designed to make project selection equitable and responsive to statewide and local outdoor recreation needs. This document also contains standards used to determine land and facility demand.

**Centennial Greenway Analysis Summary, Conceptual Visioning Summary, and Final Greenway Plan:**

This series of documents represent the analysis, visioning and overall master planning for the Centennial Greenway. In addition to identifying the best possible corridors for the greenway, this plan establishes three implementation phases. It further divides the implementation into five year increments. Specifically Phase One establishes greenway segments linking Shaw Park to Greensfelder Park in University City following the Interstate 170/Metro corridor.

The route while complex, is organized into three sub-sections; the Urban east, from Forest Park in St. Louis City to I-170 at the western edge of University City and Clayton, the Central Corridor through Olivette and unincorporated St. Louis County to Lindbergh Boulevard, and West County from Lindbergh to Creve Coeur Park.

**DEFINITIONS AND TERMS**

In order to create a common understanding of what each proposed park type and facility/amenity will bring to Clayton, each type of park and recreation facility/amenity considered by this plan is described in Appendix A. These descriptions have been tailored to fit the needs of Clayton and represent the intended character that each facility will possess.





CLAYSHIRE PARK

**SUMMARY OF EXISTING PARK FACILITIES/AMENITIES**

**Clayshire Park**

Clayshire Park is located in the northwestern portion of the Clayshire neighborhood. As Clayton’s smallest park, it encompasses approximately .04 acres. A perfect place for a peaceful respite, this park includes mature trees, benches and a drinking fountain. No parking spaces exist as this park is accessed via foot from the surrounding neighborhood.

**Alamo Park**

Alamo Park is a .11 acre park located in the 6400 block of Alamo Avenue in the DeMun neighborhood in the eastern area of Clayton.

Tucked between two residential buildings, this small park contains a flagstone path surrounded by shade gardens. The sunny center area includes flowering shrubs and annual plantings which are changed seasonally. The park is used primarily by residents of the neighborhood. A set of steps leads to on-street parking which is available on Alamo Avenue. Accessible parking is available in the adjacent alley. The parking spaces are city spaces, but are signed “Residents Only”, which causes some confusion.



DEMUN PARK

**DeMun Park**

Located in the neighborhood commercial hub of the DeMun neighborhood, at the corner of DeMun and Southwood Avenues, DeMun Park is the neighborhood play space. This .6 acre park includes 2 playgrounds with swings, one for toddler age children and a second for older children. A low iron fence with a gate surrounds the park, keeping youngsters safe from traffic on DeMun Avenue. A winding walk around a raised central garden is often used by children learning to ride bicycles. Benches provide an area for parents to talk while keeping an eye on their children. Large trees keep the park in shade. Approximately 20 parking spaces are available on DeMun Avenue.

**Whitburn Park**

Whitburn Park is located in the Clayshire neighborhood at the southwestern edge of Clayton. The park is approximately .11 acres in size and is passive in nature with mature trees and landscaping. The park also includes a table for picnicking in the shade, as well as benches. Two parking spaces are located on Whitburn Drive adjacent to the park.

**Hanley Park**

The Martin Franklin Hanley House, built in 1855, is one of the St. Louis area's few farm houses dating back to the Civil War. The Hanley House is located south of Westmoreland Avenue and east of Hanley Road. On



April 23, 1968, the City of Clayton purchased the house, which is listed on the National Register of Historic Places. Restoration of the Hanley House, situated on a one-acre lot, is continuous. The site includes one picnic table and several trash receptacles to accommodate small gatherings. Parking is accommodated via neighborhood on-street spaces on Westmoreland Avenue. Pedestrian access to the house is provided by a path leading to the house.

### **Taylor Park**

Located in the Old Town Neighborhood, at the northern city limits of Clayton, Taylor Park, was the original site of the Taylor Grade School, until acquired by the city in 1974. The park totals approximately 1.0 acre. On the Central Avenue side, gardens with seasonal color welcome visitors to the park. A circular sidewalk flanked by benches leads to a charming Gazebo and a large playground for pre-school age children. A soldier's memorial surrounded by a garden is at the northwest corner of the walk. To the east there is a level, open area to play in, lovely shade gardens, and picnic tables under a canopy of large trees. Taylor Park is popular with residents and children of the surrounding area. Its close proximity to downtown also makes it a frequent meeting place for business people.



**TAYLOR PARK**

### **Wydown Park**

Wydown Park is located just east of Hanley Road on Wydown Boulevard, in the Wydown Business District. Completely renovated in 2002, this park offers visitors a diversity of experiences. The entry plaza to the park is flanked by seasonal gardens welcoming visitors to an open patio area with tables and chairs. A sidewalk winds through the level .55 acre parcel. The outside of the walk on the north and east is bordered by a stone walled garden containing flowering shrubs, blooming perennials, flowering trees and annual flowers that are changed seasonally. The open grassy area in the center serves as an informal “play” area. Vine-covered pergolas with wooden benches are located at the northwest and southeast corners of the walkway. Patrons from the nearby commercial area often enjoy the tranquil setting of the park. The park is served by parking scattered throughout the Wydown Business District.

### **Concordia Park**

Concordia Park is located in the DeMun Neighborhood on the grounds of Concordia Seminary. The City of Clayton has leased this passive 1.5-acre park from Concordia Seminary since 1972. The open space is low in the center and slopes up at each side. With gentle rolling topography, open grassy areas, and a canopy of mature trees, this park is a lovely place to enjoy nature while sitting at one of the benches or picnic tables provided for visitors. On-street parking spaces along DeMun Avenue serve this park.



**CONCORDIA PARK**

### **Oak Knoll Park**

Oak Knoll Park is located north of Clayton Road and west of Big Bend Boulevard. Vehicular access to the site is from Big Bend Boulevard. Oak



OAK KNOLL PARK

Knoll is the second largest park within the city limits of Clayton, comprising approximately 14.5 acres. It accommodates primarily passive activities such as picnicking, dog walking, and visiting the playground. The park environment comprises mostly canopy trees and lawn areas with gently rolling topography. A small pond with a central fountain is located in the southeast corner of the property. Oak Knoll Park includes two stone mansions, the first of which houses the Clayton Child Center. The second houses the St. Louis Artist Guild. Other structures include a maintenance building, and a comfort station. The park also includes two playgrounds, a formal garden, a walking trail, and parking for approximately 75 cars. The outstanding feature of this park is its natural beauty.

**Shaw Park**

Shaw Park is located along Brentwood Blvd., just north of Shaw Park Drive, near the heart of Clayton's Central Business District. Shaw Park is the city's oldest and largest park. Mayor Charles Shaw first established this park in 1935. With a canopy of majestic trees and open grass areas, as well as ornamental gardens, Shaw Park offers a respite from the bustle of the city. Shaw Park is also host to several special events throughout the year including, The Taste of Clayton, The St. Louis Jazz Festival, and in the summer, monthly Parties in the Park. A Bi-Centennial Garden is located off Brentwood Blvd. at Bonhomme.

Shaw Park is also home to the newly renovated outdoor Aquatic Center, which includes a 50-meter competition pool, a diving pool, and a splash



SHAW PARK

and play pool for young children. It also has one of the few remaining outdoor ice-skating rinks in the area. Other amenities include 10 tennis courts with a small tennis center building, 6 ball fields, 3 playgrounds, and 2 sand volleyball courts. Picnic facilities include "The Corporate Tent", a covered picnic site which can accommodate up to 180 guests, 2 picnic shelters (the North Shelter and the South Shelter) with rest room facilities, and 16 paved picnic areas with tables, including 5 large pads with barbeque grills that can be reserved. Service roads which function as walking paths wind through the park and numerous benches provide places to stop and savor nature.

**The Center of Clayton**

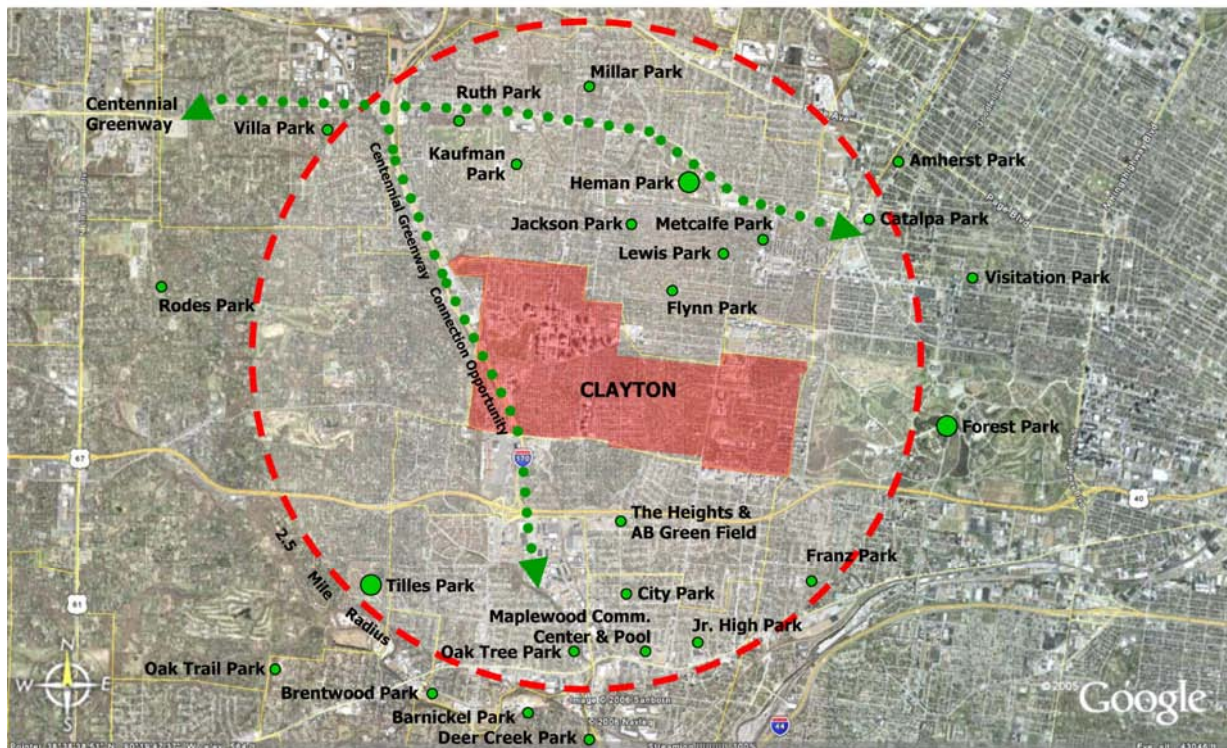
Located within Shaw Park, The Center of Clayton offers the ultimate experience in sports, fitness, swimming, recreational, educational and lifestyle enhancing programs. The Center's 149,000 square feet includes five gymnasiums, plus 20,663 square feet of aquatic areas, a suspended jogging track, weight lifting, aerobic/dance areas, a 30-foot climbing wall, classrooms, lounge, Northwest Coffee, a Subway restaurant and over 2,500 square feet of meeting rooms. The Center of Clayton is a facility jointly shared between the School District of Clayton and the City of Clayton.



**INFLUENCING FACTORS**

Figures 2-4 and 2-5 on the following pages contain data collected relative to factors that influence the location and distribution of proposed park land and park facilities/amenities. One map indicates regional influencing factors while a second map indicates local community influencing factors. Physical features such as highways, roads and light rail tracks divide the community, isolating some neighborhoods from direct recreation opportunities. Although a below grade pedestrian connection currently exists under Interstate 170, the interstate still acts as a barrier psychologically separating the Clayshire neighborhood from a significant portion of the City’s recreation assets. The Forest Park Parkway/Metro has a similar effect however it also serves as a buffer between the Clayton Central Business District and the adjacent residential area. Schools and existing parks indicate where recreation opportunities already exist within a neighborhood. Figures 2-4 and 2-5 are also included in Appendix C.

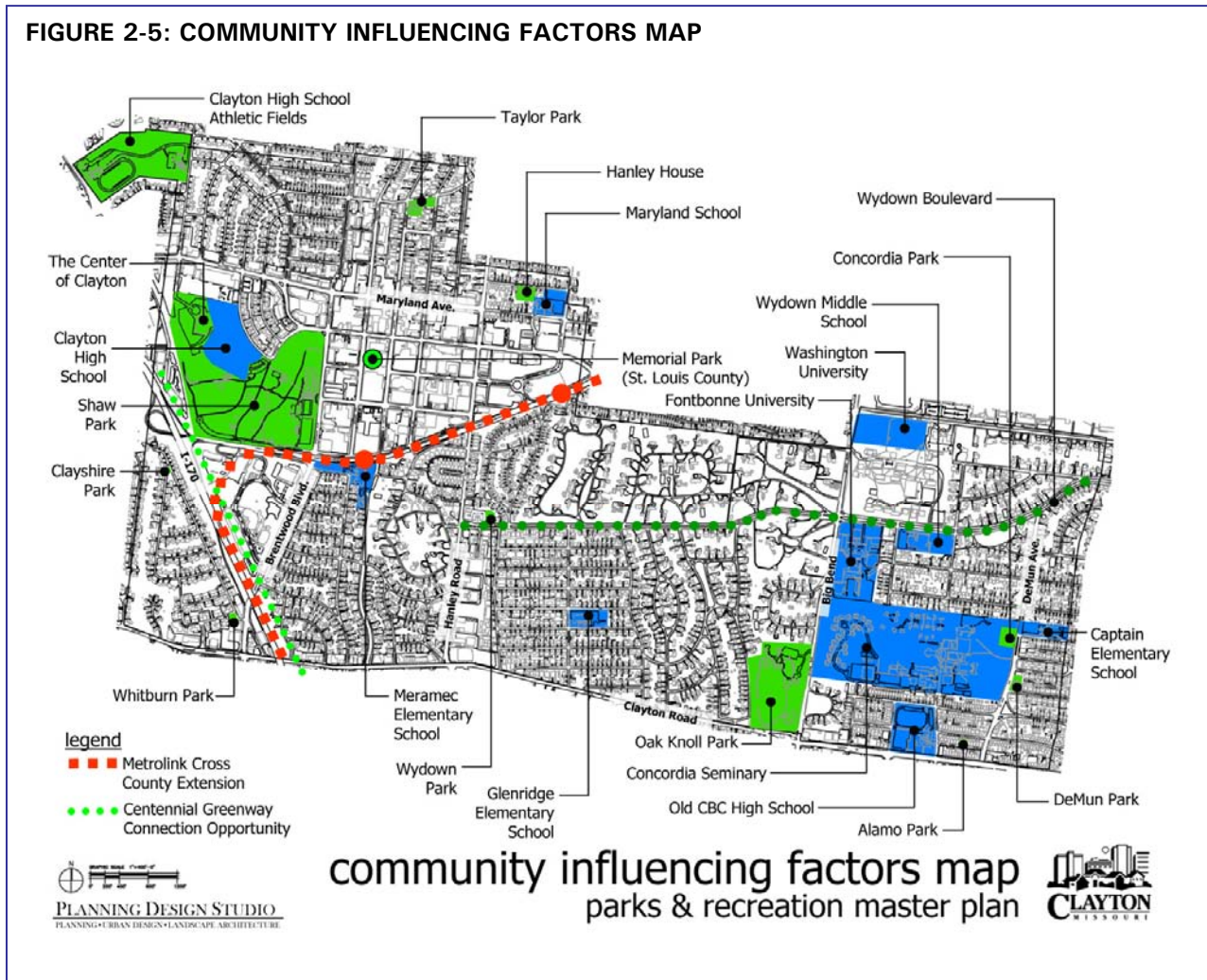
**FIGURE 2-4: REGIONAL INFLUENCING FACTORS MAP**



regional influencing factors map  
parks & recreation master plan



**FIGURE 2-5: COMMUNITY INFLUENCING FACTORS MAP**



**PUBLIC WORKSHOP #1**

A component of the planning process involved soliciting input through Public Workshops. As part of the data collection process, the first event took place on September 14, 2006 from 7:00 to 9:00 pm in The Center of Clayton. Approximately 35 people attended. The agenda included the following topics:

- *Welcome*
- *Purpose of Workshop*
- *Planning Process & Schedule of Events*
- *Clayton Park System Orientation*
- *Blue Sky Workshop*
- *Parks & Recreation Community Survey Review*
- *Meeting Adjournment*

After a brief overview of the Clayton Park System, a “Blue Sky” session was conducted which included grouping the audience into teams of 4-5 people. One person was elected leader/scribe, and the group was given a series of questions to answer. The questions covered the same topics as

the Stakeholder Interviews. After 40 minutes, each team leader presented the groups findings to the larger audience. The responses were very similar to the Stakeholder Interviews. The final activity included requesting each participant rank what they felt were the three most important ideas discussed during the workshop session. A summary of these responses is included below.

**PUBLIC WORKSHOP #1  
MOST IMPORTANT IDEA SUMMARY**

<u>Responses</u>	<u>Topic</u>
11	Hanley House
9	Connecting Path/Safe Passage to Parks
8	Improve Utilization of Hanley House/Ice Rink; Reduce Financial Drain
6	Preservation of Park/Green/Open Space
5	Establish Financial Endowment to Maintain Infrastructure
4	Improve Shaw Park Pool locker rooms
4	Running/Bike Paths
4	More Land/Space
3	Trail at Shaw Park
3	Lack of Restrooms
3	Lack of Parking
3	Cover for Rink