



---

## Sustainability Advisory Committee Virtual & In-Person Meeting minutes August 20<sup>th</sup>, 2024

---

### **ROLL CALL:**

Members Present: Deborah Grossman, Amy Jennings, Jeff Leonard, Laura Horwitz, Tina Murtha

Washington University Intern: Cate Young

Aldermanic Representative: Becky Patel

Aldermanic Representative: Susan Buse

### **ABSENT MEMBERS:**

Susannah Fuchs, Carol Klein,  
David Gipson, City Manager

### **CITY STAFF:**

Matt Malick, Director of Public Works

John Wulf, Asst. Director of Public Works

Daneen Schlereth, Recording Administrative Specialist II

---

Virtual/In Person meeting was called to order at 4:30pm

July meeting minutes were approved.

Deborah introduced guest speaker, Franklin Rosario, St. Louis Metro Manager – Ripple Glass Recycling. – PowerPoint presentation is attached at the end of the minutes.

- Deborah – made a motion for a Recommendation – for a Service Agreement with Ripple Glass - Amy seconded the motion. All in favor

### **Benchmarking/Building Performance Standards – Matt Malick**

- Matt & Cate worked on the draft ordinance sent to Planning & Building Officials for review. – hope to present BOA in September.

### **Purchasing Water Bottle Alternatives – David Gipson**

- Moved to September meeting.

### **Communications-Staff Update – Matt Malick**

- Gabby left the city; articles can still be sent in for the Clayton Connection & City Views.
- Musical Nights – volunteers needed for Aug 25<sup>th</sup>.

### **Idling Signage for Clayton Properties – Deborah for Susannah Fuchs**

- Susan has drafts of the graphics for the signs, waiting for the approval from the city to send off to printers.

### **Green Dining Alliance Proposal – Cate Young & Deb Grossman**

- Presenting at the BOA – September 10<sup>th</sup> meeting.
- Recommendation the city supports the Green Dining Alliance membership.

### **SAC Score Card - Jeff Leonard**

- Moved to September meeting.

### **Urban Dark Sky – C. Young**

- Cate shared her presentation to the committee that was presented to the Parks & Recreation Department.
- The Mission of the Urban Dark Sky is to restore the nighttime environment and protect communities & wildlife from light pollution.
- Shaw Park and Oak Knoll Parks are the best 2 candidates to be nominated, in the application process.
  - Benefits
  - Raise awareness
  - International recognition
  - Join 200+ Darksky Places
  - Darksky logo
  - Clayton - Darksky Partnership
- Presentation is attached at the end of the minutes.
- General discussion
- Motion made by Amy & Laura to take to the BOA – all in favor.

**Next meeting: September 24<sup>th</sup>, 2024**

Meeting adjourned at 5:35pm



# Ripple Glass Recycling & The City of Clayton

Franklin Rosario - STL Metro Program Manager

2024

# The Who's and What's of Ripple Glass!

## Who are we?

- Ripple Glass was founded in Kansas City in 2009 with the goal of diverting glass from landfills. Since then, our model has become the nation's gold standard in glass collection. We're now on a mission to expand our free collection programs across the U.S., where we can help!

## What we do!

- We place free public drop-off bins in locations that allow us to integrate into consumer habit loops and make glass recycling easy for users who are buying and consuming glass packaged products.
- When the bins are full, we transport them to our facility in downtown St. Louis where we process it into bottle cullet before sending it to Pevely, MO where it is remanufactured into new bottles.



[www.RippleGlass.com](http://www.RippleGlass.com)

# Frequently asked Questions

## Will there be broken glass around the bin?

- Hundreds of current partners can attest to the cleanliness of our locations.
  - We take pride in keeping the area around our bins clean and safe!

## Why is this different from Single Stream?

- Single stream recycling results in very contaminated low-value glass.
  - Per The Glass Packaging Institute: single stream recovery rate is **less than 40%**
  - Ripple Glass collection method results in a **98% recovery rate**
- MRFs are not the end of the line for recycled glass. After MRF processing, where much of the glass is diverted to trash, single stream glass must be sent to a glass specific processor (like us) if it hopes to find a second life, further eroding the usable amount.



[www.RippleGlass.com](http://www.RippleGlass.com)

JOIN THE PARTY. RECYCLE YOUR GLASS.

# What does it cost?

## **Nothing!** (except a parking spot)

- Ripple handles all costs associated with our program, the overhead cost of the bins, hauling, de-contamination, and processing.
- We are responsible for maintenance of the bin and immediate surrounding area.

## **Join a growing list of STL communities recycling their glass with Ripple!**

- **Webster Groves**
- **Maplewood**
- **Byrnes Mill**
- **Eureka**



[www.RippleGlass.com](http://www.RippleGlass.com)

# THANK YOU

Glass is one of the most sustainable – if not the most sustainable – packaging materials available. It is 100% recyclable, forever, and creates a true circular economy. Your glass bottle can go from the recycling bin and back on the store shelf in as little as 30 days!



Franklin Rosario - 314.374.2669 - [Franklin@RippleGlass.com](mailto:Franklin@RippleGlass.com)



[www.RippleGlass.com](http://www.RippleGlass.com)

JOIN THE PARTY. RECYCLE YOUR GLASS.

# Urban Night Sky Place Certification for Oak Knoll Park and Shaw Park

Sustainability Advisory  
Committee Meeting

08/20/2024, 4:30 PM





# DARKSKY INTERNATIONAL



Mission: "To restore the nighttime environment and protect communities and wildlife from light pollution" (DarkSky International)

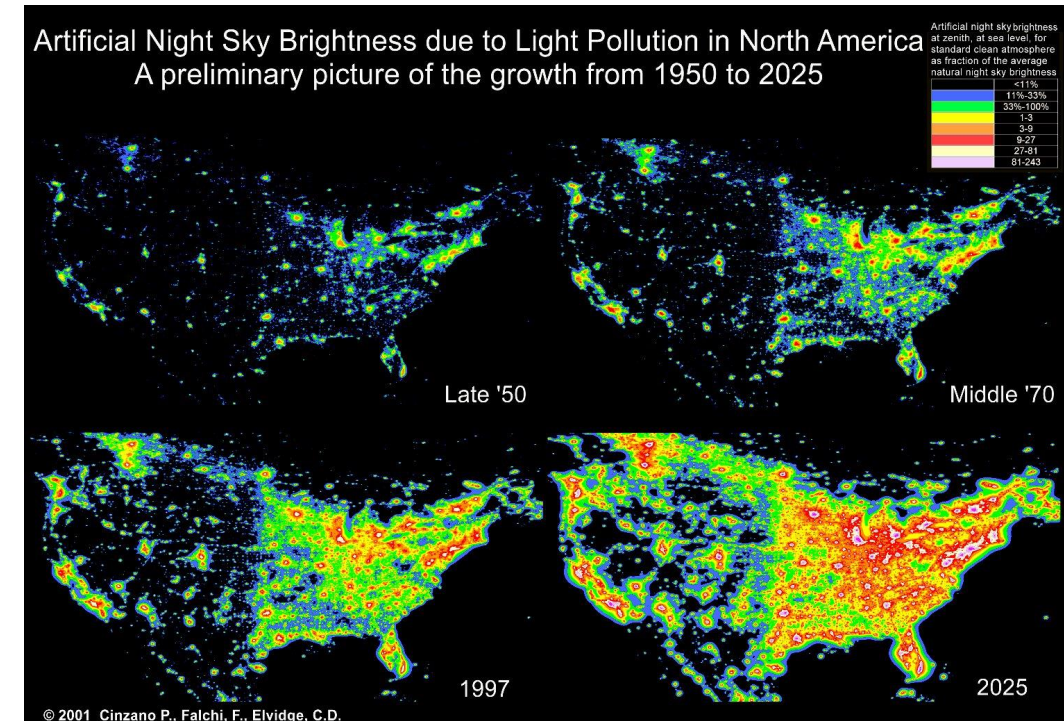


- International Dark Sky Places
- DarkSky Approved
- Responsible Outdoor Lighting
- Education and Outreach



Why Limit Light Pollution?

- Protect the planet, wildlife and human health
- Save money and energy



Stephanie Todd - The Effects of Light Pollution and What You Can Do

# URBAN NIGHT SKY PLACE (UNSP)



“Urban sites that promote an **authentic nighttime experience** despite being in the midst of **significant artificial light**”

Local Example: **Stacy Park** - Olivette, MO



*Stacey Park, DarkSky International*

# SAFETY FIRST



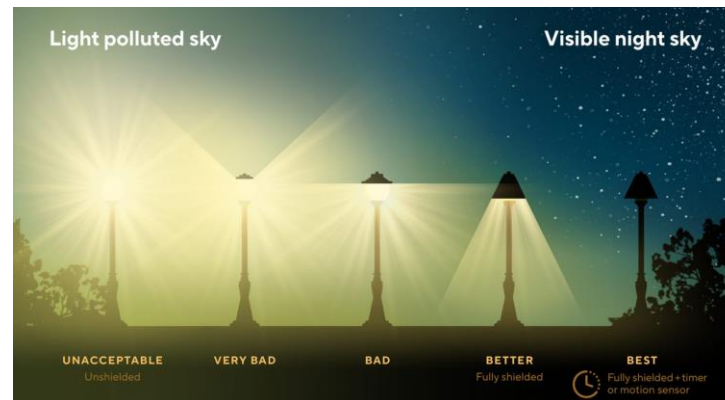
**NOTE:** UNSP designation does **not** mean park lights must be off at night!

Instead, lighting must follow 5 guidelines:

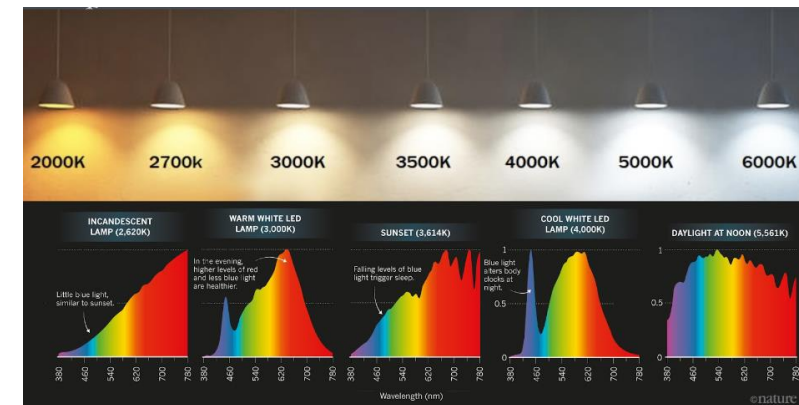
- Useful
- Targeted
- Low Level
- Controlled
- Warm-Colored



Stephanie Todd - The Effects of Light Pollution and What You Can Do



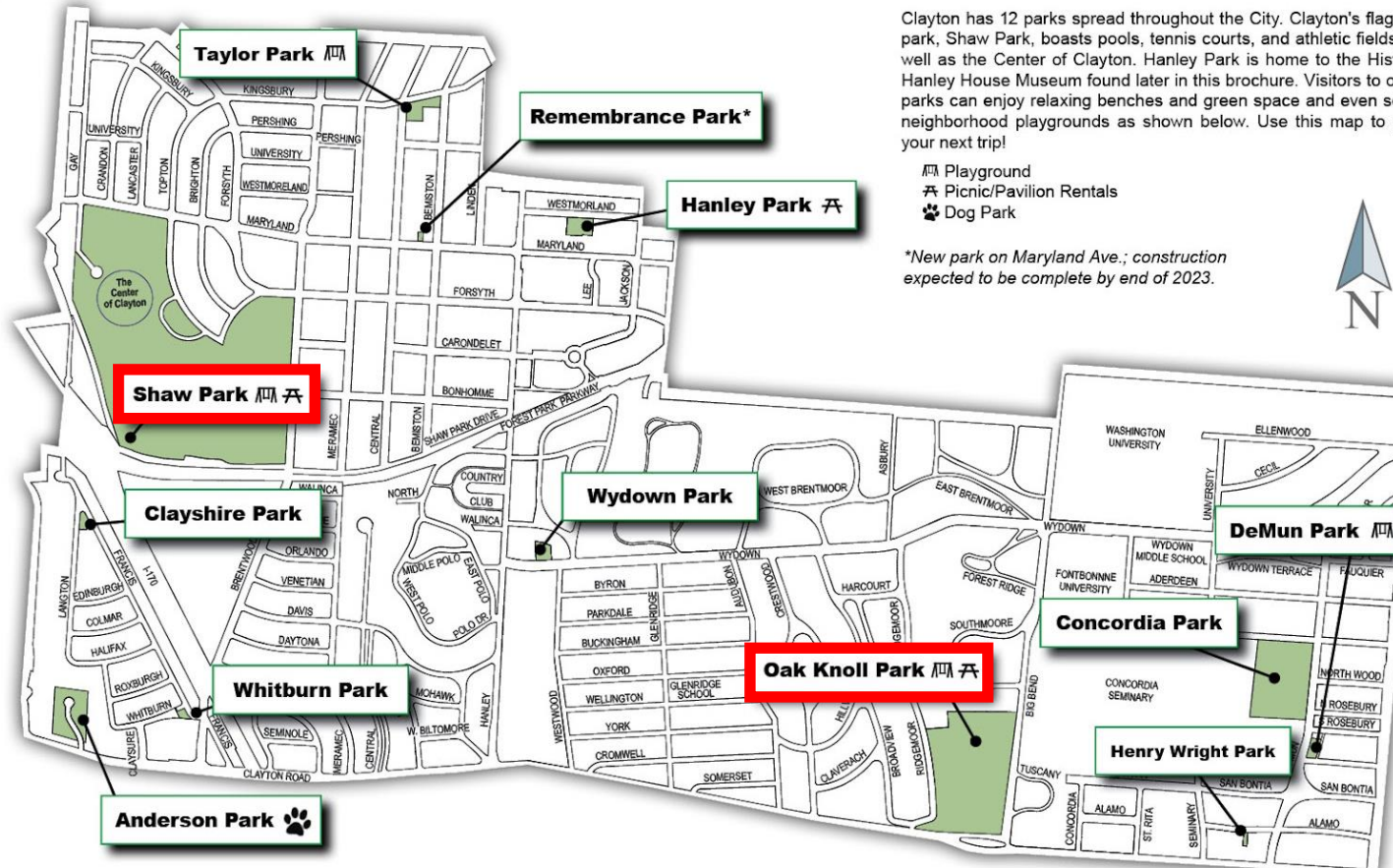
DarkSky International



Stephanie Todd - The Effects of Light Pollution and What You Can Do

# Parks Up for Certification

## Clayton Parks



Clayton has 12 parks spread throughout the City. Clayton's flagship park, Shaw Park, boasts pools, tennis courts, and athletic fields, as well as the Center of Clayton. Hanley Park is home to the Historic Hanley House Museum found later in this brochure. Visitors to other parks can enjoy relaxing benches and green space and even some neighborhood playgrounds as shown below. Use this map to plan your next trip!

- 🏞️ Playground
- 🍷 Picnic/Pavilion Rentals
- 🐾 Dog Park

\*New park on Maryland Ave.; construction expected to be complete by end of 2023.

# WHY THESE PARKS?



**OAK KNOLL PARK**



**SHAW PARK**

# ELIGIBILITY



Public/Private Owned



Within 50 km of an area with 10,000 or more people



An identified urban community impacting the park's sky quality



Ability to mitigate light pollution

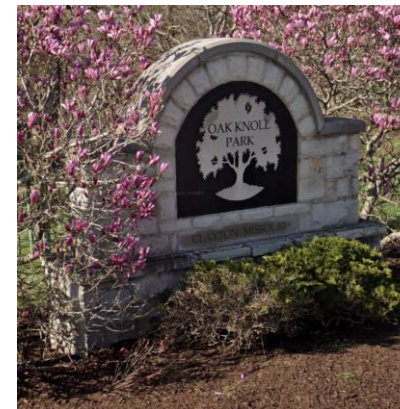
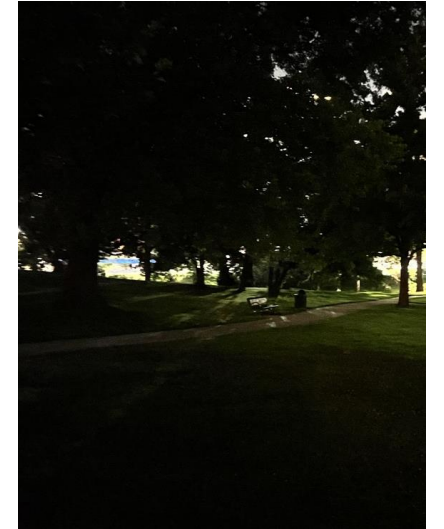


Entire area is included

Greater St. Louis Inc.



Shaw Park at Night



Google Maps

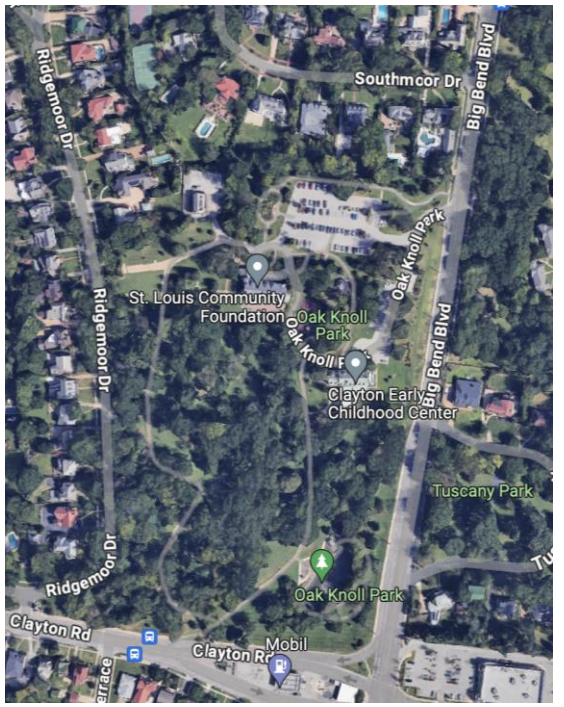
# APPLICATION PROCESS

1. Pre-Application Approval
2. Full Application Including:
  - Letters of Support
  - Maps of Area
  - Evidence of Eligibility
  - Public Access Policy
  - Lighting Inventory
  - Lighting Management Plan
  - Sky Quality Measurements
  - Public Outreach and Education
3. Annual Reports by Oct. 1

Oak Knoll Park at Dusk



Satellite Map of Oak Knoll Park



SQM Reading - 1	SQM Reading - 2	SQM Reading - 3	SQM Reading - 4	SQM Reading - 5	Location Average	Location Median	% Cloud Cover
16.62	16.62	16.5	16.49	16.56	16.56	16.56	30%
16.71	16.73	16.73	16.76	17.09	16.80	16.73	30%

Shaw Park SQM - Summer

# BENEFITS

- Raises awareness
- International recognition
- Join 200+ DarkSky Places
- DarkSky logo
- Clayton + DarkSky Partnership

*The Gellman Team*



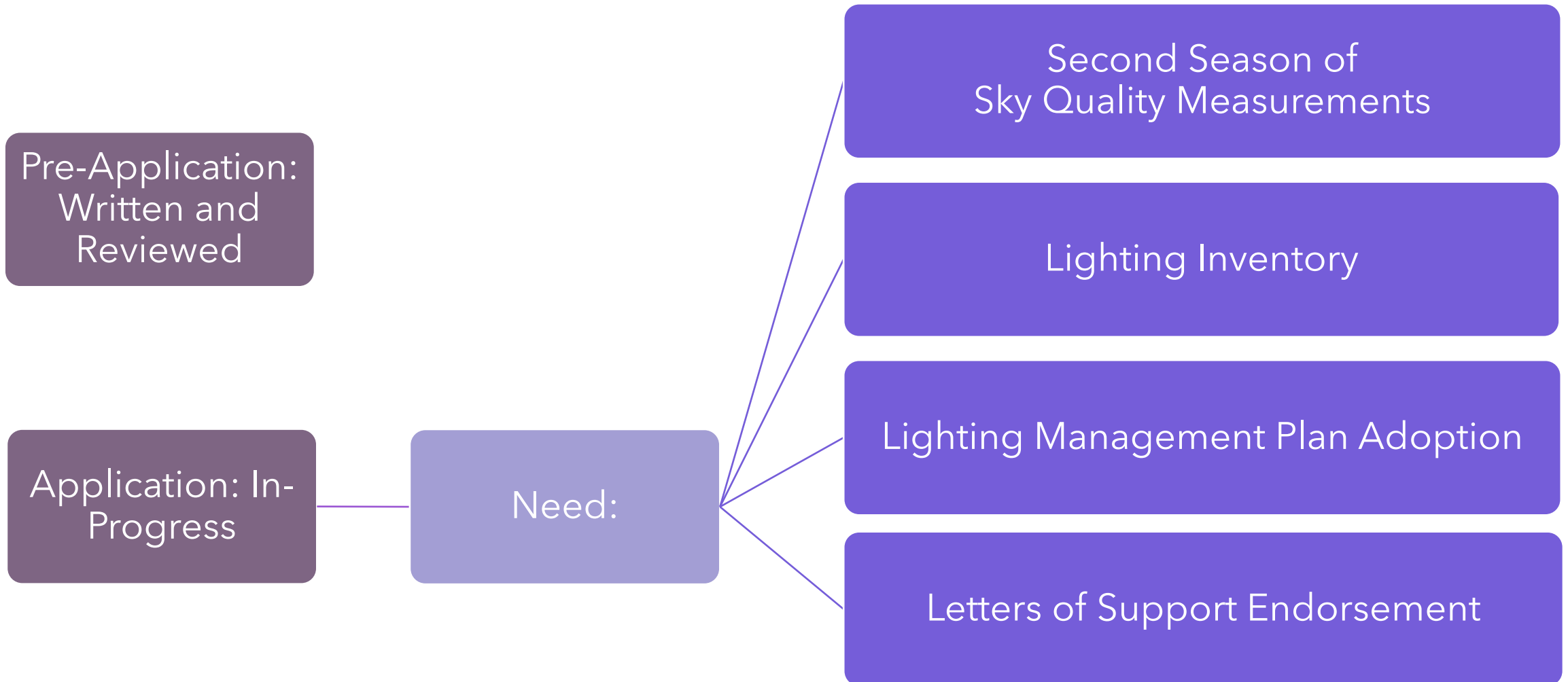
*KO Nature Photos*



*Enchanted Events*



# CURRENT STATUS



The background features a light purple gradient with several wavy, dashed purple lines. There are two white circles: one in the top-left corner and one in the bottom-right corner.

# Thank you!

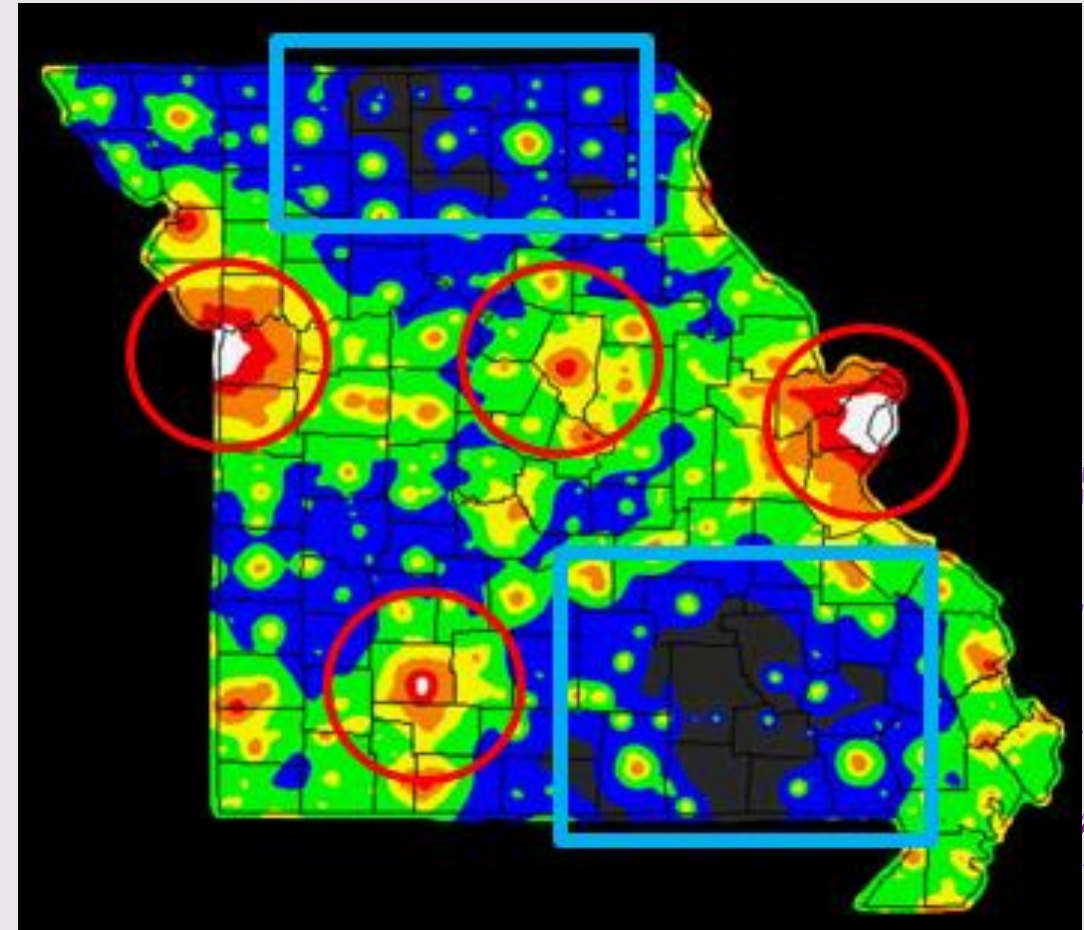
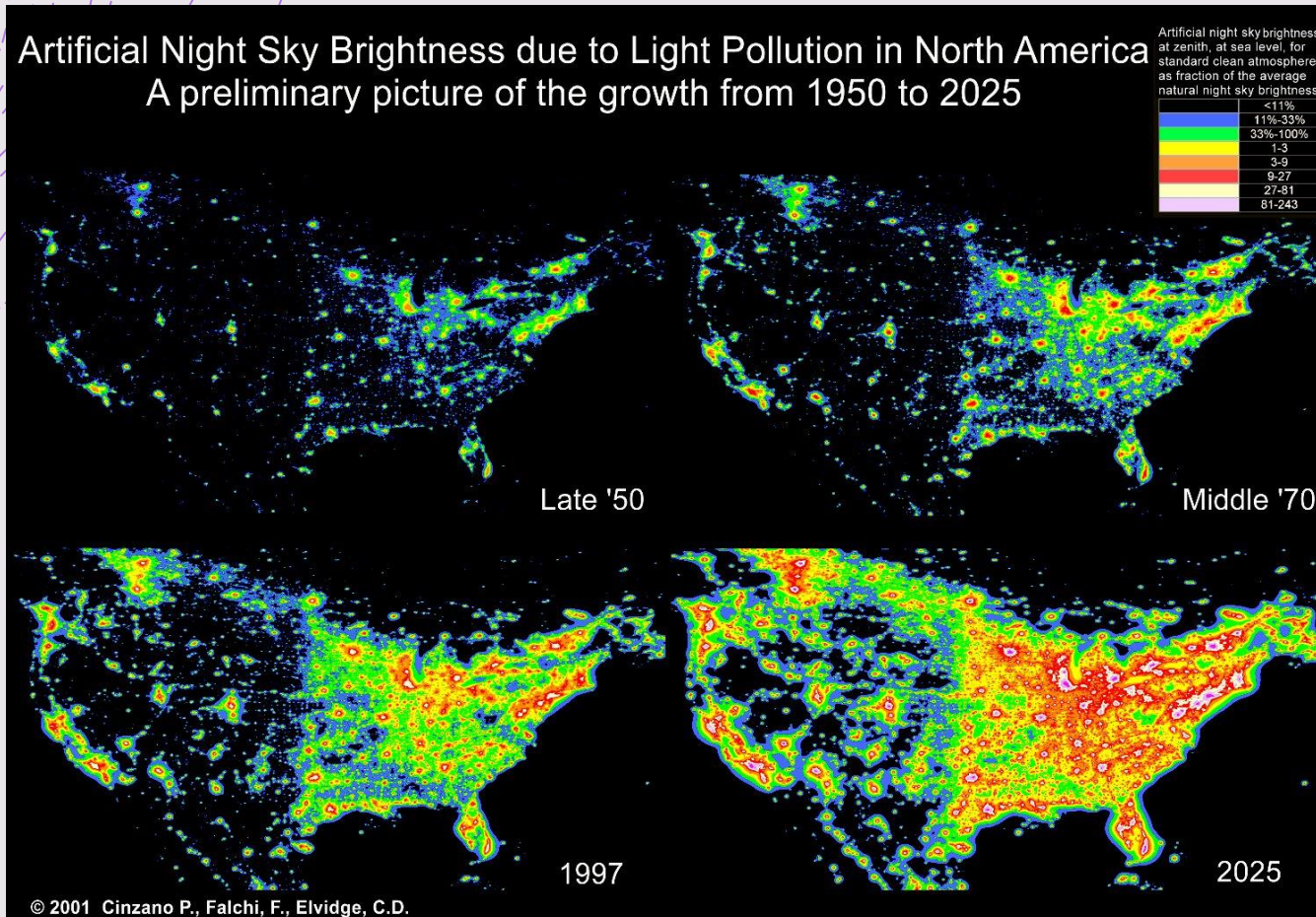
+

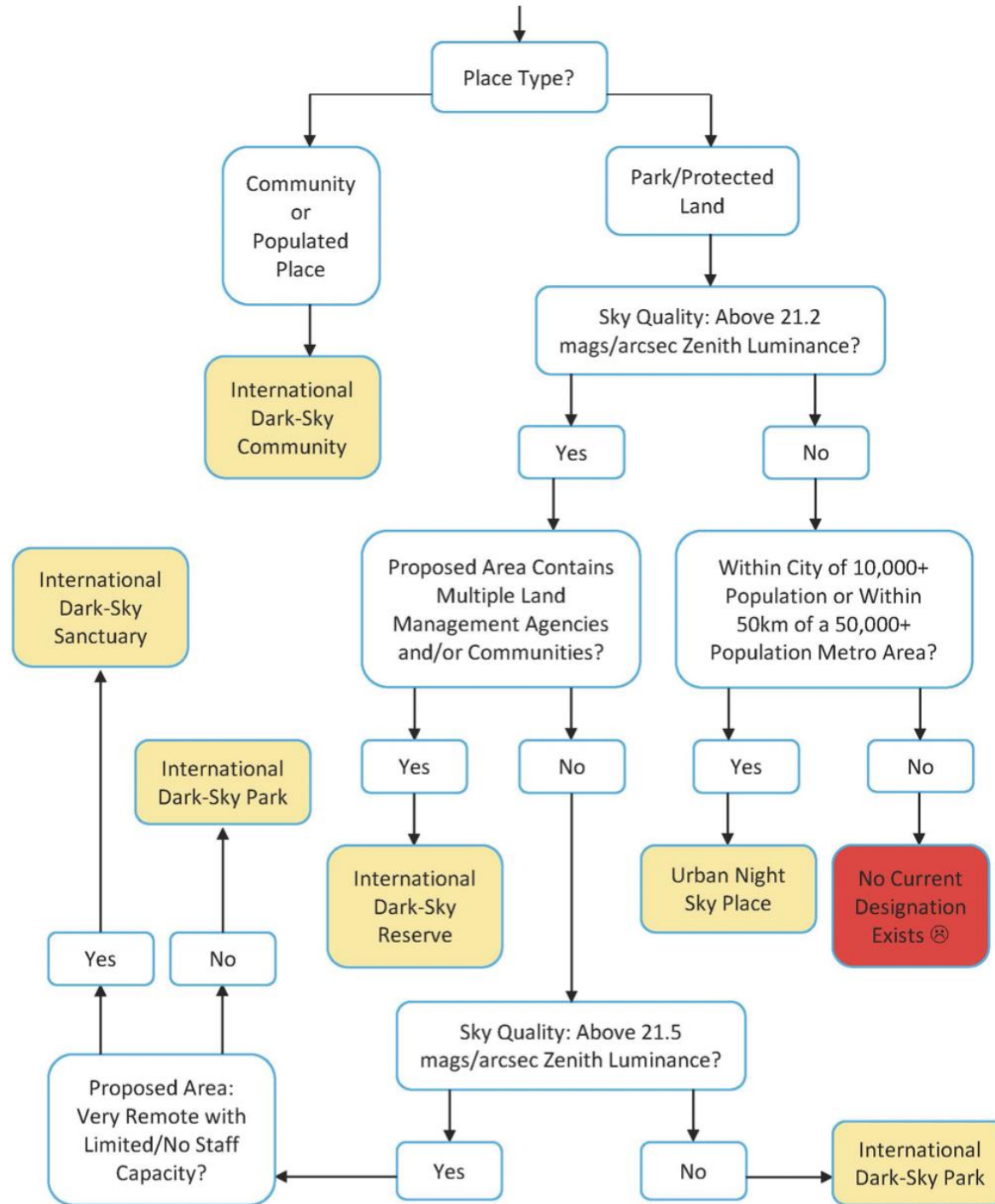
Any Questions?

# Resources

- + "DarkSky International restores the nighttime environment and protects communities from the harmful effects of light pollution through outreach, advocacy, and conservation." *DarkSky International*, n.d., <https://darksky.org>.
- + "Five Principles for Responsible Outdoor Lighting." *DarkSky International and Illuminated Engineering Society*, n.d., PDF Download.
- + Todd, Stephanie. "The Effects of Light Pollution and What You Can Do." n.d., Powerpoint Presentation.
- + "Clayton Parks Map." *City of Clayton*, n.d., <https://www.claytonmo.gov/government/parks-recreation/parks/clayton-parks-map>.
- + "Google Maps." *Google*, n.d., <https://www.google.com/maps>.
- + Gellman, Mark. "Shaw Park." *The Gellman Team*, 30 Sept. 2022, <https://www.thegellmanteam.com/blog/shaw-park/>.
- + "About Us." *Enchanted Events: Character Entertainment*, n.d., <https://enchantedeventsstl.com/f/top-venues-for-kids-birthdays-in-stl>.
- + Leonard, Pat. "Chicago Tops List of Most Dangerous Cities for Migrating Birds." *Cornell Chronicle*, 1 April 2019, <https://news.cornell.edu/stories/2019/04/chicago-tops-list-most-dangerous-cities-migrating-birds>.
- + "BirdSafeSTL." *St. Louis Audubon Society*, n.d., <https://stlouisaudubon.org/birdsafestl/#:~:text=the%20Mississippi%20Flyway-,St.,this%20highway%20in%20the%20sky>.

# Light Pollution Today





# LIGHT TO PROTECT THE NIGHT

## Five Principles for Responsible Outdoor Lighting



**Illuminating**  
ENGINEERING SOCIETY



DarkSky International

### USEFUL



#### ALL LIGHT SHOULD HAVE A CLEAR PURPOSE

Before installing or replacing a light, determine if light is needed. Consider how the use of light will impact the area, including wildlife and the environment. Consider using reflective paints or self-luminous markers for signs, curbs, and steps to reduce the need for permanently installed outdoor lighting.

### TARGETED



#### LIGHT SHOULD BE DIRECTED ONLY TO WHERE NEEDED

Use shielding and careful aiming to target the direction of the light beam so that it points downward and does not spill beyond where it is needed.

### LOW LIGHT LEVELS



#### LIGHT SHOULD BE NO BRIGHTER THAN NECESSARY

Use the lowest light level required. Be mindful of surface conditions as some surfaces may reflect more light into the night sky than intended.

### CONTROLLED



#### LIGHT SHOULD BE USED ONLY WHEN IT IS USEFUL

Use controls such as timers or motion detectors to ensure that light is available when it is needed, dimmed when possible, and turned off when not needed.

### COLOR



#### USE WARMER COLOR LIGHTS WHERE POSSIBLE

Limit the amount of shorter wavelength (blue-violet) light to the least amount needed.

# Insect Health

## Pollination



80% of Flowering  
Plants



75% of Crop  
Species

## Pest Control



Control Pests  
Without  
Chemicals

## Food

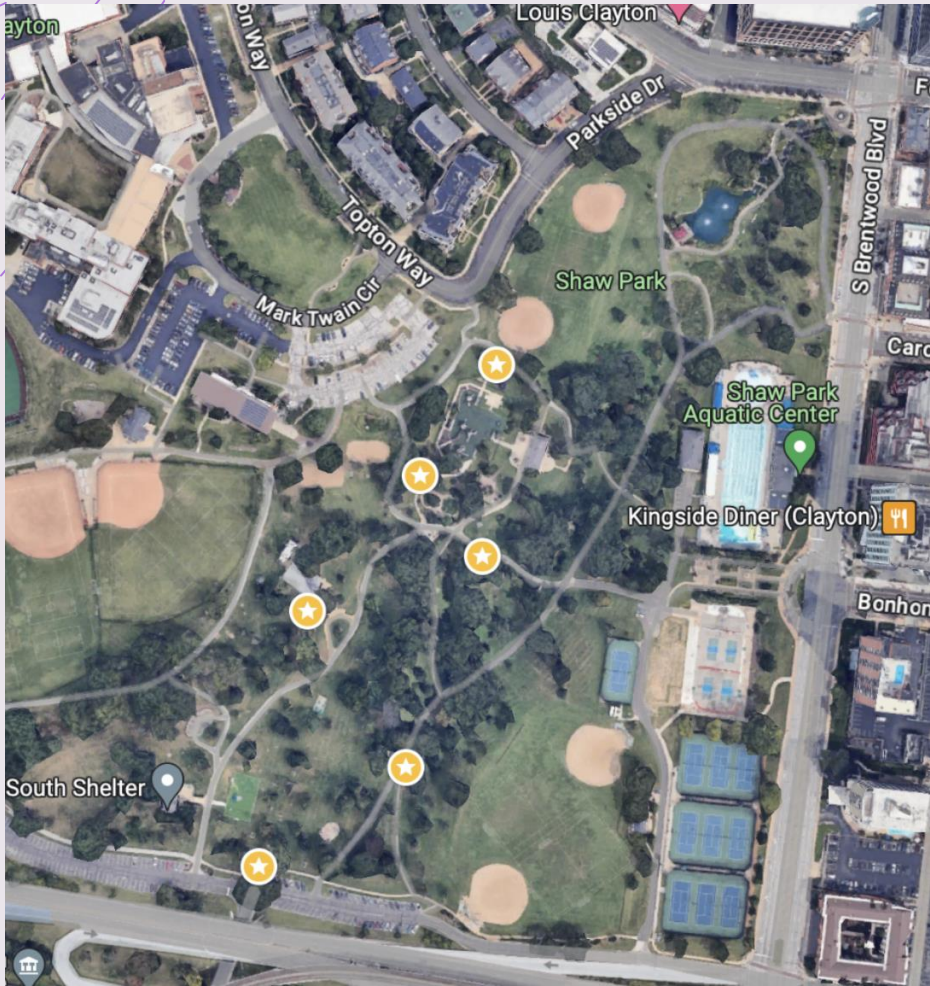


Many Vertebrates  
Eat Insects

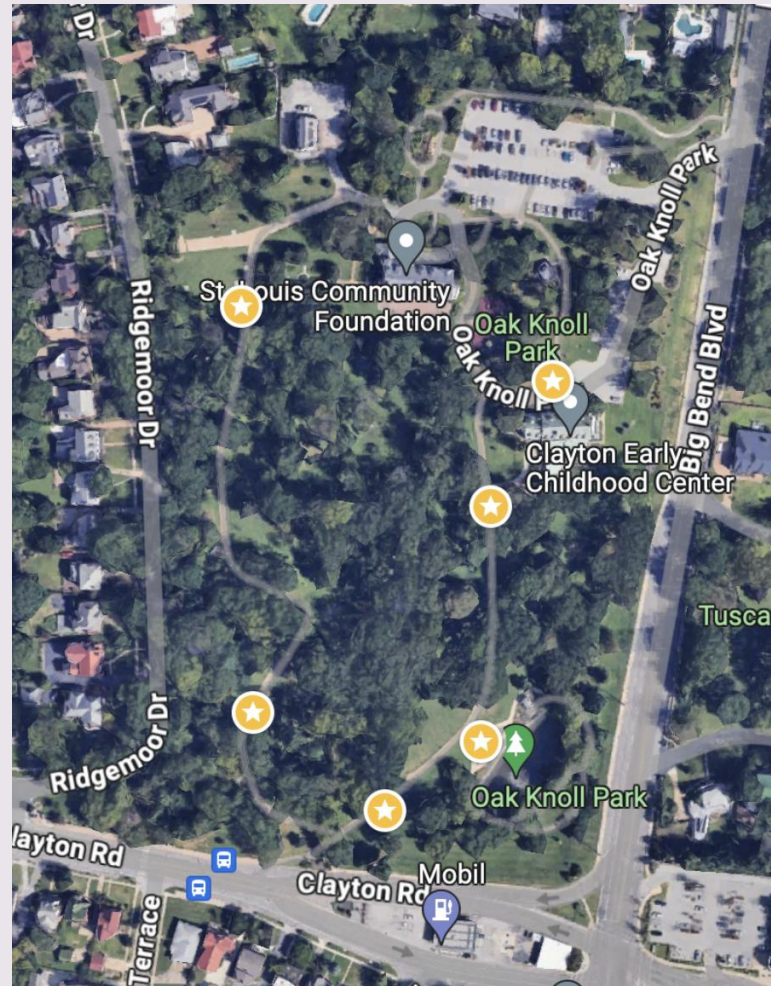
## Decomposition



They are our waste  
Management



**SHAW PARK**



**OAK KNOLL PARK**



# Sample Lighting Management Plan Purpose and Philosophy

## **1. Purpose and Philosophy**

This Lighting Management Plan (LMP) is intended to guide the selection, placement, installation and operation of all new and replacement/retrofitted light in the park. Its function is to regulate the use of artificial light at night (ALAN) in the park in a way that prioritizes the safety of visitors and staff while minimizing the impact of such light on protected outdoor spaces, viewsheds and wildlife. Therefore, all instances of the use of ALAN in the park will adhere to the principle that outdoor light should be deployed only: (1) when it is strictly needed; (2) where it is needed; (3) in the appropriate amount for a specific task; and (4) with the appropriate spectrum.