



Sustainability Advisory Committee Virtual & In-Person Meeting minutes July 16th, 2024

ROLL CALL:

Members Present: Deborah Grossman, Carol Klein, Susannah Fuch, Tina Murtha
Amy Jennings, Jeff Leonard
Washington University Intern: Cate Young
Aldermanic Representative: Becky Patel

ABSENT MEMBERS:

Laura Horwitz
Aldermanic Representative: Susan Buse

CITY STAFF:

David Gipson, City Manager
Matt Malick, Director of Public Works
John Wulf, Asst. Director of Public Works
Anna Krane, Director of Planning & Development
Daneen Schlereth, Recording Administrative Specialist II

Virtual/In Person meeting was called to order at 4:30pm

June meeting minutes were approved.

Debroah informed committee Cate will be staying on as an intern through next semester.

Benchmarking/Building Performance Standards – Matt Malick

- Cate is reviewing the model ordinance from the City of St. Louis.
- BOA approved the Resolution on June 25th.
- In process of drafting ordinance.

Fleet Electrification – Matt Malick

- Matt & John met with Ameren on July 8th, received report back from Ameren
- Working through details and hoping for an update at next meeting

Purchasing Policy Update – David Gipson

- Discussion at the BOA Friday session on July 19th.
- Working with staff – regarding what to do with events.

Communications

- Published articles in Clayton Connection & City Views.
- Musical Nights – volunteers for July 28 & Aug 25th.

Idling Signage for Clayton Properties – Susannah Fuchs

- Susan, Matt & Deb mapped out 47 locations for the “No Idle” signs.
- American Lung Associates to provide signs, City staff will install.
- Flyers will be available as well and information will be given to Gabby for publication.

Green Dining Alliance Proposal – Cate Young & Deb Grossman

- Deb provided a power point presentation-attached at the end of the minutes.
- Restaurant certification program – environmental impact
- Reduce food waste, CO3 footprint
- GDA district – must be 25% of independent restaurant.
- General discussion with committee.
- Deborah made a recommendation – the committee proposes to the Board of Alderman to offer 100% participation for all the restaurants, and Clayton’s maximum amount of \$11,000 annually to support and increasing composting and reduction of single use, plastics and waste.
- Susannah suggested to amend the recommendation with the 1st year being slightly higher. Committee were All in favor with the amendment.

Comprehensive Plan- Anna Krane

- Anna provided a Power Point presentation – attached at the end of the minutes.
- Anna discussed the plan through the eyes of sustainability.
- The document is to guide/inform physical social and economic development and growth.

Next meeting: August 20th, 2024

Meeting adjourned at 5:35pm



**CLAYTON
TOMORROW
2040**

Sustainability Advisory Committee *Comprehensive Plan Summary*

7/16/2024





**CLAYTON
TOMORROW
2040**

Comprehensive Planning

- Document to guide/inform physical, social, and economic development and growth
- Sets a long-term vision for future land use and built environment
- Establishes the future land use map, a foundation of zoning
- Per Missouri statutes, our “city plan for the physical development of the municipality” and “the plan shall be made with the general purpose of guiding and accomplishing a coordinated development of the municipality which will, in accordance with existing and future needs, best promote the general welfare, as well as efficiency and economy in the process of development”

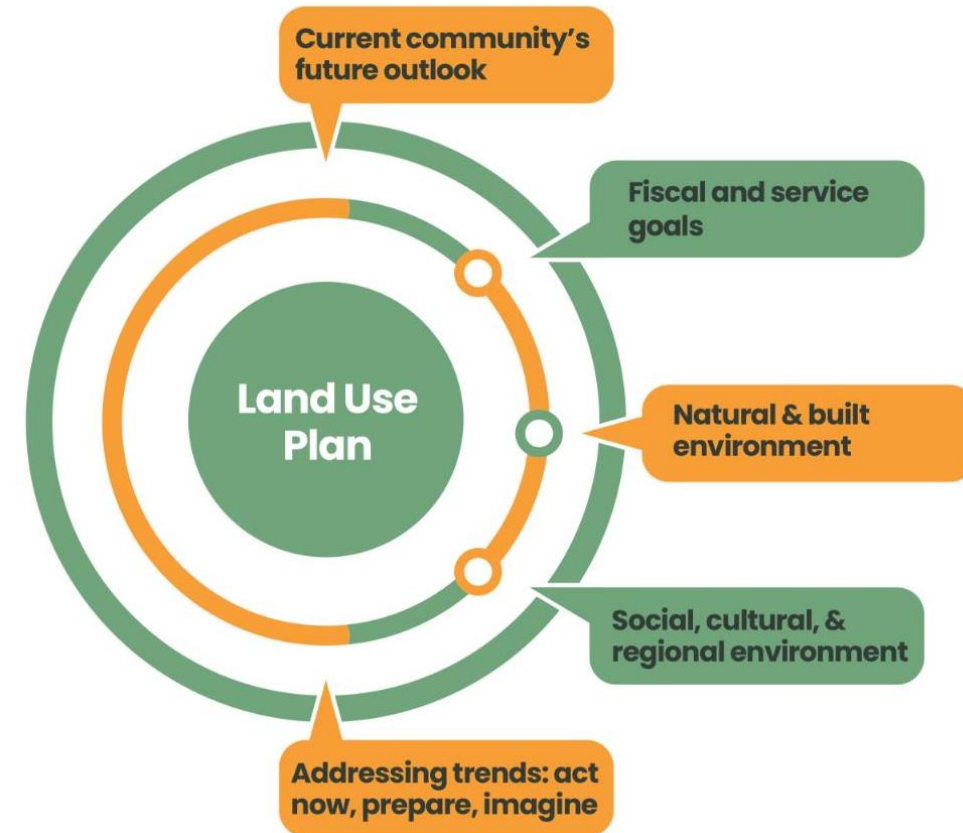




**CLAYTON
TOMORROW
2040**

Comprehensive Planning

- Directed actions and tasks
 - Mayor and BOA
 - Departments: City Manager, Planning & Development, Economic Development, Public Works
 - Commissions: PC-ARB
- Indirect actions or influence
 - Departments: Parks & Rec, Finance, Police, Fire
 - Commissions: PAAC, SAC, CEC, Parks & Rec, EDAC





2040 Vision

... Clayton is a vibrant, safe and welcoming community where everyone feels they belong.

... We prioritize pedestrian friendly infrastructure that connects neighborhoods, Downtown, schools, and parks.

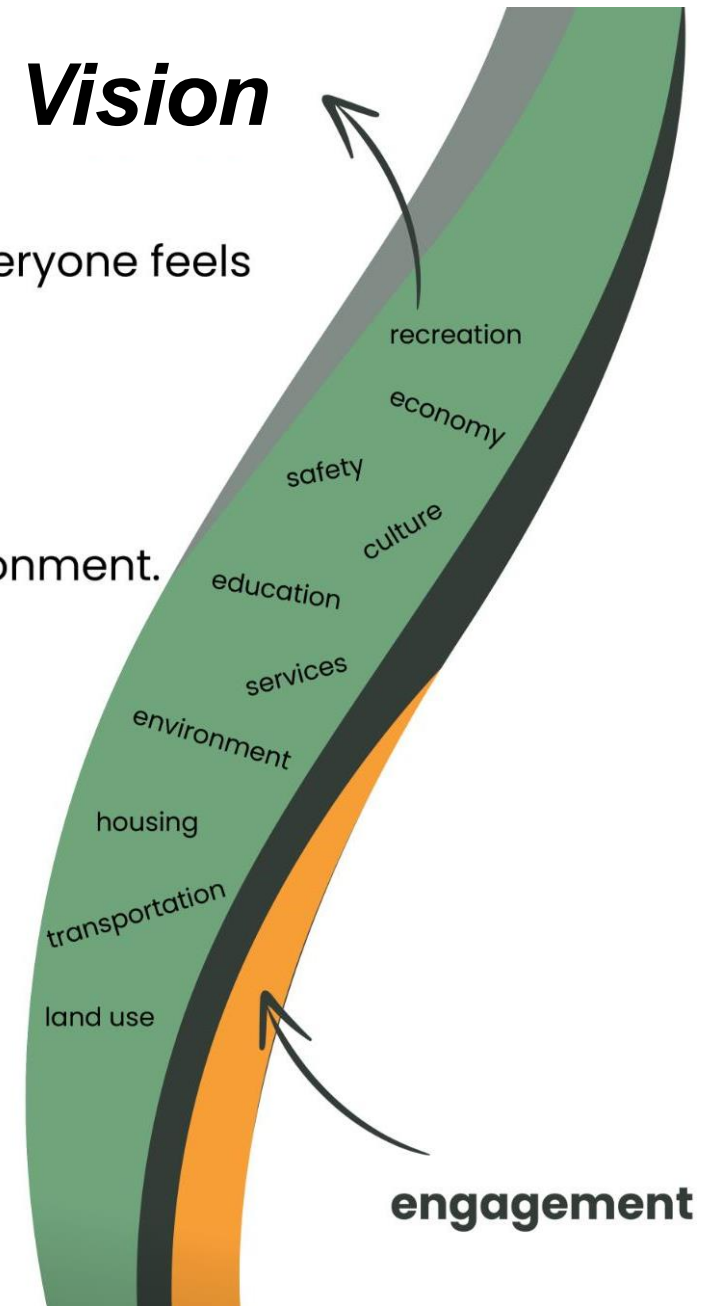
... Clayton is a steward of a sustainable future for a healthy environment.

... We champion an inclusive, resilient, and equitable economy.

... Our economic environment allows for the reliable provision of high-quality city services and benefits.

... Clayton takes pride in our neighborhoods, schools, businesses, and shared spaces.

... Our public events and community spaces reflect a rich diversity of culture and character.





**CLAYTON
TOMORROW
2040**

Board of Aldermen

- Annual
- Evaluate progress & priorities
- Update and adjust OKRs

Short-Term

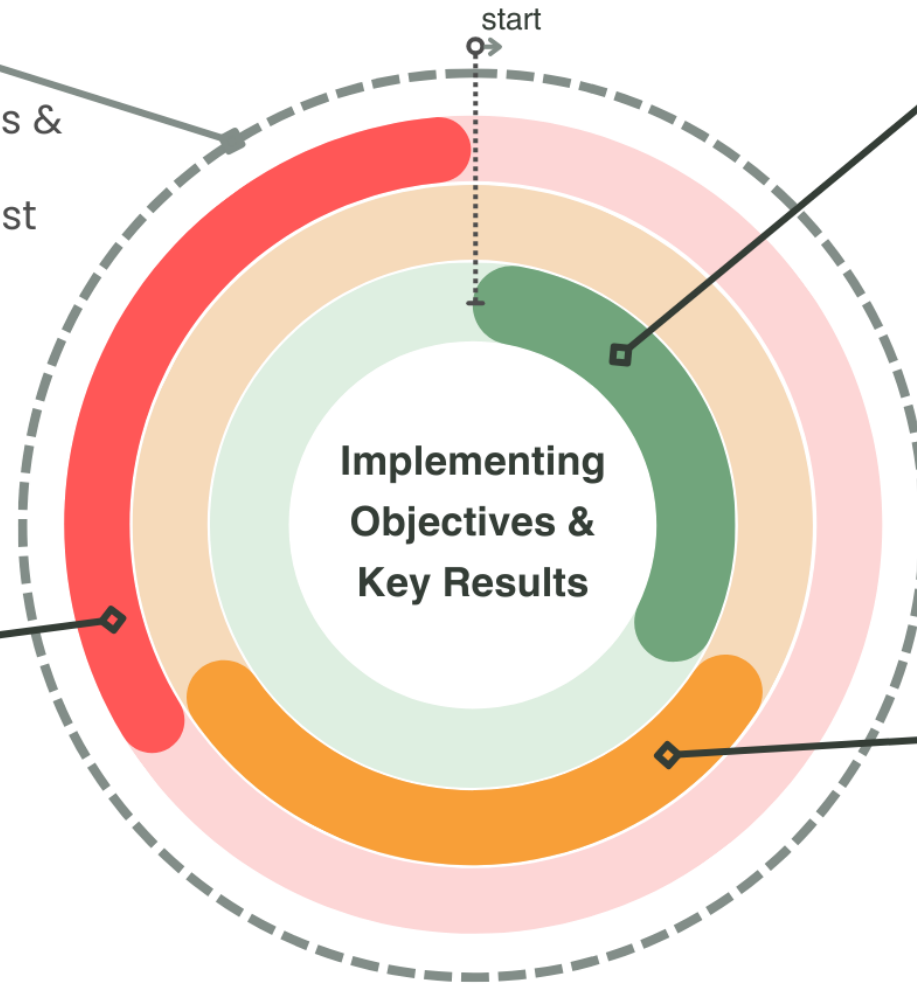
- 0-3 years
- High community priorities
- Quick implementation potential
- High impact to kick-start work

Long-Term

- 10+ years
- Continue building
- Additional studies & engagement

Mid-Term

- 4-10 years
- Build on short-term results
- Multi-departmental





CLAYTON
TOMORROW
2040

Implementation Matrix



Alignment with Vision

- Estimated impact on each of the 7 vision statements

Primary / max
Indirect



Impact/Focus

- BOA direction
- Area of impact
- Partner needs



Staff Time

- Staff time needed to complete each key result varies
- Some require coordination between multiple departments



Task Type

- Regulation, policy, guideline, or study
- Some could/should be addressed together to coordinate work or inform other result



Part of Code Re-Write

- Major element of the plan
- Many of the key results are direct steps of drafting the code and others will help inform new regulations



**CLAYTON
TOMORROW
2040**

Housing & Neighborhoods

4 Objectives and 18 Key Results

- Create infill development standards
- Address building preservation
- Prioritize greenspace and tree canopy
- Reduce lot coverage and stormwater runoff
- Include sustainable elements in public spaces



HOUSING & NEIGHBORHOODS Key Result	We are a vibrant, safe, and welcoming community where everyone feels they belong.	We prioritize a pedestrian-friendly infrastructure connecting neighborhoods, Downtown, schools, and parks.	We are stewards of a sustainable future for a healthy environment.	We champion an inclusive, resilient, and equitable economy.	Our economic environment allows for the reliable provisions of high-quality city services and benefits.	We take pride in our neighborhoods, schools, businesses, and shared spaces.	Our public events and community spaces reflect a rich diversity of culture and character.	T i m e l i n e	Leader	Partner
2.2 Establish appropriate infill development standards for building form and materials.									PDS	PC-ARB
2.3 Develop a preservation guide to support additional investment and protection of existing buildings that provide moderate rent options and consider ways to preserve existing affordable housing stock by incentivizing investment in historic buildings.									PDS, ED	PC-ARB, MO STATE, BOA
3.1 Prioritize greenspace, trees, and sustainability in residential neighborhoods to retain existing character.									PDS	SAC, PW
3.2 Develop a coverage reduction program that identifies innovative ways to reduce the amount of impervious coverage and promotes green infrastructure.									PDS	SAC, PC-ARB, BOA
3.3 Review the tree and landscape regulations to further protect and enhance the existing neighborhood tree canopy, especially during construction activities.									PDS	SAC, PW
3.4 Prioritize rain gardens, native plants, and other sustainable elements in our public spaces.									PDS, PW, PR	SAC, PRC, BOA



Commercial Development & the Economy

6 Objectives and 25 Key Results

- Promote active transportation
- Greenspace and plaza designs
- PUD points



<p style="text-align: center;">COMMERCIAL DEVELOPMENT & ECONOMY</p> <p style="text-align: center;">Key Result</p>	<p style="text-align: center;">We are a vibrant, safe, and welcoming community where everyone feels they belong.</p>	<p style="text-align: center;">We prioritize a pedestrian-friendly infrastructure connecting neighborhoods, Downtown, schools, and parks.</p>	<p style="text-align: center;">We are stewards of a sustainable future for a healthy environment.</p>	<p style="text-align: center;">We champion an inclusive, resilient, and equitable economy.</p>	<p style="text-align: center;">Our economic environment allows for the reliable provisions of high-quality city services and benefits.</p>	<p style="text-align: center;">We take pride in our neighborhoods, schools, businesses, and shared spaces.</p>	<p style="text-align: center;">Our public events and community spaces reflect a rich diversity of culture and character.</p>	<p style="text-align: center;">T i m e l i n e</p>	<p style="text-align: center;">Leader</p>	<p style="text-align: center;">Partner</p>
<p>5.1 Update the City's zoning code to reflect the unique identity of each commercial area of the community.</p>									PDS	ED, PC-ARB
<p>6.3 Participate in national PARKing Day or similar annual initiative to celebrate activation of public spaces with temporary activities.</p>									PDS, PW	ED
<p>8.1 Where possible, look to create pedestrian connections and cut through paths in neighborhoods to improve connectivity.</p>									PW, PDS	BOA
<p>9.1 Encourage publicly available open space as part of new commercial developments in Downtown, either through updating setback and building coverage requirements or allowing public use of private greenspace.</p>									PDS	ED, PC, BOA
<p>9.5 Prioritize roadways in Downtown for different modes of transportation.</p>									PW	STLCO, PDS
<p>10.5 Review PUD public benefits points system to identify opportunities for better alignment with City objectives.</p>									PDS	CM, PC, BOA



CLAYTON
TOMORROW
2040

Transportation & Connectivity

3 Objectives and 14 Key Results

- Coordinate with Livable Community Master Plan
- Prioritize wider sidewalks in key areas
- Revise bicycle parking regulations
- Prepare for new and emerging transportation technology



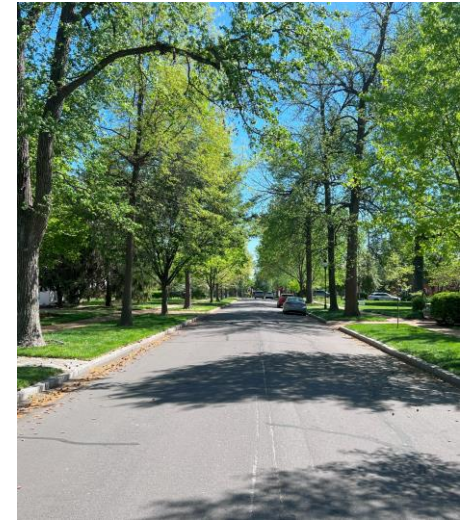
<p style="text-align: center;">TRANSPORTATION & CONNECTIVITY</p> <p style="text-align: center;">Key Result</p>	<p style="text-align: center;">We are a vibrant, safe, and welcoming community where everyone feels they belong.</p>	<p style="text-align: center;">We prioritize a pedestrian-friendly infrastructure connecting neighborhoods, Downtown, schools, and parks.</p>	<p style="text-align: center;">We are stewards of a sustainable future for a healthy environment.</p>	<p style="text-align: center;">We champion an inclusive, resilient, and equitable economy.</p>	<p style="text-align: center;">Our economic environment allows for the reliable provisions of high-quality city services and benefits.</p>	<p style="text-align: center;">We take pride in our neighborhoods, schools, businesses, and shared spaces.</p>	<p style="text-align: center;">Our public events and community spaces reflect a rich diversity of culture and character.</p>	<p style="text-align: center;">Timeline</p>	<p style="text-align: center;">Leader</p>	<p style="text-align: center;">Partner</p>
<p>11.1 Encourage redevelopment and reuse in the Forsyth Gateway area adjacent to the MetroLink Station.</p>									PDS, ED	BOA
<p>12.1 Coordinate with the Livable Community Master Plan to identify priority areas for widening sidewalks to allow for safe pedestrian access as well as outdoor dining and additional greenspace in place of on-street parking.</p>									PDS, PW	CM
<p>12.4 Prioritize wide sidewalks and open plazas in key areas through development requirements or as a public benefit item under a PUD.</p>									PDS	PW, PC, BOA
<p>13.1 Support implementation of the bike network and pedestrian improvements recommended by the Livable Community Plan through changes to land use and development patterns in Clayton.</p>									PW, PR	PDS, GRG, TRAILNET, CM
<p>13.2 Ensure Clayton is prepared for new and emerging transportation technologies.</p>									PW, PDS	BOA, ALL DEPTS
<p>13.3 Revise bicycle parking requirements for specific areas to coordinate private bicycle infrastructure investment with recommendations from the Livable Community Master Plan.</p>									PDS	PW
<p>13.4 Investigate opportunities to offer supportive infrastructure to encourage more sustainable forms of transportation.</p>									PW	PDS
<p>13.7 Reinforce active transportation goals of the Livable Community Plan with modifications to the City's Land Use Codes for layout, parking, and access regulations on private property.</p>									PDS	PW, ED



Community Character

4 Objectives and 14 Key Results

- Lead regional cooperation
- Encourage energy efficient technology
- Public guidelines and recommendations for green practices
- Develop climate resilience action plan
- Partner with MSD on stormwater management



<p style="text-align: center;">COMMUNITY CHARACTER</p> <p style="text-align: center;">Key Result</p>	<p style="text-align: center;">We are a vibrant, safe, and welcoming community where everyone feels they belong.</p>	<p style="text-align: center;">We prioritize a pedestrian-friendly infrastructure connecting neighborhoods, Downtown, schools, and parks.</p>	<p style="text-align: center;">We are stewards of a sustainable future for a healthy environment.</p>	<p style="text-align: center;">We champion an inclusive, resilient, and equitable economy.</p>	<p style="text-align: center;">Our economic environment allows for the reliable provisions of high-quality city services and benefits.</p>	<p style="text-align: center;">We take pride in our neighborhoods, schools, businesses, and shared spaces.</p>	<p style="text-align: center;">Our public events and community spaces reflect a rich diversity of culture and character.</p>	<p style="text-align: center;">T i m e l i n e</p>	<p style="text-align: center;">Leader</p>	<p style="text-align: center;">Partner</p>
<p>14.3 Lead the way on regional cooperation by ensuring commission, Board of Aldermen, and others are in regular communication with adjacent municipalities.</p>									CM, BOA, M	Commissions & Depts
<p>15.2 Ensure Clayton has a strong identity that is reflected in the built environment.</p>									PDS	CCF
<p>16.1 Participate in research and economic development opportunities with local colleges and universities.</p>									CM	All Depts, WashU, Concordia
<p>17.1 Remove barriers to rehabilitation and modification of existing structures with energy efficient technology.</p>									PDS	SAC
<p>17.2 Publish guidelines and regularly share resources/data related to sustainability and green infrastructure.</p>									Communications	SAC, PDS, PW
<p>17.3 Develop a climate resilience action plan for Clayton based on the regional sustainability plans completed to date.</p>									PDS, PW	SAC, BOA, CM
<p>17.4 Develop a partnership with the Metropolitan Sewer District to coordinate updates to stormwater management regulations and proactive approaches to regional watershed management.</p>									PW	SAC, MSD



**CLAYTON
TOMORROW
2040**

Sustainability Implementation Summary

SAC

- Review and advise on code changes
- Guide and contribute to research and ideas
- Strategic planning initiatives

Short-Term

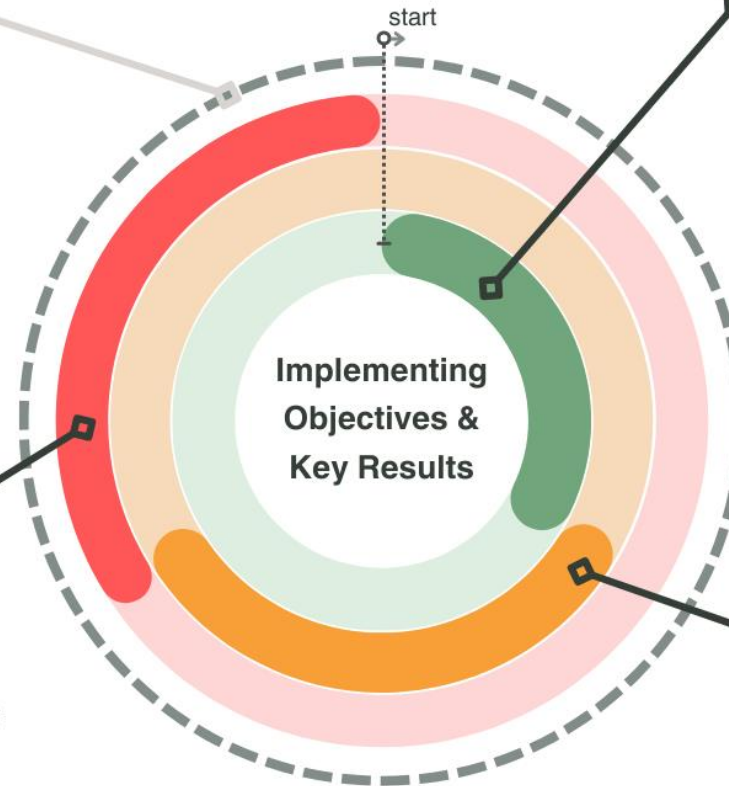
- Initial code revisions and policy updates
- Activity and event support

Long-Term

- Zoning and building codes
- Climate Action Plan
- Preparedness planning

Mid-Term

- New regulations
- Data and progress tracking
- Partnerships





**CLAYTON
TOMORROW
2040**



CLAYTON GREEN
DINING: A Waste Reduction
Opportunity

SAC Meeting
July 16, 2024



Emissions and Food Waste

Approximately 30% of U.S. food is wasted and is the most abundant material sent to landfills and incinerators.

Restaurants are major producers of food waste.

Methane is produced when food breaks down in landfills

- EPA estimates landfills are the 3d largest source of human-caused methane emissions (~23M gasoline cars driven for a year).
- Landfills produce almost **three times** more methane than reported – equal to dozens of coal-burning power plants

In 2015, U.S. set a goal to cut food waste **in half by 2030** but food waste has only **increased**.

What is the Green Dining Alliance (GDA)?

GDA: [earthday365](#) restaurant certification program to reduce restaurants' environmental impact.

- Sponsored by St. Louis-Jefferson Solid Waste Management District, MO Dept. of Natural Resources, Sauce Magazine, Garrett Paper & St. Louis County Dept. of Public Health.
- Since 2012, certified over 100 restaurants, breweries, coffeeshops, bakeries, food trucks and caterers including: MOBOT; Missouri History Museum; St. Louis Art Museum; Ibbey's and Whittemore House at WU; Danforth Plant Science Center; SLU; and Principia College.

GDA Mission Overview

- Reduce CO2 footprint through energy efficiency
- Reduce food waste to decrease costs and GHG emissions
- Reduce single-use plastic waste and bans styrofoam – a toxic, non recyclable product
- Improve recycling and composting, reduce cross contamination, and grow education and awareness of staff, area businesses, and residents
- Encourages purchases from local sustainable vendors

GDA Districts

GDA District: 25% of independent restaurants in commercial districts are GDA certified

GDA District Mission

- Measure total waste footprint and encourage other sustainability initiatives.
- Receive recognition and customer loyalty.
- Establish a sense of place through sustainability

Restaurant Benefits

Grants to support sustainable initiatives:

- Reimburse composting costs up to **\$240/year**
- Plastic Waste Reduction Grant of up to **\$500** to supplement reusable product replacement of plastic disposables
- Potential access to **subsidized compostable products** through [earthday365](#)

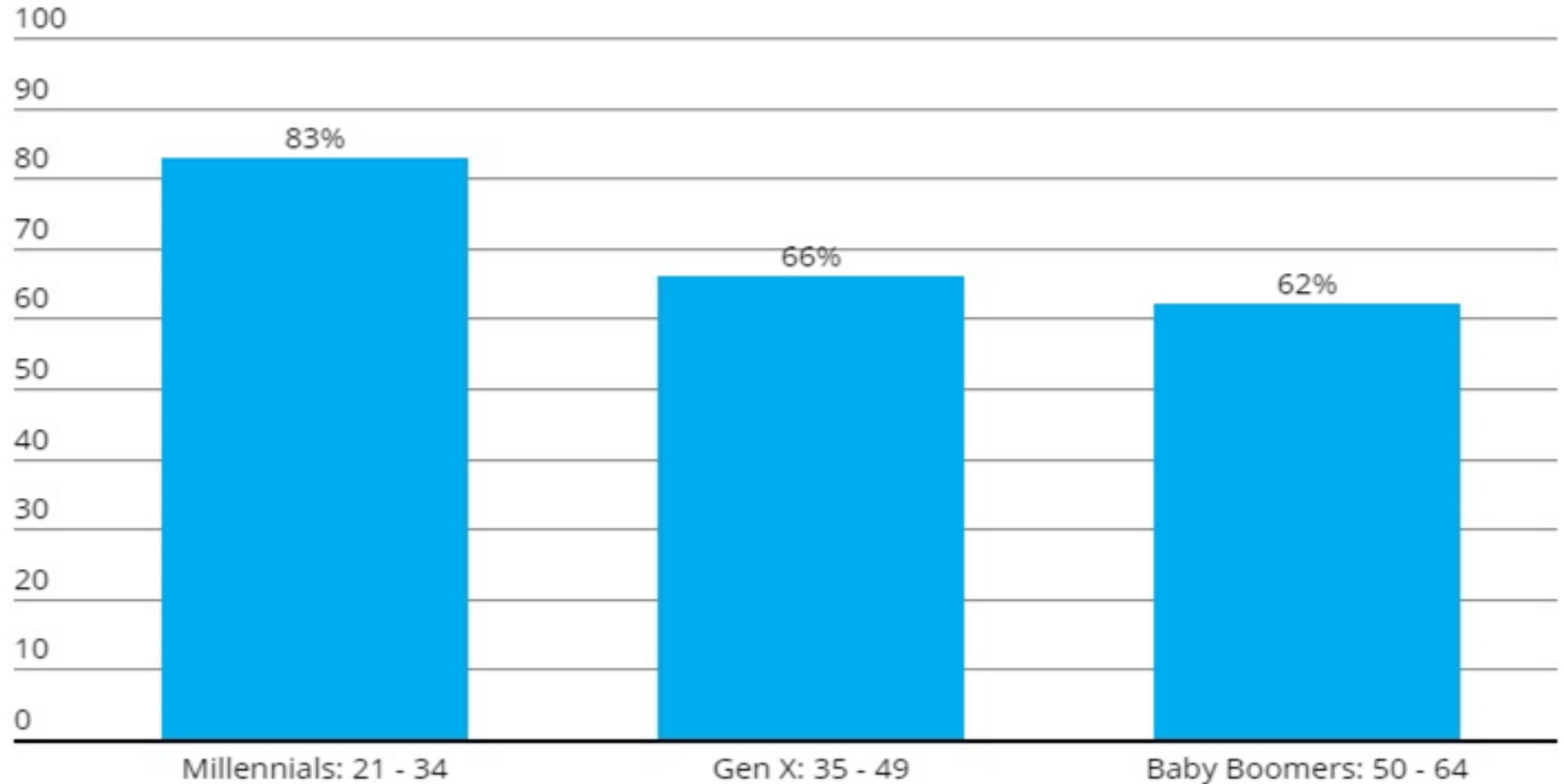
Marketing:

- Listing in Sauce Magazine and Healthy Planet (Feast Magazine in 2023)
- Social media and newsletters spotlight GDA and sustainable achievement by each participant

Clayton Benefits

- Promote higher recycling and composting participation with lower contamination rates
- Create awareness/education around waste diversion.
- Third party certification prevents greenwashing
- Attract patrons who value sustainability and will support Clayton businesses

Customers, especially millennials, prefer to support companies with environmental policies



GDA Program Costs

GDA Costs:

- Initial Certification - **\$250**
- Subsequent Recertification - **\$200** (annually)

Cities offering subsidies:

- Maplewood: \$100 for certification/recertification
- Cortex: \$250 for certification (working on annual)
- Brentwood: \$100 for certification/recertification
- Webster Groves: Microgrants up to \$1,000 and \$3,000 includes certification fees (Up to \$50K)

Potential Costs City Wide

Costs for GDA subsidy to all Clayton restaurants (assuming 55 restaurants, including current members):

50% GDA Fees:

25% Participation: \$1,750 in Year 1; \$1,400 annually

50% Participation: \$3,500 in Year 1; \$2,800 annually

100% Participation: \$6,875 in Year 1; \$5,500 annually

100% of GDA Fees:

25% Participation: \$3,500 in Year 1; \$2800 annually

50% Participation: \$7,000 in Year 1; \$5,600 annually

100% Participation: \$13,750 in Year 1; \$11,000 annually

Questions?

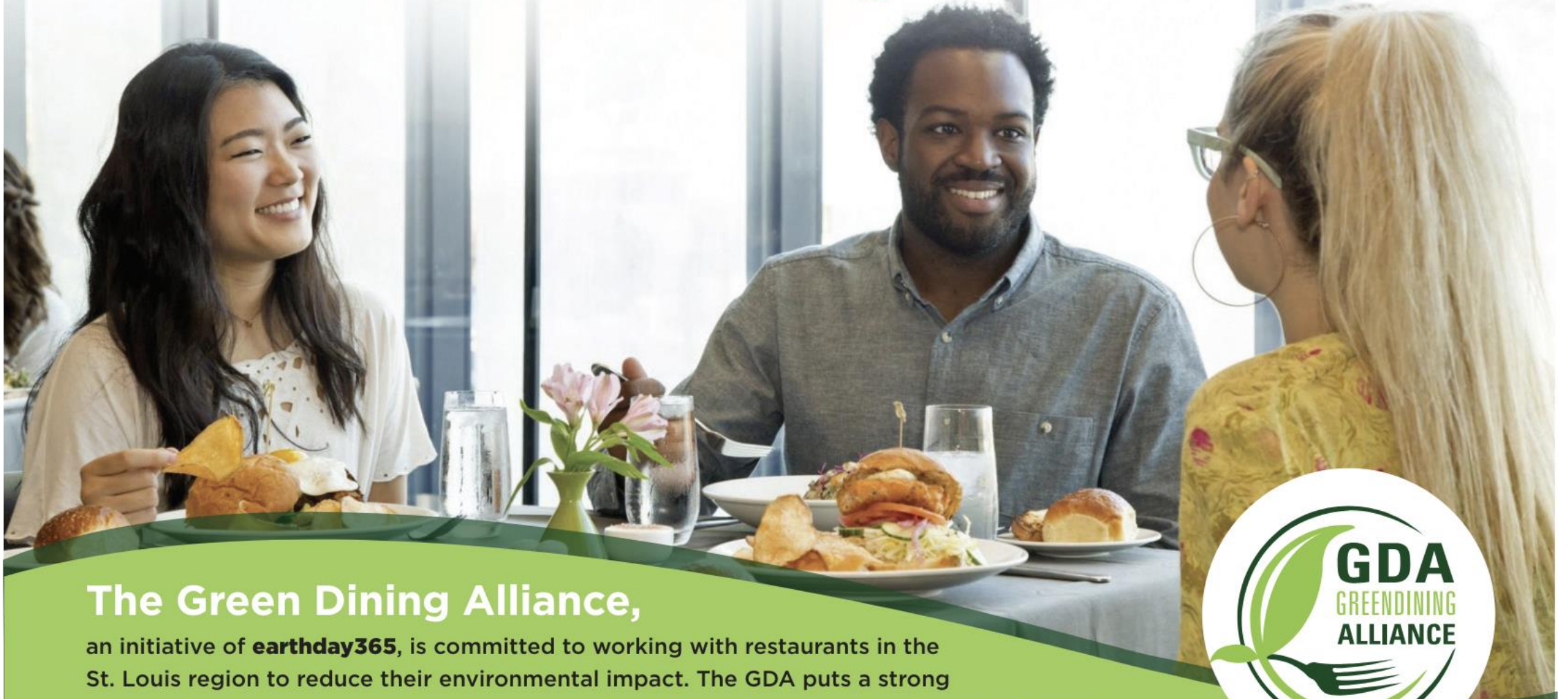
A Green Dining District in Clayton

Propose to start small and build on “wins”

- Begin in Demun (6 restaurants) - Kaldi's is a lapsed GDA member, Clementine's Ice Cream is GDA certified in Lafayette Square, and plant-based Seedz is likely a good fit
- Follow with Hanley/Wydown (6 restaurants) and Downtown (~43 restaurants) - Downtown GDA members include Avenue, Crushed Red, and Pastaria

Communication and marketing support in Clayton Connections and City Views.

Join the Green Dining Alliance



The Green Dining Alliance,

an initiative of **earthday365**, is committed to working with restaurants in the St. Louis region to reduce their environmental impact. The GDA puts a strong emphasis on reducing, recycling, and composting restaurant waste, operating facilities with energy efficiency, water conservation, education and awareness, and sourcing sustainable food, to-go ware, and cleaning supplies.



greendiningalliance.org

GDA CORE CONCEPTS

💡 Recycle 💡 Ban Styrofoam 💡 Phase in efficient lighting 💡 Set goals for waste reduction + diversion 💡 Share baseline data with GDA 💡 Train + educate staff about waste diversion



WHY JOIN THE GDA?

The Green Dining Alliance offers customized, easily implemented strategies to help minimize your environmental impact, meeting you where you are and guiding you along your sustainability journey with cost-effective solutions.

GET CERTIFIED IN 4 EASY STEPS!

- 1 Commit to the Core Concepts.
- 2 Schedule a GDA on-site evaluation.
- 3 Score at least 100 points on the GDA audit.
- 4 Pay membership fee (\$250/first year, \$200/subsequent years).

VALUE

Certification means validation: Our third-party certification program proves you are working towards a sustainable future.

Marketing: We promote your hard work to the community through *Sauce Magazine*, *Healthy Planet*, newsletters, and social media.

Tools & resources: We do the research to find the best products and services for the environment so you don't have to.

Financial assistance for sustainable practices: We help you access grant funding for composting and plastic waste reduction.

Consultation: The GDA provides an in-depth report with targeted strategies to help reduce your impact.

Education and networking: The GDA does training for staff and provides opportunities to network with like-minded businesses in St. Louis.



earthday365
4125 Humphrey St.
St. Louis, MO 63116

gillian@earthday-365.org
314.282.7533
greendiningalliance.org



@GreenDiningSTL

References:

Sengupta, Somini. "White House Announces Strategy to Keep Edible Food Out of Landfills." *The New York Times*, 12 June 2024, <https://www.nytimes.com/2024/06/12/climate/white-house-food-waste-strategy.html>. Accessed 21 June 2024.

Tabuchi, Hiroko. "'Garbage Lasagne': Dumps are a Big Driver of Warming, Study Says." *The New York Times*, 28 Mar. 2024, <https://www.nytimes.com/2024/03/28/climate/landfills-methane-emissions.html?smid=em-share>. Accessed 21 June 2024.

"The Friday Pages." *Webster Groves*, 15 Dec. 2023, <https://www.webstergrovesmo.gov/CivicSend/ViewMessage/Message/218955>. Accessed 21 June 2024.