



**CLAYTON
TOMORROW
2040**

Sustainability Advisory Committee *Comprehensive Plan Summary*

7/16/2024

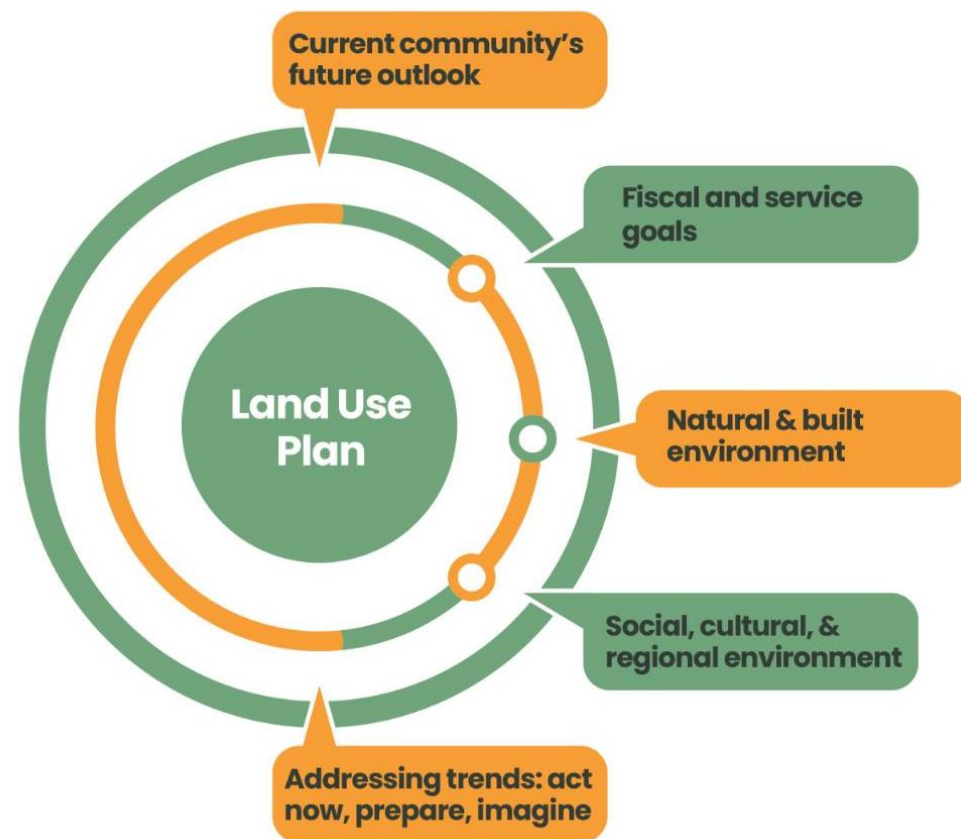




**CLAYTON
TOMORROW
2040**

Comprehensive Planning

- Document to guide/inform physical, social, and economic development and growth
- Sets a long-term vision for future land use and built environment
- Establishes the future land use map, a foundation of zoning
- Per Missouri statutes, our “city plan for the physical development of the municipality” and “the plan shall be made with the general purpose of guiding and accomplishing a coordinated development of the municipality which will, in accordance with existing and future needs, best promote the general welfare, as well as efficiency and economy in the process of development”

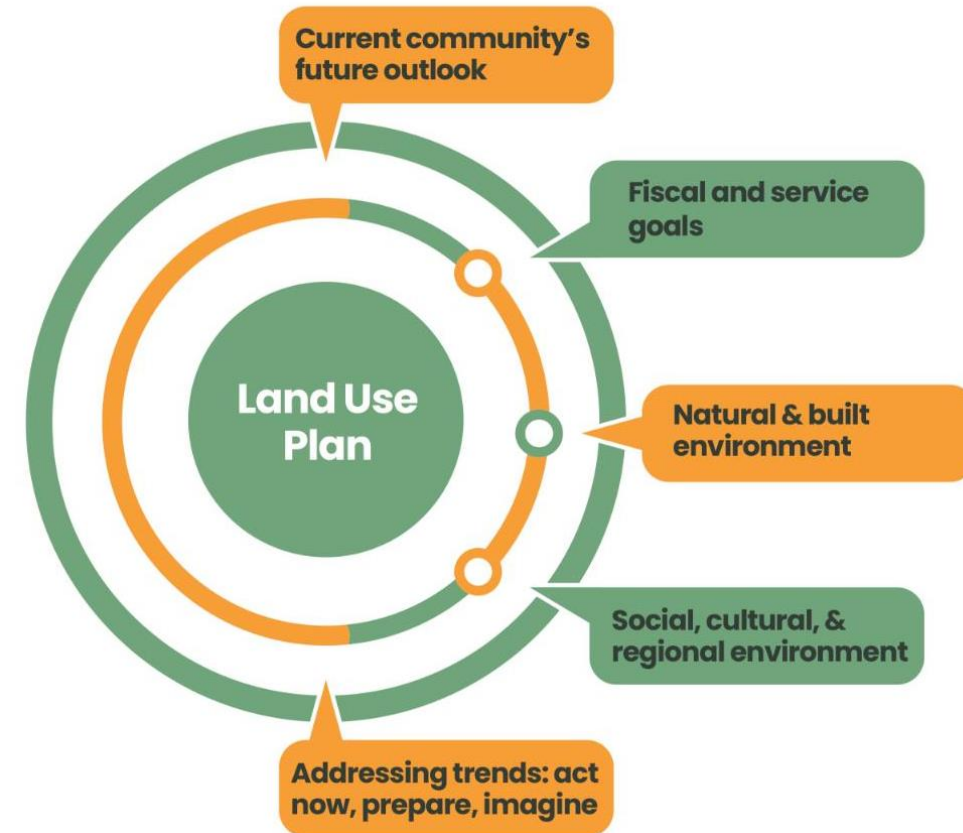




**CLAYTON
TOMORROW
2040**

Comprehensive Planning

- Directed actions and tasks
 - Mayor and BOA
 - Departments: City Manager, Planning & Development, Economic Development, Public Works
 - Commissions: PC-ARB
- Indirect actions or influence
 - Departments: Parks & Rec, Finance, Police, Fire
 - Commissions: PAAC, SAC, CEC, Parks & Rec, EDAC





2040 Vision

... Clayton is a vibrant, safe and welcoming community where everyone feels they belong.

... We prioritize pedestrian friendly infrastructure that connects neighborhoods, Downtown, schools, and parks.

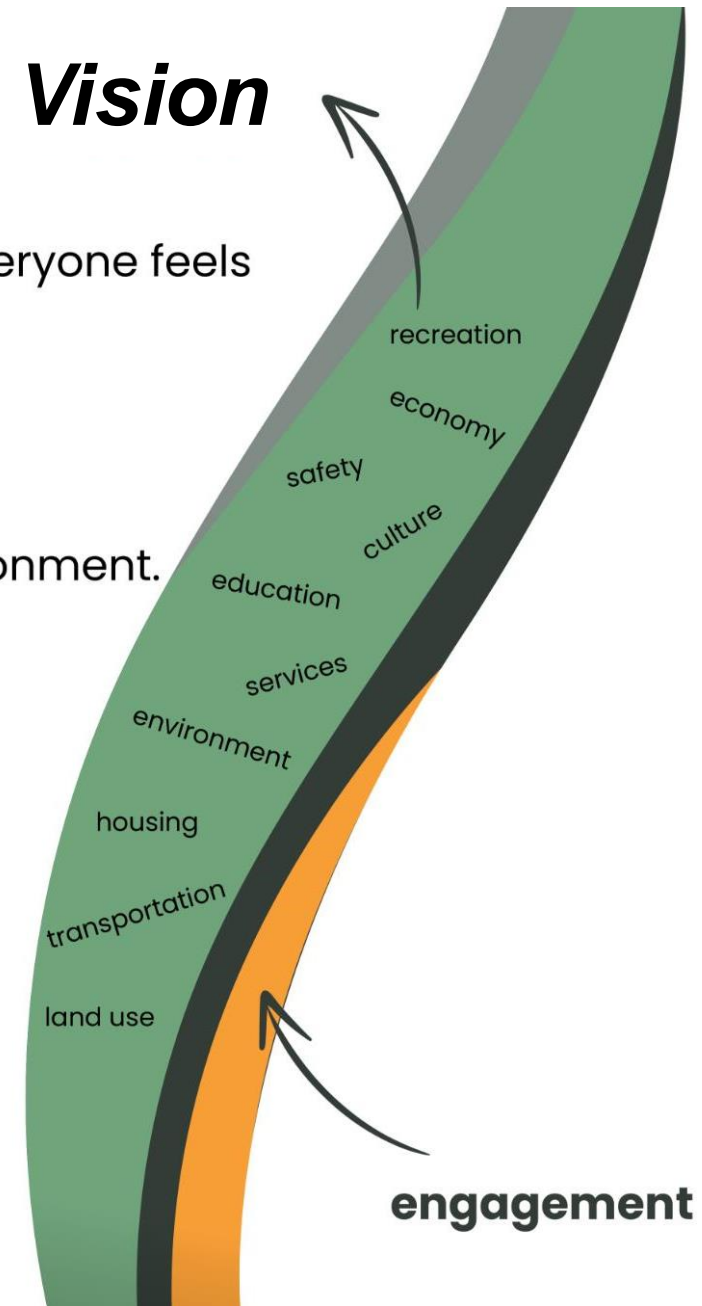
... Clayton is a steward of a sustainable future for a healthy environment.

... We champion an inclusive, resilient, and equitable economy.

... Our economic environment allows for the reliable provision of high-quality city services and benefits.

... Clayton takes pride in our neighborhoods, schools, businesses, and shared spaces.

... Our public events and community spaces reflect a rich diversity of culture and character.





**CLAYTON
TOMORROW
2040**

Board of Aldermen

- Annual
- Evaluate progress & priorities
- Update and adjust OKRs

Short-Term

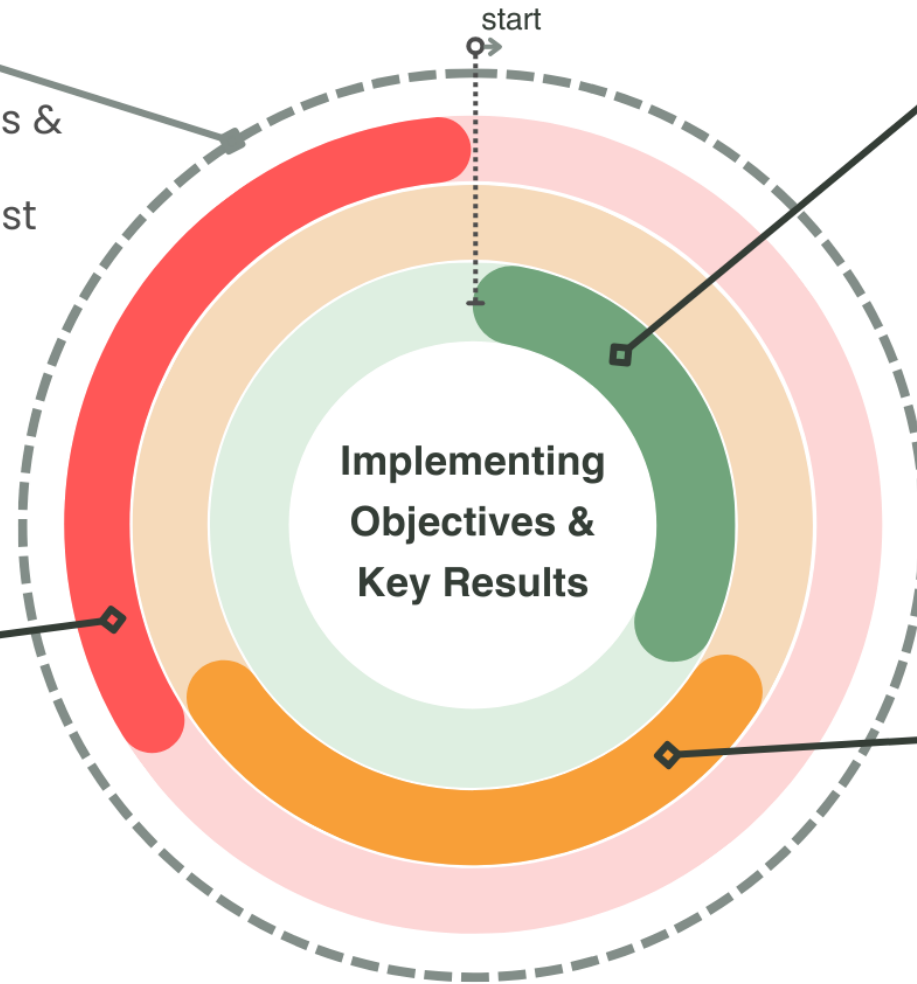
- 0-3 years
- High community priorities
- Quick implementation potential
- High impact to kick-start work

Long-Term

- 10+ years
- Continue building
- Additional studies & engagement

Mid-Term

- 4-10 years
- Build on short-term results
- Multi-departmental





**CLAYTON
TOMORROW
2040**

Implementation Matrix



Alignment with Vision

- Estimated impact on each of the 7 vision statements

Primary / max
Indirect



Impact/Focus

- BOA direction
- Area of impact
- Partner needs



Staff Time

- Staff time needed to complete each key result varies
- Some require coordination between multiple departments



Task Type

- Regulation, policy, guideline, or study
- Some could/should be addressed together to coordinate work or inform other result



Part of Code Re-Write

- Major element of the plan
- Many of the key results are direct steps of drafting the code and others will help inform new regulations



**CLAYTON
TOMORROW
2040**

Housing & Neighborhoods

4 Objectives and 18 Key Results

- Create infill development standards
- Address building preservation
- Prioritize greenspace and tree canopy
- Reduce lot coverage and stormwater runoff
- Include sustainable elements in public spaces



HOUSING & NEIGHBORHOODS Key Result	We are a vibrant, safe, and welcoming community where everyone feels they belong.	We prioritize a pedestrian-friendly infrastructure connecting neighborhoods, Downtown, schools, and parks.	We are stewards of a sustainable future for a healthy environment.	We champion an inclusive, resilient, and equitable economy.	Our economic environment allows for the reliable provisions of high-quality city services and benefits.	We take pride in our neighborhoods, schools, businesses, and shared spaces.	Our public events and community spaces reflect a rich diversity of culture and character.	T i m e l i n e	Leader	Partner
2.2 Establish appropriate infill development standards for building form and materials.									PDS	PC-ARB
2.3 Develop a preservation guide to support additional investment and protection of existing buildings that provide moderate rent options and consider ways to preserve existing affordable housing stock by incentivizing investment in historic buildings.									PDS, ED	PC-ARB, MO STATE, BOA
3.1 Prioritize greenspace, trees, and sustainability in residential neighborhoods to retain existing character.									PDS	SAC, PW
3.2 Develop a coverage reduction program that identifies innovative ways to reduce the amount of impervious coverage and promotes green infrastructure.									PDS	SAC, PC-ARB, BOA
3.3 Review the tree and landscape regulations to further protect and enhance the existing neighborhood tree canopy, especially during construction activities.									PDS	SAC, PW
3.4 Prioritize rain gardens, native plants, and other sustainable elements in our public spaces.									PDS, PW, PR	SAC, PRC, BOA



Commercial Development & the Economy

6 Objectives and 25 Key Results

- Promote active transportation
- Greenspace and plaza designs
- PUD points



<p>COMMERCIAL DEVELOPMENT & ECONOMY</p> <p>Key Result</p>	<p>We are a vibrant, safe, and welcoming community where everyone feels they belong.</p>	<p>We prioritize a pedestrian-friendly infrastructure connecting neighborhoods, Downtown, schools, and parks.</p>	<p>We are stewards of a sustainable future for a healthy environment.</p>	<p>We champion an inclusive, resilient, and equitable economy.</p>	<p>Our economic environment allows for the reliable provisions of high-quality city services and benefits.</p>	<p>We take pride in our neighborhoods, schools, businesses, and shared spaces.</p>	<p>Our public events and community spaces reflect a rich diversity of culture and character.</p>	<p>T i m e l i n e</p>	<p>Leader</p>	<p>Partner</p>
<p>5.1 Update the City's zoning code to reflect the unique identity of each commercial area of the community.</p>									<p>PDS</p>	<p>ED, PC-ARB</p>
<p>6.3 Participate in national PARKing Day or similar annual initiative to celebrate activation of public spaces with temporary activities.</p>									<p>PDS, PW</p>	<p>ED</p>
<p>8.1 Where possible, look to create pedestrian connections and cut through paths in neighborhoods to improve connectivity.</p>									<p>PW, PDS</p>	<p>BOA</p>
<p>9.1 Encourage publicly available open space as part of new commercial developments in Downtown, either through updating setback and building coverage requirements or allowing public use of private greenspace.</p>									<p>PDS</p>	<p>ED, PC, BOA</p>
<p>9.5 Prioritize roadways in Downtown for different modes of transportation.</p>									<p>PW</p>	<p>STLCO, PDS</p>
<p>10.5 Review PUD public benefits points system to identify opportunities for better alignment with City objectives.</p>									<p>PDS</p>	<p>CM, PC, BOA</p>



CLAYTON
TOMORROW
2040

Transportation & Connectivity

3 Objectives and 14 Key Results

- Coordinate with Livable Community Master Plan
- Prioritize wider sidewalks in key areas
- Revise bicycle parking regulations
- Prepare for new and emerging transportation technology



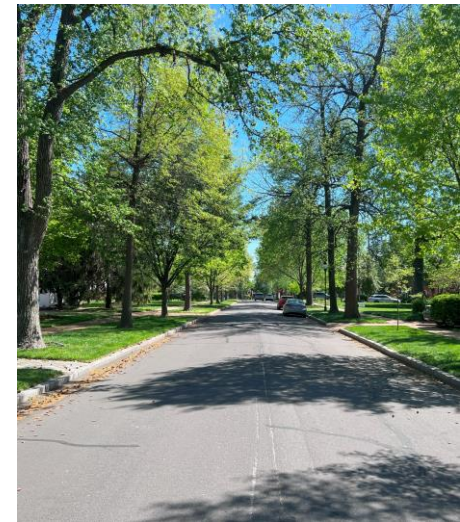
TRANSPORTATION & CONNECTIVITY Key Result	We are a vibrant, safe, and welcoming community where everyone feels they belong.	We prioritize a pedestrian-friendly infrastructure connecting neighborhoods, Downtown, schools, and parks.	We are stewards of a sustainable future for a healthy environment.	We champion an inclusive, resilient, and equitable economy.	Our economic environment allows for the reliable provisions of high-quality city services and benefits.	We take pride in our neighborhoods, schools, businesses, and shared spaces.	Our public events and community spaces reflect a rich diversity of culture and character.	Timeline	Leader	Partner
11.1 Encourage redevelopment and reuse in the Forsyth Gateway area adjacent to the MetroLink Station.									PDS, ED	BOA
12.1 Coordinate with the Livable Community Master Plan to identify priority areas for widening sidewalks to allow for safe pedestrian access as well as outdoor dining and additional greenspace in place of on-street parking.									PDS, PW	CM
12.4 Prioritize wide sidewalks and open plazas in key areas through development requirements or as a public benefit item under a PUD.									PDS	PW, PC, BOA
13.1 Support implementation of the bike network and pedestrian improvements recommended by the Livable Community Plan through changes to land use and development patterns in Clayton.									PW, PR	PDS, GRG, TRAILNET, CM
13.2 Ensure Clayton is prepared for new and emerging transportation technologies.									PW, PDS	BOA, ALL DEPTS
13.3 Revise bicycle parking requirements for specific areas to coordinate private bicycle infrastructure investment with recommendations from the Livable Community Master Plan.									PDS	PW
13.4 Investigate opportunities to offer supportive infrastructure to encourage more sustainable forms of transportation.									PW	PDS
13.7 Reinforce active transportation goals of the Livable Community Plan with modifications to the City's Land Use Codes for layout, parking, and access regulations on private property.									PDS	PW, ED



Community Character

4 Objectives and 14 Key Results

- Lead regional cooperation
- Encourage energy efficient technology
- Public guidelines and recommendations for green practices
- Develop climate resilience action plan
- Partner with MSD on stormwater management



<p style="text-align: center;">COMMUNITY CHARACTER</p> <p style="text-align: center;">Key Result</p>	<p style="text-align: center;">We are a vibrant, safe, and welcoming community where everyone feels they belong.</p>	<p style="text-align: center;">We prioritize a pedestrian-friendly infrastructure connecting neighborhoods, Downtown, schools, and parks.</p>	<p style="text-align: center;">We are stewards of a sustainable future for a healthy environment.</p>	<p style="text-align: center;">We champion an inclusive, resilient, and equitable economy.</p>	<p style="text-align: center;">Our economic environment allows for the reliable provisions of high-quality city services and benefits.</p>	<p style="text-align: center;">We take pride in our neighborhoods, schools, businesses, and shared spaces.</p>	<p style="text-align: center;">Our public events and community spaces reflect a rich diversity of culture and character.</p>	<p style="text-align: center;">T i m e l i n e</p>	<p style="text-align: center;">Leader</p>	<p style="text-align: center;">Partner</p>
<p>14.3 Lead the way on regional cooperation by ensuring commission, Board of Aldermen, and others are in regular communication with adjacent municipalities.</p>									CM, BOA, M	Commissions & Depts
<p>15.2 Ensure Clayton has a strong identity that is reflected in the built environment.</p>									PDS	CCF
<p>16.1 Participate in research and economic development opportunities with local colleges and universities.</p>									CM	All Depts, WashU, Concordia
<p>17.1 Remove barriers to rehabilitation and modification of existing structures with energy efficient technology.</p>									PDS	SAC
<p>17.2 Publish guidelines and regularly share resources/data related to sustainability and green infrastructure.</p>									Communications	SAC, PDS, PW
<p>17.3 Develop a climate resilience action plan for Clayton based on the regional sustainability plans completed to date.</p>									PDS, PW	SAC, BOA, CM
<p>17.4 Develop a partnership with the Metropolitan Sewer District to coordinate updates to stormwater management regulations and proactive approaches to regional watershed management.</p>									PW	SAC, MSD



**CLAYTON
TOMORROW
2040**

Sustainability Implementation Summary

SAC

- Review and advise on code changes
- Guide and contribute to research and ideas
- Strategic planning initiatives

Short-Term

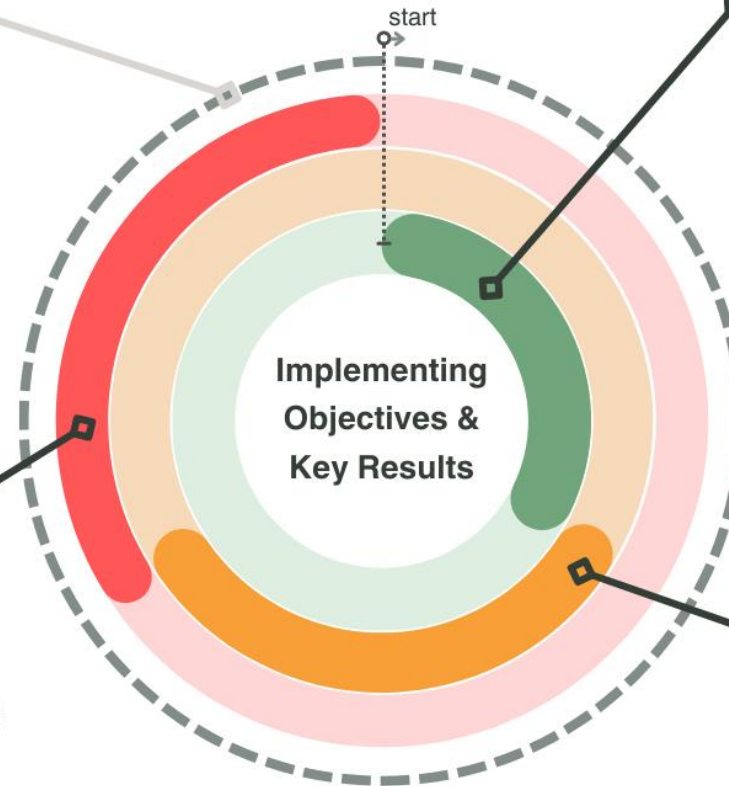
- Initial code revisions and policy updates
- Activity and event support

Long-Term

- Zoning and building codes
- Climate Action Plan
- Preparedness planning

Mid-Term

- New regulations
- Data and progress tracking
- Partnerships





**CLAYTON
TOMORROW
2040**

